

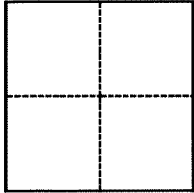
CORNER RECORD

Agency Index

Bk 143 PG 8

Document Number

CR 15034

City of OAKLAND County of ALAMEDA, CaliforniaBrief Legal Description MON IN MON WELL STAMPED EAR-KAIS EC IN EARHART RD. PER RS 1546**CORNER TYPE****COORDINATES (Optional)**

- ☐ Government Corner ☐ Control
☐ Meander ☒ Property
☐ Rancho ☐ Other

Date of Survey February 3, 2021

N. _____ E. _____

Elevation _____

Units ☐ Metric ☒ U.S. Survey Foot

Horizontal Datum _____

Zone _____ Epoch Date _____

Vertical Datum _____

☒ Complies with Public Resources Code §§8801-8819☐ Complies with Public Resources Code §§8890-8902PLS Act Ref.: ☐ 8765(d) ☒ 8771 ☐ 8773 ☐ Other:

Corner/
Monument: ☒ Left as found ☐ Established ☐ Rebuilt ☒ Pre-Construction
☐ Found and tagged ☐ Reestablished ☒ Referenced ☐ Post-Construction

Narrative of corner identified and monument as found, set, reset, replaced, or removed:

☒ See sheet #2 for description(s):

FOUND A 3-1/4" BRASS DISK STAMPED "EAR-KAIS EC" IN A MONUMENT WELL PER RECORD OF SURVEY 1546 FILED IN BOOK 22 OF MAPS AT PAGES 71-75, ALAMEDA COUNTY RECORDS. MONUMENTATION WAS SET AND TIED TO AID IN FUTURE REESTABLISHMENT SHOULD THIS MONUMENT BE DISTURBED DUE TO FUTURE CONSTRUCTION ACTIVITIES.

SURVEYOR'S STATEMENT

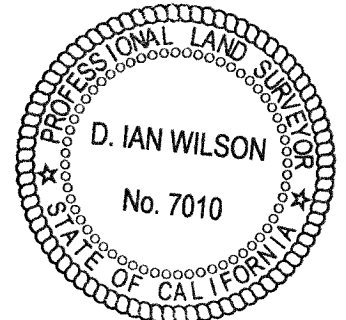
This Corner Record was prepared by me or under my direction in conformance with

the Professional Land Surveyors' Act on February 4, 2021Signed [Signature] P.L.S. or R.C.E. No. 9179**COUNTY SURVEYOR'S STATEMENT**

This Corner Record was received _____

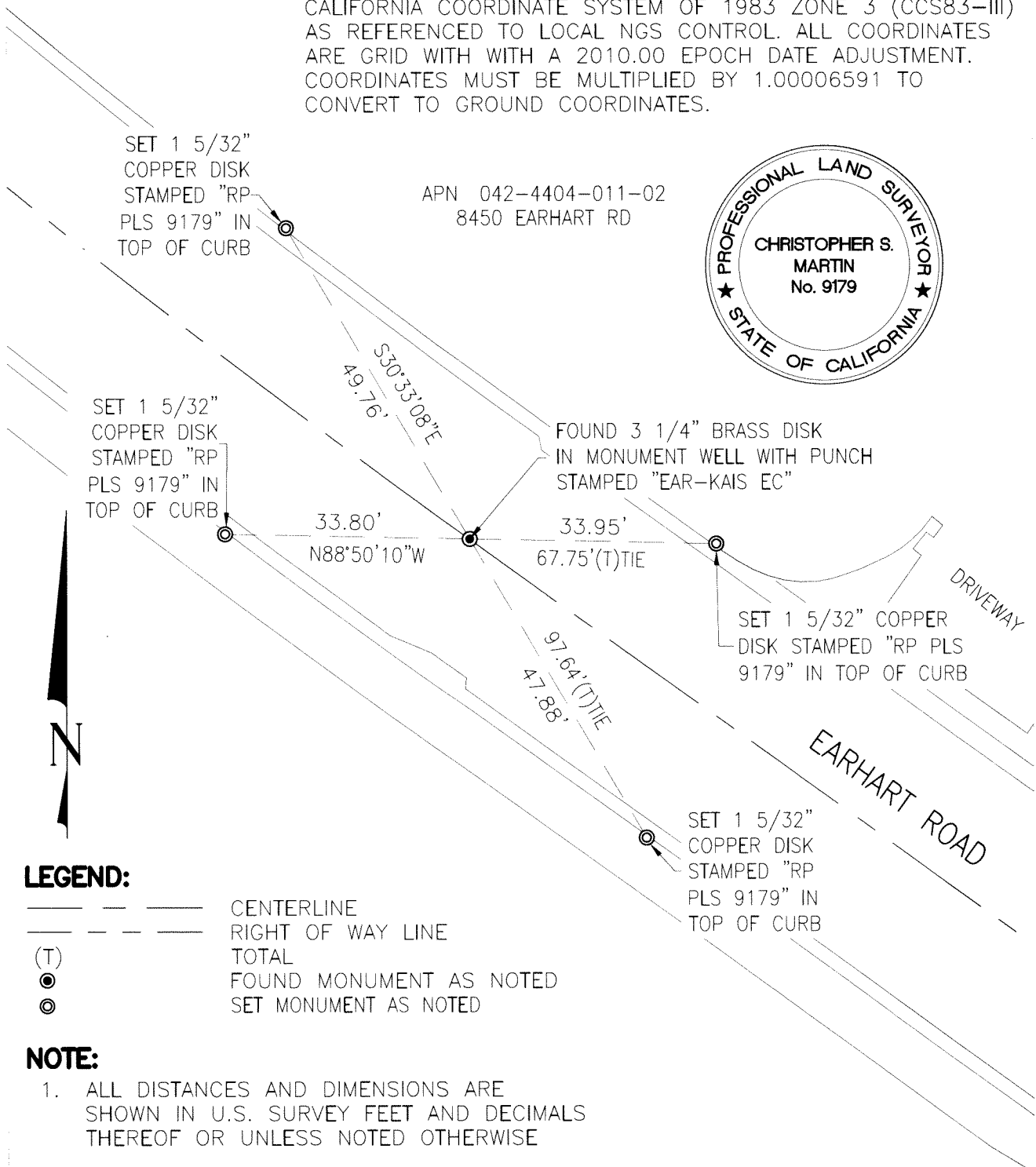
and examined and filed 12/6/2021Signed [Signature] P.L.S. or R.C.E. No. 7010Title ALAMEDA COUNTY SURVEYOR

County Surveyor's Comment _____



BASIS OF BEARINGS:

BEARINGS AND DISTANCES SHOWN ARE BASED ON THE NORTH AMERICAN DATUM OF 1983 (NAD83) CONVERTED TO THE CALIFORNIA COORDINATE SYSTEM OF 1983 ZONE 3 (CCS83-III) AS REFERENCED TO LOCAL NGS CONTROL. ALL COORDINATES ARE GRID WITH A 2010.00 EPOCH DATE ADJUSTMENT. COORDINATES MUST BE MULTIPLIED BY 1.00006591 TO CONVERT TO GROUND COORDINATES.



0 10' 20'

SCALE IN FEET (1"=20')

R.E.Y. ENGINEERS, INC.

Civil Engineers | Land Surveyors | LiDAR
5673 WEST LAS POSITAS BOULEVARD
PLEASANTON, CA 94588
Phone: (408) 219-3236

