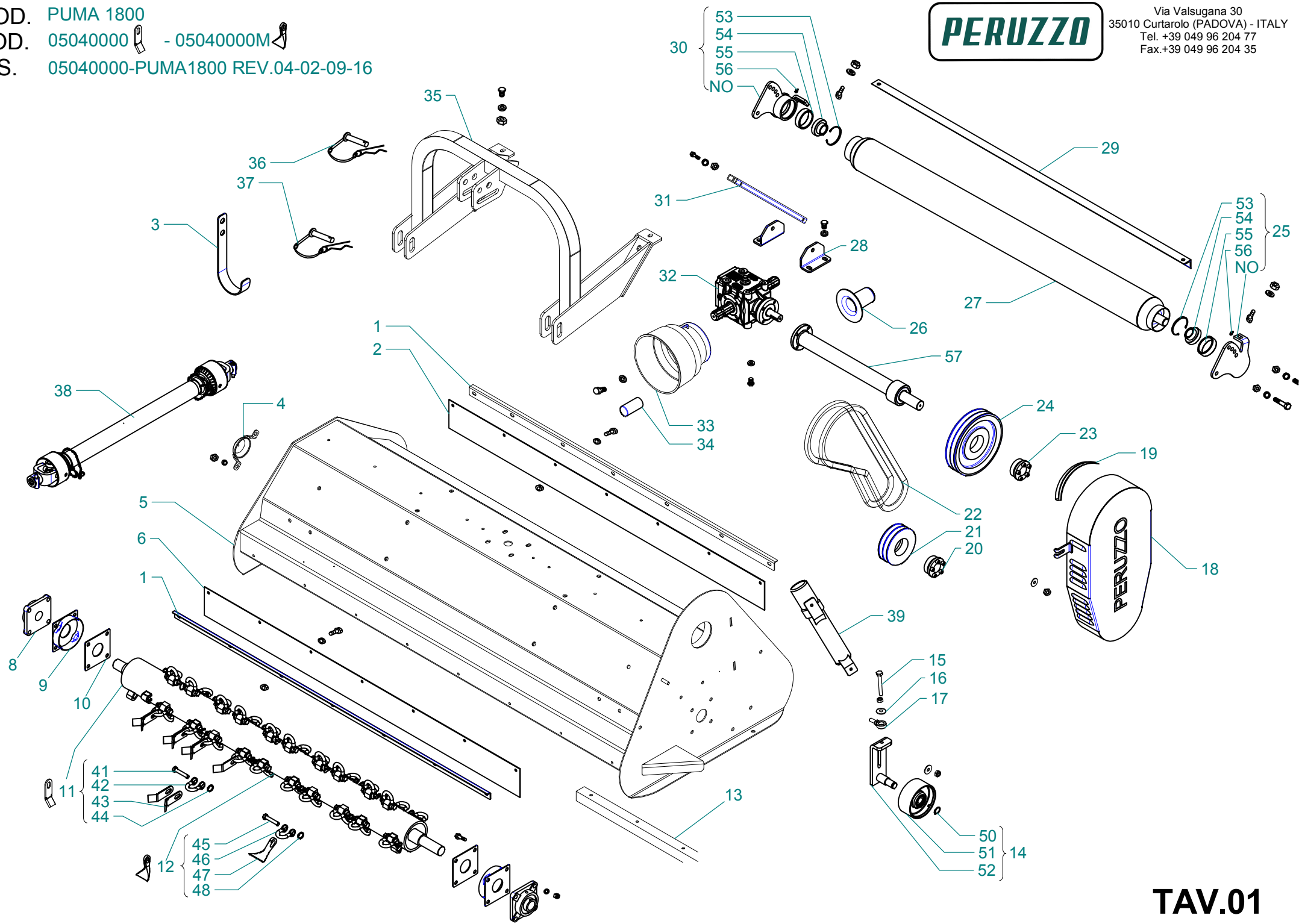


MOD. PUMA 1800
COD. 05040000 - 05040000M
DIS. 05040000-PUMA1800 REV.04-02-09-16



Via Valsugana 30
35010 Curtarolo (PADOVA) - ITALY
Tel. +39 049 96 204 77
Fax.+39 049 96 204 35



MOD. PUMA 1800
COD. 05040000 - 05040000M
DIS. 05040000-PUMA1800 REV.04-02-09-16



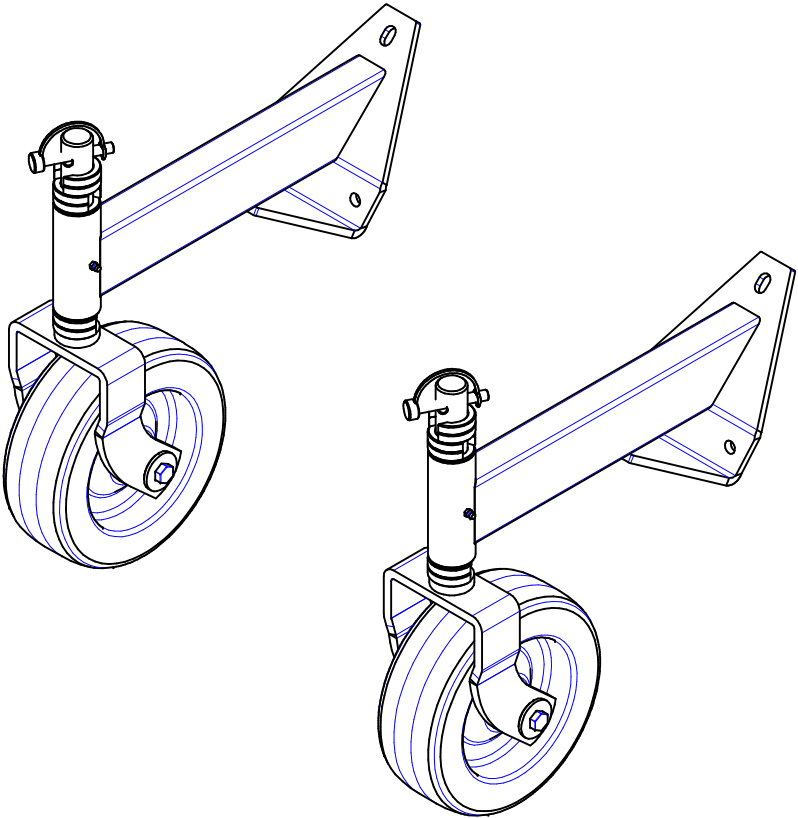
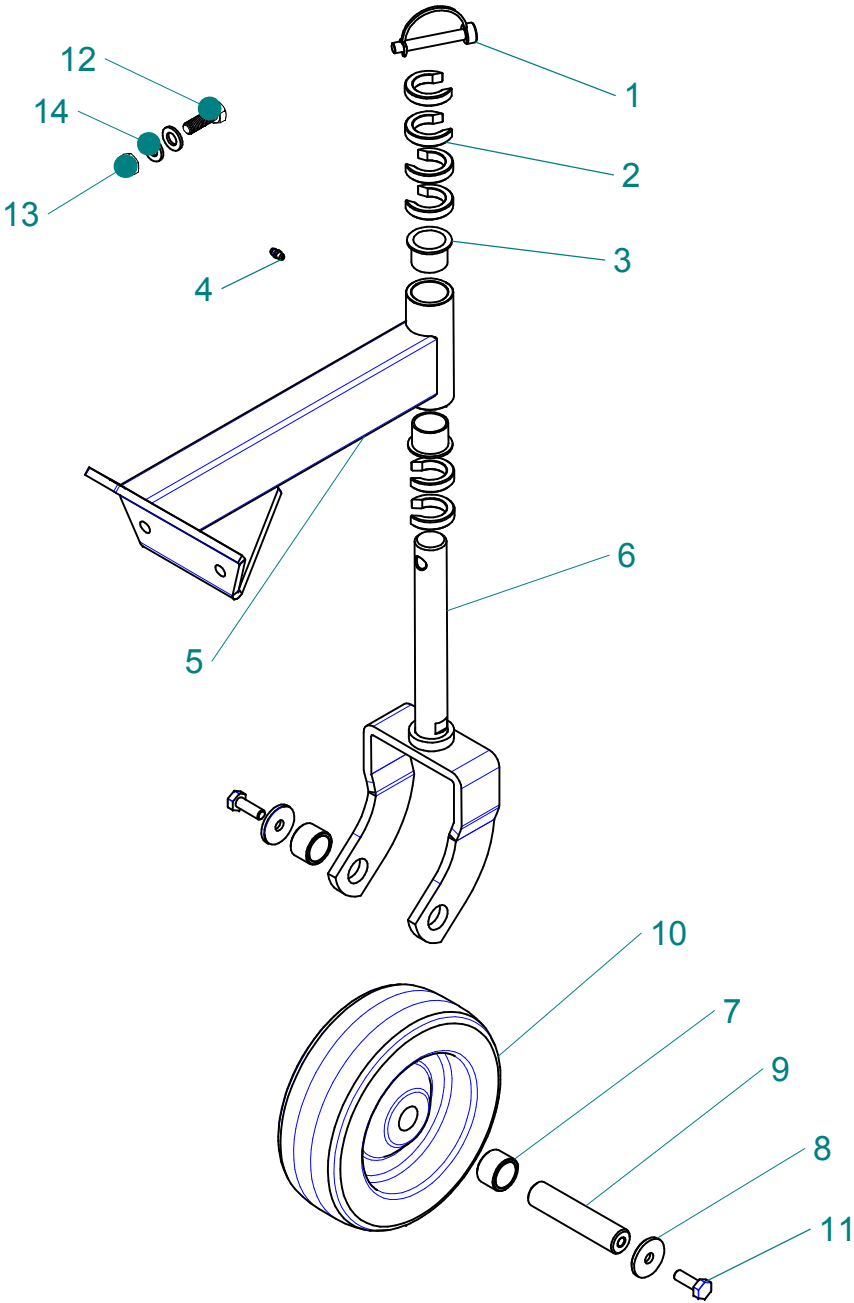
Via Valsugana 30
35010 Curtarolo (PADOVA) - ITALY
Tel. +39 049 96 204 77
Fax.+39 049 96 204 35

POS.	CODE	N°P.	DESCRIZIONE (IT)	DESIGNATION (FR)	DESCRIPTION (GB)
1	05040016	2	PROFILATO PREMIGOMMA PUMA 1800 ZINCATO	SUPPORT BAVETTE	STONE GUARD HOLDER
2	05040792	1	PARASASSI IN GOMMA PER PUMA 1800	BAVETTE PROTECTION	STONE GUARD
3	07040301	1	SUPPORTO CARDANO VERSIONE PICCOLA ZINCAT	SUPPORT CARDAN	PTO SHAFT HOLDER
4	01306515	1	PROTEZIONE PER ALBERO D=35 ZINCATO	PROTECTION ROTOR	FLAIL SHAFT GUARD
5	05041603	1	SCocca PUMA 1800 VERNICIATA	CHASSIS	MAIN FRAME
6	05040793	1	GOMMA PROTEZ.ANT 1800 NORMAL/160/2COP	BAVETTE PROTECTION	STONE GUARD
8	32030107	2	SUPPORTO UCF 207-35	PALIER	PILLOW BLOCK
9	05050520	2	SCHERMO ALBERO ROTORE PER ALB.D=114	PROTECTION ROTOR	FLAIL SHAFT GUARD
10	05010575	1	SPESSORE ESTERNO PER MOZZO D.35 ZINCATO	BRIDE MOYEU	HUB SPACER
11	05040512	1	ALBERO COMPLETO PUMA 1800 COLTELLI	ROTOR COMPLET FLEAUX-PALETTE	FLAIL SHAFT w/paddle flails
12	05040515	1	ALBERO 1800 COMPLETO MAZZETTE	ROTOR COMPLET FLEAUX ROBUSTES	FLAIL SHAFT w/heavy duty flails
13	05041165	1	ANGOLARE DI ROTT.PUMA1800 40X40 ZINCATO	CONTRE-LAME	COUNTERBLADE
14	03030578	1	ASSIEME GALOPPINO PER 3 CINGHIE B H=70	ENSEMBLE TENDEUR POULIE	BELT TIGHTENING ASSEMBLY
15	51019230	1	VITE T.E. M 10X80 TUTTO FIL. ZN UNI5739	VIS	SCREW
16	51230040	1	RONDELLA FASC.LARGA 11X30X2,5 ZINCATA	RONDELLE	WASHER
17	05015520	1	VITE M10 CON ANELLO PER GALOPPINO	VIS	SCREW
18	05020800	1	CARTER PUMA VERNICIATO	CARTER COURROIES	BELT GUARD
19	27001021	1	GUARNIZIONE A PROFILO "U" COD. 20/95	GARNITURE	GASKET
20	32040025	1	CALETTATORE VK 156/RCK 15 35X65	MOYEU POULIE	TAPER LOCK
21	31038093	1	PULEGGE Dp.=150 3 gole SPB foro 65	POULIE	PULLEY
22	36010299	3	CINGHIA TRAPEZ. BX 50	COURROIE	BELT
23	32040045	1	CALETTATORE VK 156/RCK 15 40X80	MOYEU POULIE	TAPER LOCK
24	31038099	1	PULEGGE Dp.=225 3 gole B f 80	POULIE	PULLEY
25	05020571	1	STAFFA PORTA RULLO SX PUMA CON CUSCINETT	SUPPORT ROULEAU GAUCHE	LH ROLLER BRACKET
26	03269203	1	PROTEZIONE ALBERO	PROTECTION ARBRE CANNELE	SPLINED SHAFT CAP
27	05040511	1	RULLO ELK/PUMA 1800 D=121,1 VERNICIATO	ROULEAU	ROLLER
28	05041030	2	PIASTRA ANCOR. 3°PUNTO PUMA1800 ZINCATO	SUPPORT	SUPPORT
29	05040040	1	RASCHIARULLO PUMA 1800 ZINCATO	RACLEUR	SCRAPER
30	05020576	1	STAFFA PORTA RULLO DX PUMA CON CUSCINETT	SUPPORT ROULEAU DROIT	RH ROLLER BRACKET
31	05030507	1	TUBO TIRANTE 40X20X3 PUMA/TEG ZINCATO	TENDEUR	TIGHTENER
32	32050172	1	MOLTIPLICATORE	BOITIER RENVOI D'ANGLE	GEARBOX
33	03030560	1	CUFFIA PROT.CARD.D150/225X190 43/331 NER	PROTECTION PDF	PTO GUARD
34	03030565	1	PROTEZIONE ALBERO SCANALATO	PROTECTION ARBRE CANNELE	SPLINED SHAFT CAP
35	05020505	1	ARCO ATT. 3°P. PUMA 1600/1800	ARC ATTELAGE 3 POINTS	3 POINT LINKAGE ARCH
36	03091236	1	PERNO 3°PUNTO D=19X130 CON MANIGLIA	BROCHE 3eme POINT	UPPER LINK PIN
37	03091237	2	PERNO 3°PUNTO D=22X130 CON MANIGLIA	BROCHE 3eme POINT	UPPER LINK PIN
38	35703023	1	CARDANO B4N"CE" CON RL 1"3/8 1000	CARDAN	PTO SHAFT
39	39100392	1	PORTADOCUMENTI 317x72 COD.AB/101	PORTE-DOCUMENTS	DOCUMENT HOLDER
41	05020035	58	SPINA TE 17 BASSA D=11X60 NO FILET.	BROCHE	PIN
42	05050125	58	GRILLO A=41 B=25 FORO=11.5 D=26	MANILLE	HOOK
43	05010068	116	COLTELLO A "Y" FINITO MARC. PERUZZO	FLEAU Y	Y - FLAIL
44	05010100	58	MOLLA IN ACC.INOX PER VITE FORATA	RESSORT	SPRING
45	05020035	58	SPINA TE 17 BASSA D=11X60 NO FILET.	BROCHE	PIN
46	05050125	58	GRILLO A=41 B=25 FORO=11.5 D=26	MANILLE	HOOK
47	05030031	58	MAZZETTA PER TRINCIAERBA CON ASOLA 26X13	FLEAU ROBUSTE AVEC TROU	HEAVY DUTY FLAIL
48	05010100	58	MOLLA IN ACC.INOX PER VITE FORATA	RESSORT	SPRING
50	51175020	1	ANELLO SEEGBER 20 E DIN 471	CIRCLIP	CIRCLIP
51	05010583	1	PULEGGIA GALOPPINO PER 3 CINGHIE H=70	POULIE TENDEUR	BELT TIGHTENING PULLEY
52	03030573	1	STAFFA GALOP.FOX-PUMA-PANTHER-GF-SCORP.	SUPPORT	BRACKET
53	51180070	2	ANELLO SEEGBER 70 I C70 DIN 472	CIRCLIP	CIRCLIP
54	32010011	2	CUSCINETTO SB206 d=30 SENZA BATTUTA	ROULEMENT	BEARING
55	05020516	2	BOCCOLA PORTACUSCINET. UC 206 in plastica	BAGUE ROULEMENT	BEARING BUSH
56	51225025	2	INGRASSATORE M 6 DIRITTO	GRAISSEUR	GREASE NIPPLE
57	32051222	1	PROLUNGA	EXTENSION	EXTENSION

MOD. PUMA 1800
COD. 05040000 - 05040000M
DIS. 05040000-PUMA1800 REV.04-02-09-16

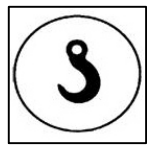
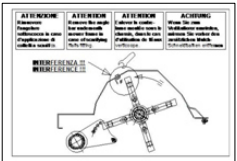


Via Valsugana 30
35010 Curtarolo (PADOVA) - ITALY
Tel. +39 049 96 204 77
Fax.+39 049 96 204 35

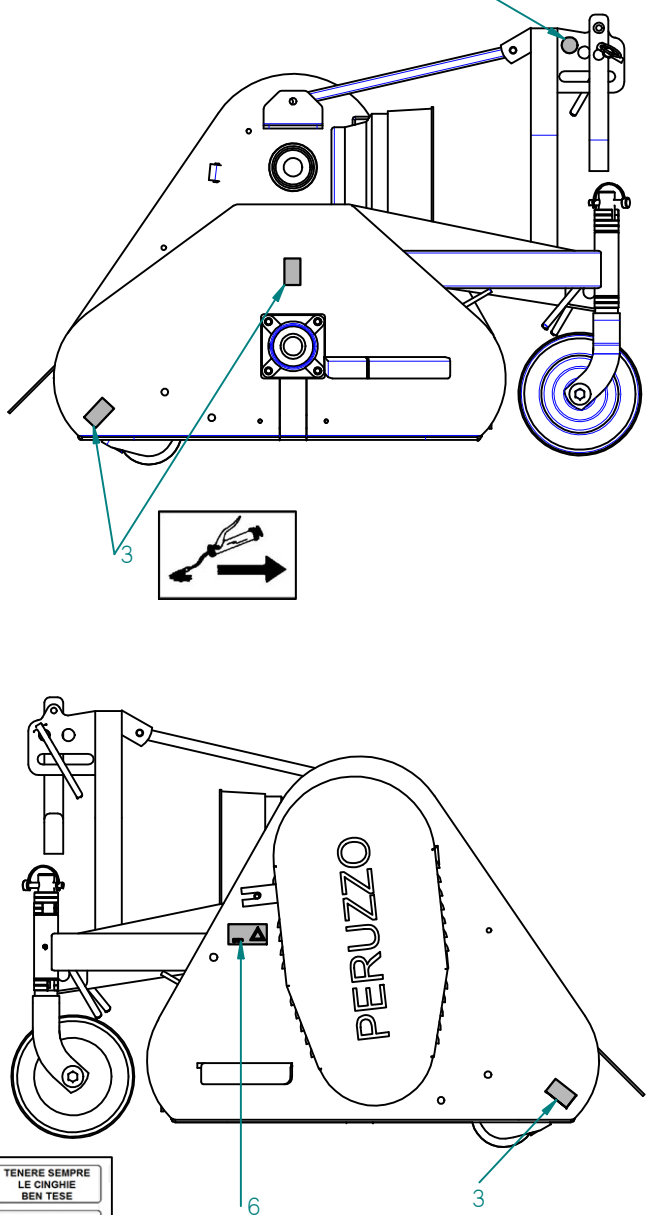
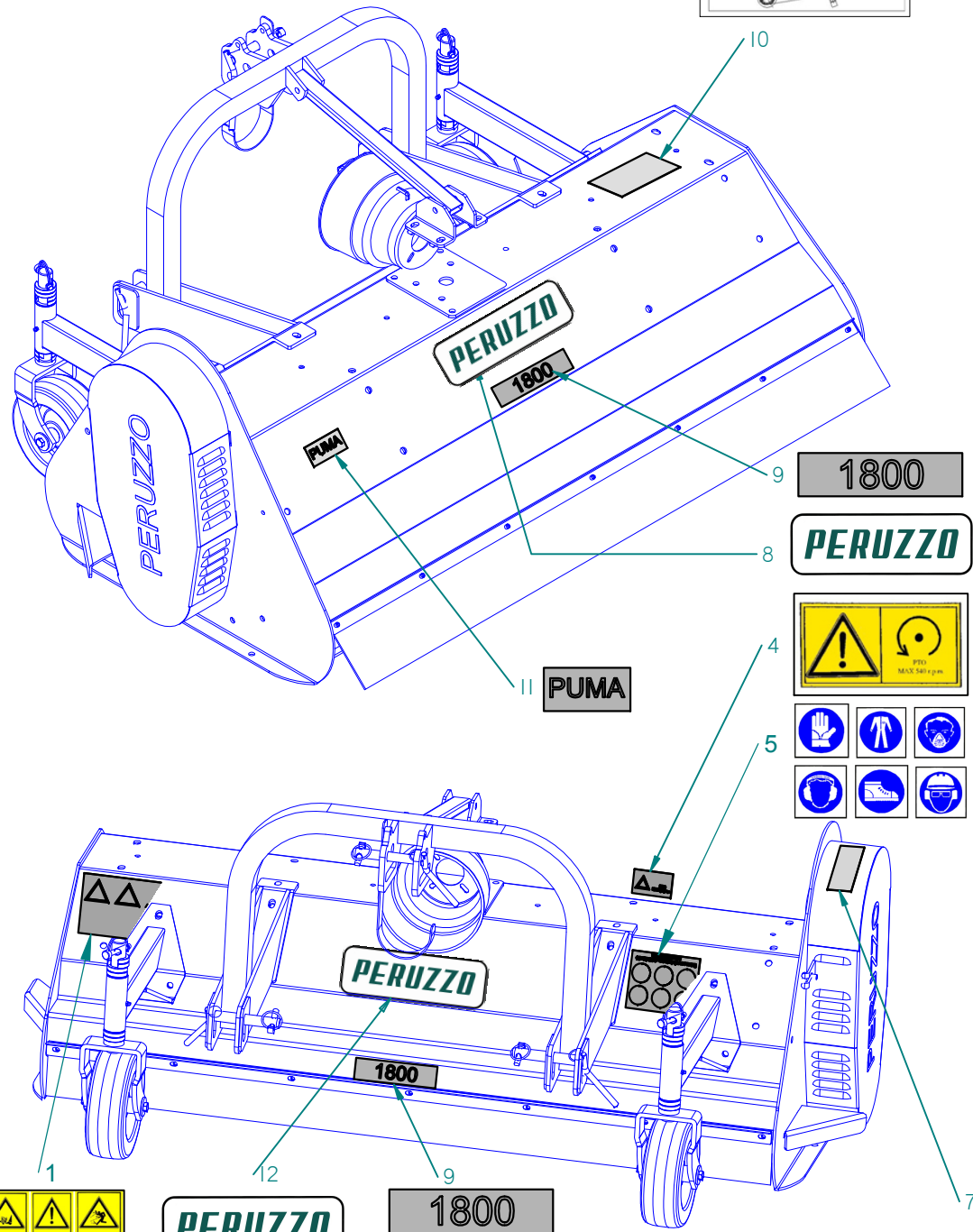


		COD 05030500			
POS.	CODE	N°P.	DESCRIZIONE (IT)	DESIGNATION (FR)	DESCRIPTION (GB)
1	51220041	2	SPINOTTO D=10 L=80 ART.01370	GOUPILLE	SPLIT PIN
2	05050541	12	DISTANZIALE RUOTA APERTO H10 D=30 ZINCAT	ENTRETOISE	SPACER
3	00009640	4	BOCCOLA FLANGIATA 30x34x26 FL42 BRONZO	DOUILLE	BUSH
4	51225025	2	INGRASSATORE M 6 DIRITTO	GRAISSEUR	GREASE NIPPLE
5	05032040	2	BRACCIO PORTARUOTE PUMA	BRAS SUPPORT DE ROUE	WHEEL ARM
6	05010535	2	FORCELLA RUOTE D=30 PUMA/PANTHER ZINCATA	CHAPE	WHEEL FORK
7	05010595	4	DISTANZIALE MOZZO RUOTA PERNO 25 ZINCATO	ENTRETOISE ESSIEU	WHEEL AXLE SPACER
8	51230032	4	ROSETTA D=40 SP 4 FORO D=11 A DISEGNO	RONDELLE	WASHER
9	05010590	2	PERNO ASSE RUOTA GARDEN PANTHER - KOALA	AXE DE ROUE	WHEEL AXLE SPACER
10	27020039	2	RUOTA 9X3.50-4/SMOOTH CUSC.25	ROUE	WHEEL
11	51010207	4	VITE T.E. M 10X30 UNI 5739-65 ZN	VIS	SCREW
12	51010260	6	VITE T.E. M 12X35	VIS	SCREW
13	51105035	6	DADO AUTOBLOC M 12 basso DIN985 IN NYLON	ECROU	NUT
14	51130035	12	RONDELLA PIANA M12 ZN UNI 6592	RONDELLE	WASHER

MOD. PUMA 1800
COD. 05040000 - 05040000M
DIS. 05040000-PUMA1800 REV.04-02-09-16



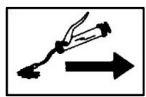
Via Valsugana 30
35010 Curtarolo (PADOVA) - ITALY
Tel. +39 049 96 204 77
Fax +39 049 96 204 35



KIT DECALCHI PUMA 1800		
POS	CODICE	Q
1	29005500	1
2	29905905	2
3	29005196	3
4	29005008	1
5	29005222	1
6	29005650	1
7	29005192	1
8	29005018	1
9	29005037	2
10	29005361	1
11	29005047	1
12	29005011	1



TENERE SEMPRE
LE CINGHIE
BEN TENSE
KEEP BELTS
WELL TIGHT
TENIR TOUJOURS
LES COURROIES
BIEN TENDUES
Keilriemen immer
auf guter
Spannung halten!



TAV.05