

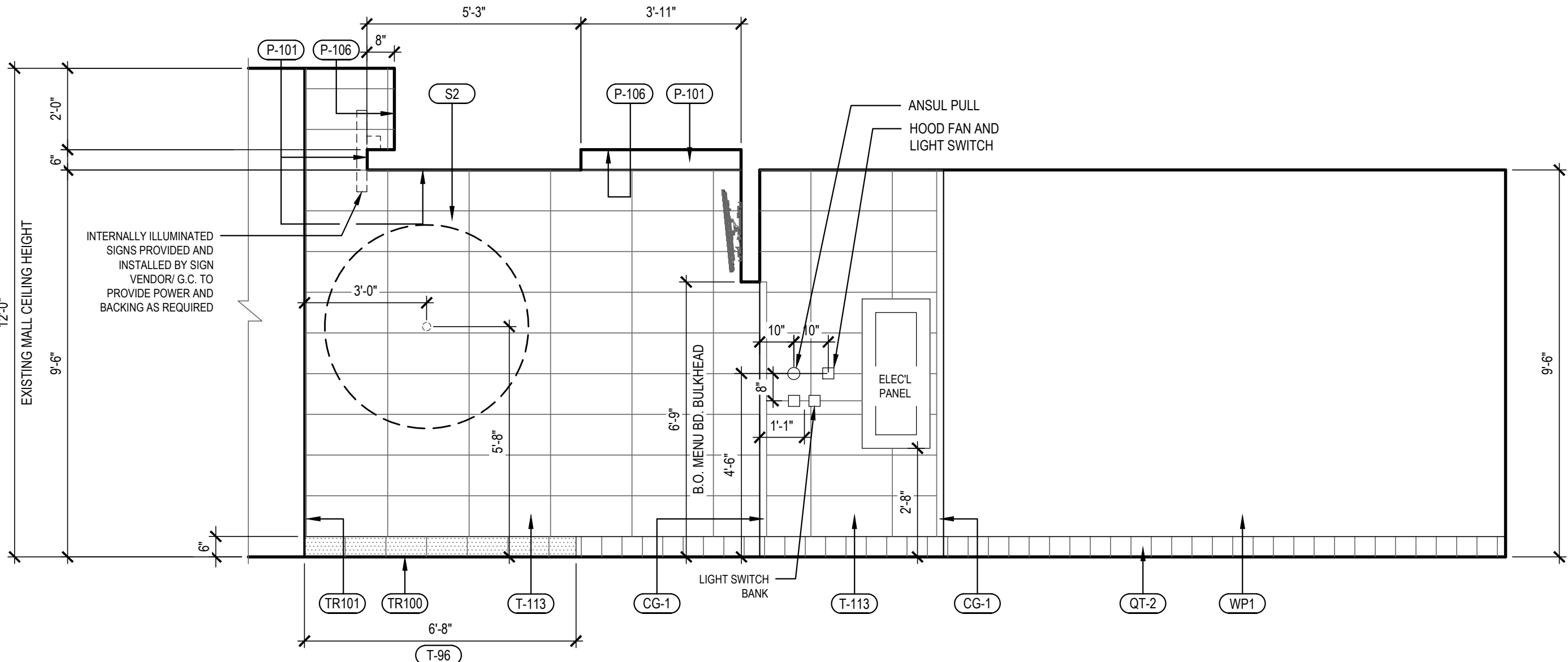
MATERIAL SCHEDULE

INSTALLED AND FURNISHED BY: G.C. UNLESS NOTED OTHERWISE

NO	MANUFACTURER	DESCRIPTION	SPECIFICATION	REMARKS	FURNISHED BY:	INSTALLED BY:	CONTACT
(WP1)	CRANE COMPOSITES INC.	F.R.P. THICKNESS: .075	COLOR: #636 (LIGHT GRAY)		G.C.	G.C.	WADE WARFORD 425.260.3495
(WP2)		S.S. PANEL (22 GA)	FINISH: STRAIGHT BRUSHED FINISH	FURNISHED BY PX/ INSTALLED BY G.C.	G.C.	G.C.	
(WP3)		S.S. PANEL (22 GA)	FINISH: DIAMOND PATTERN FINISH	FURNISHED BY PX/ INSTALLED BY G.C.	G.C.	G.C.	
(W102)	WOLF GORDON	PRINT WALL COVERING	COLOR: RED BAMBOO	CUSTOM WALL COVERING AVAILABLE ONLY FROM P.X. VENDOR	G.C.	G.C.	CATHY DY 310.770.1165
(QZ-7)	CORIAN QUARTZ	COMPOSIT SOLID SURFACE	FINISH: POLISHED COLOR: LONDON SKY	SERVICE COUNTER TOP	G.C.	G.C.	
(P-101)	SHERWIN-WILLIAMS	PAINT	COLOR: SW 6252 ICE CUBE PROMAR 200, ZERO VOC, LATEX SEMI-GLOSS		G.C.	G.C.	
(P-106)	SHERWIN-WILLIAMS	PAINT	COLOR: SW 7020 BLACK FOX PROMAR 200, ZERO VOC, LATEX SEMI-GLOSS		G.C.	G.C.	
(QT)	DALTILE	QUARRY TILE	COLOR: ARID GRAY (0Q42) FINISH: PLAIN	MFR: MAPEI - 800.42.MAPEI- WWW.MAPEI.COM STYLE: LATEX MODIFIED GROUT #47 COLOR/FINISH: CHARCOAL/SANDED SIZE: 3/16"	G.C.	G.C.	
(QT-1)	DALTILE	QUARRY TILE	COLOR: ARID GRAY (0Q42) FINISH: ABRASIVE	MFR: MAPEI - 800.42.MAPEI- WWW.MAPEI.COM STYLE: LATEX MODIFIED GROUT #47 COLOR/FINISH: CHARCOAL/SANDED SIZE: 3/16"	G.C.	G.C.	
(QT-2)	DALTILE	QUARRY TILE COVE BASE	COLOR: ARID GRAY (0Q42) FINISH: PLAIN	MFR: MAPEI - 800.42.MAPEI- WWW.MAPEI.COM STYLE: LATEX MODIFIED GROUT #47 COLOR/FINISH: CHARCOAL/SANDED SIZE: 3/16"	G.C.	G.C.	
(T-96)	DALTILE	6"X12" COVE BASE S-36C9T	COLOR: BLACK AC10 FINISH: UNPOLISHED	MFR: MAPEI - 800.42.MAPEI- WWW.MAPEI.COM STYLE: LATEX MODIFIED GROUT #47 COLOR/FINISH: CHARCOAL/SANDED SIZE: 1/8"	G.C.	G.C.	NATIONAL ACCOUNTS@ DAL TILE.COM PH: (877) 556-5728
(T-110)	DALTILE	FOREST PARK		MFR: MAPEI - 800.42.MAPEI- WWW.MAPEI.COM STYLE: LATEX MODIFIED GROUT #47 COLOR/FINISH: CHOCOLATE/ SANDED SIZE: 1/8"	G.C.	G.C.	NATIONAL ACCOUNTS@ DAL TILE.COM PH: (877) 556-5728
(T-112)	DALTILE	NERO PORCELAIN	SIZE: 12"X12" MESH NERO MOSAIC	MFR: CUSTOM BUILDING PRODUCTS STYLE: LATEX MODIFIED GROUT #370 COLOR/FINISH: DOVE GRAY	G.C.	G.C.	NATIONAL ACCOUNTS@ DAL TILE.COM PH: (877) 556-5728
(T-113)	DALTILE	ANCHORAGE	SIZE: 12"X24" INSTALL HORIZONTALLY	MFR: MAPEI - 800.42.MAPEI- WWW.MAPEI.COM STYLE: LATEX MODIFIED GROUT #47 COLOR/FINISH: CHARCOAL/SANDED SIZE: 1/8"	G.C.	G.C.	NATIONAL ACCOUNTS@ DAL TILE.COM PH: (877) 556-5728
(T-200)	CMC BRAVADA	SIZE: 24"X24"	COLOR: GREIGE	MFR: MAPEI - 800.42.MAPEI- WWW.MAPEI.COM STYLE: LATEX MODIFIED GROUT #41 COLOR/FINISH: SAHARA BEIGE/ SANDED SIZE: 1/4"	G.C.	G.C.	CMC DOUG SALATINO PH: (618) 713-5371 AMY HARRISON PH: (616) 874-4600 EXT. 290
(S2)	SCHULT INDUSTRIES	60" Ø HEAT-INFUSED FAMILY SEAL	COLOR: WHITE		G.C.	G.C.	

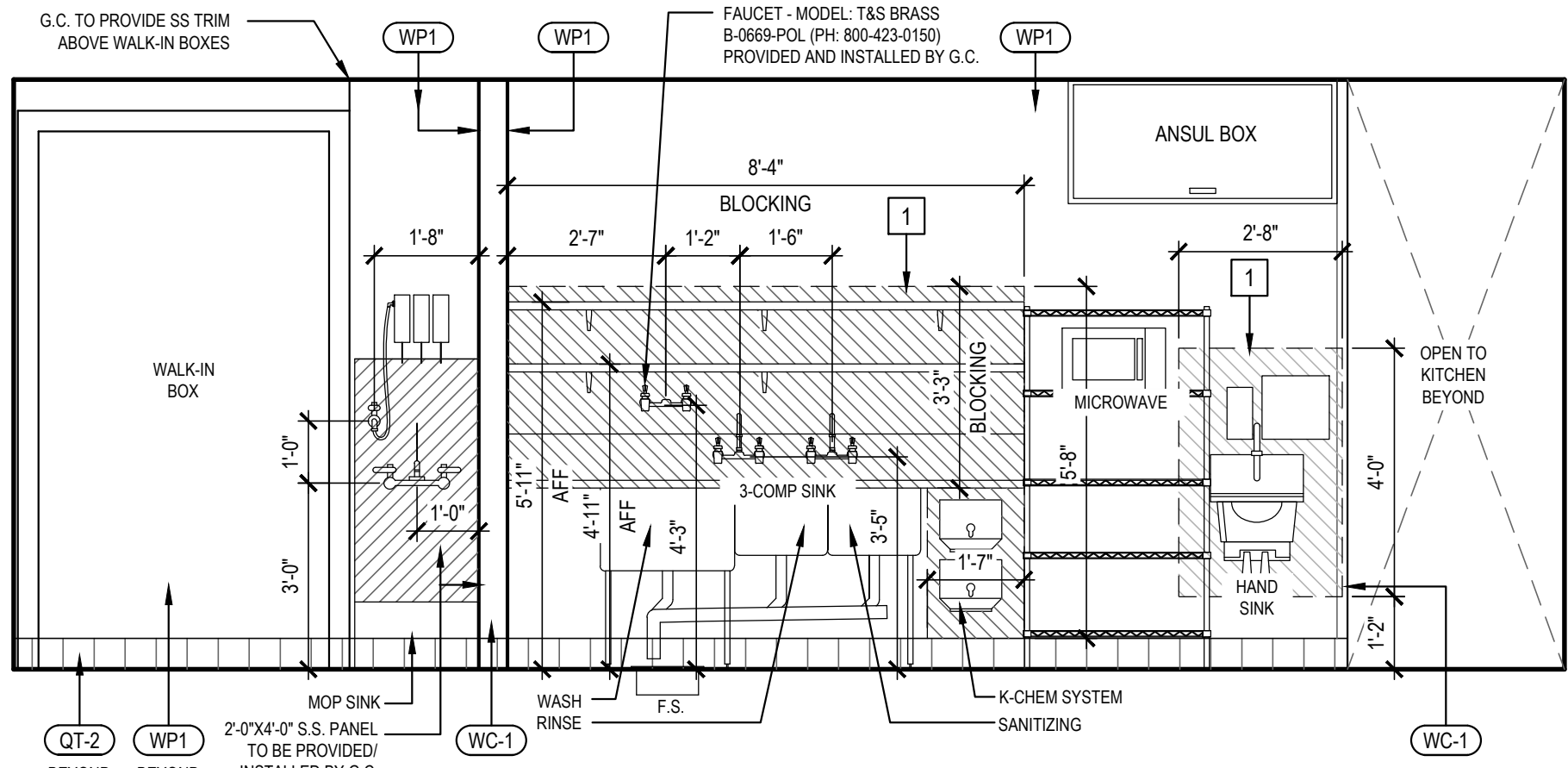
MATERIAL SCHEDULES 6

NTS A-201



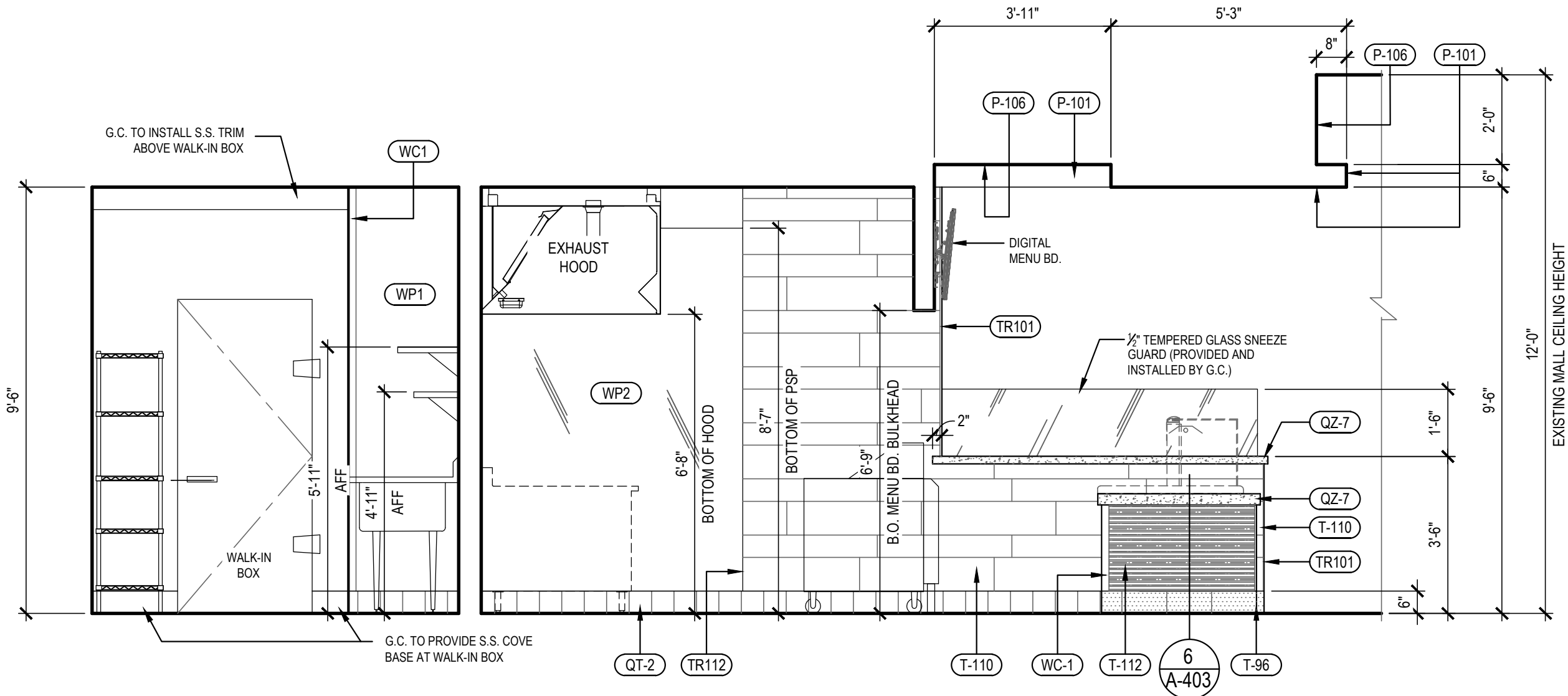
INTERIOR ELEVATION 3

Scale: 3/8" = 1'-0" A-201



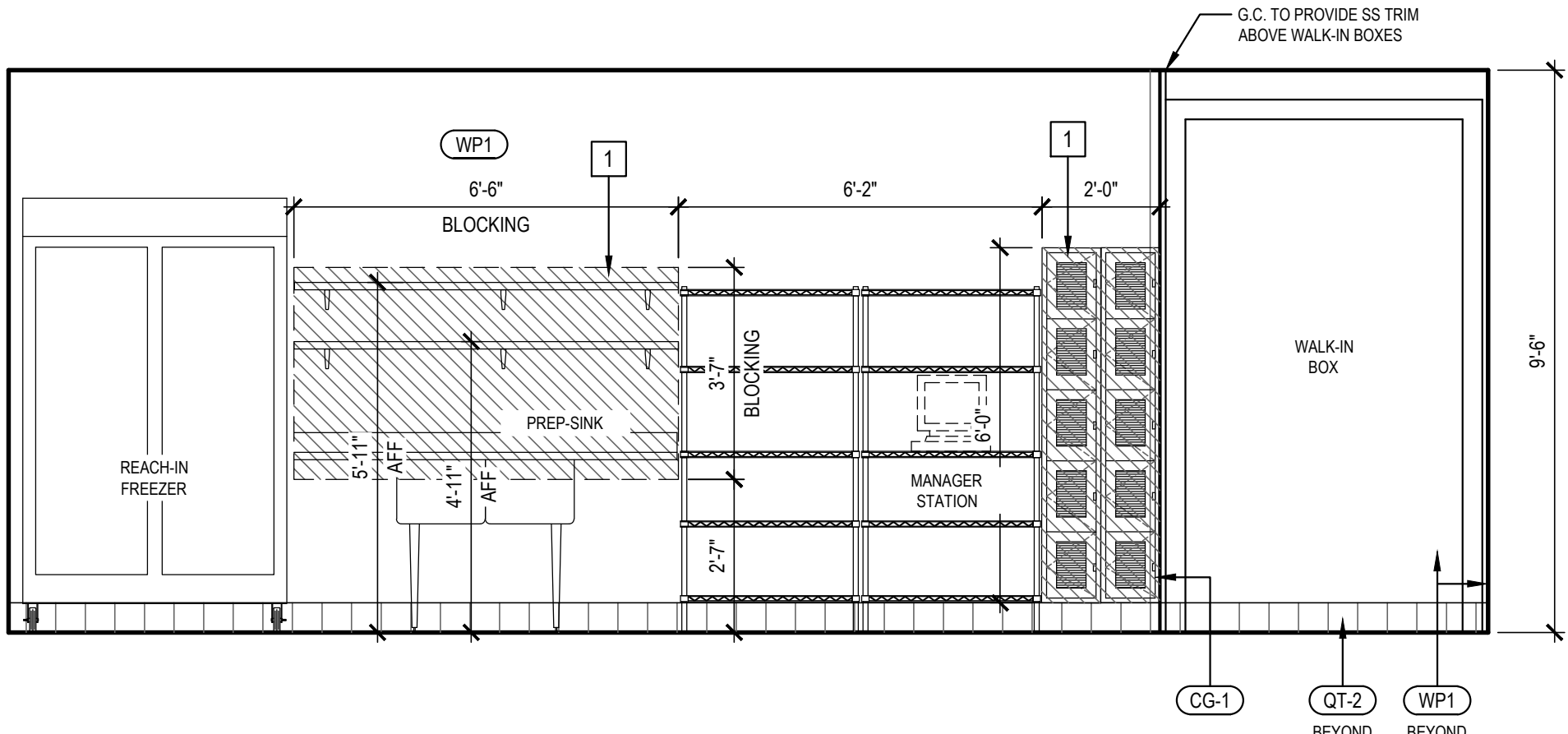
BLOCKING DETAILS 5

A-201



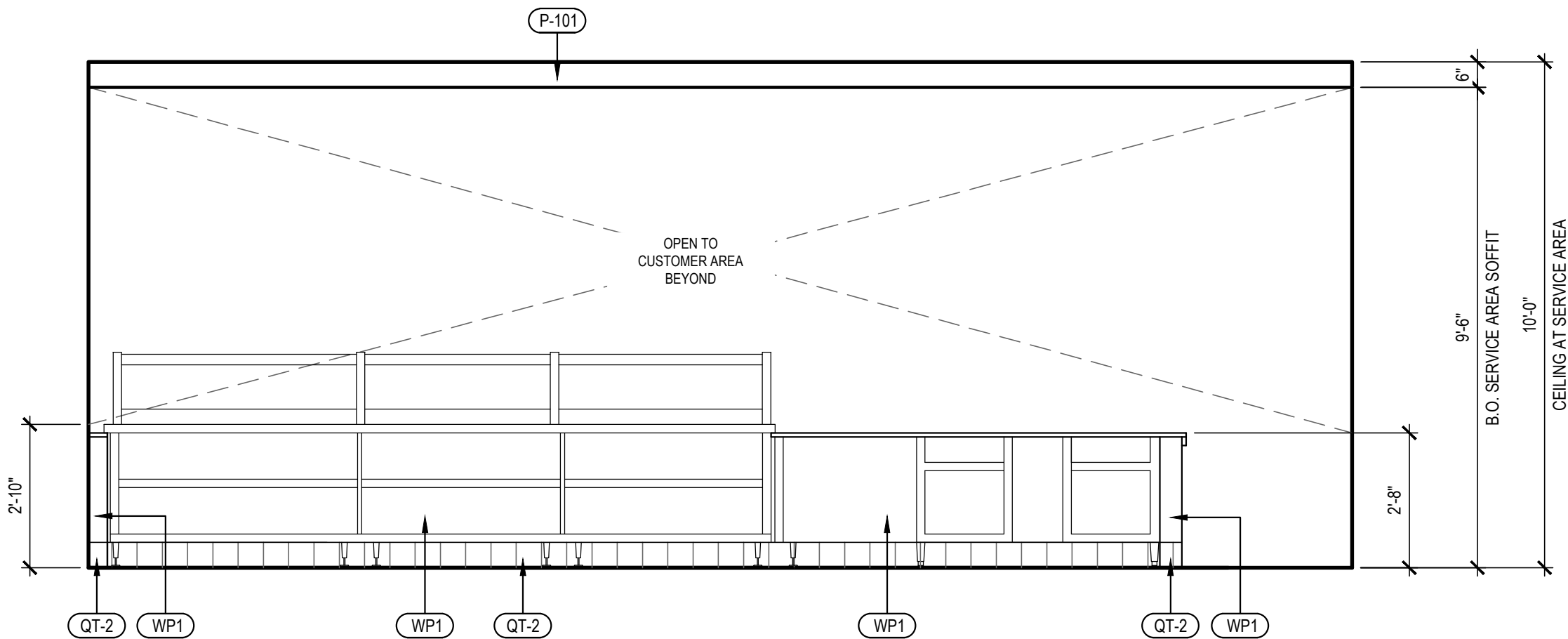
INTERIOR ELEVATION 2

Scale: 3/8" = 1'-0" A-201



INTERIOR ELEVATION 4

Scale: 3/8" = 1'-0" A-201



INTERIOR ELEVATION 1

Scale: 3/8" = 1'-0" A-201



PANDA RESTAURANT GROUP INC.

1683 Walnut Grove Ave.
Rosemead, California
91770

Telephone: 626.799.9898
Facsimile: 626.372.8288

All ideas, designs, arrangement and plans indicated or represented by this drawing are the property of Panda Express Inc. and were created for use on this specific project. None of these ideas, designs, arrangements or plans may be used by or disclosed to any person, firm, or corporation without the written permission of Panda Express Inc.

REVISIONS:

1	PLAN REVIEW COMMENTS	03/26/2021
2	PLAN REVIEW COMMENTS	04/22/2021

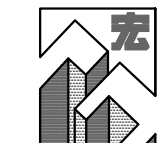
ISSUE DATE:

1	95% SUBMITTAL	01/11/2021
2	100% SUBMITTAL	04/16/2021
3	100% RESUBMITTAL	05/14/2021
4	FINAL SUBMITTAL	06/08/2021

DRAWN BY: STAFF

PANDA PROJECT #: D7395

ARCH PROJECT #:



GARY WANG
& ASSOCIATES, INC.

1000 Corporate Center Dr., Ste. 550
Monterey Park, CA 91754
TEL: (626) 288-6898 FAX: (626) 768-7101
http://www.garywang.com



PANDA EXPRESS

ROBINS AFB SHOPPING CENTER
ROBINS AFB, GA

A-201

INTERIOR ELEVATIONS

BID SET - 2021/06/28