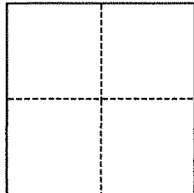


CORNER RECORD

Agency Index BK 143 PG 4Document Number CR 14981City of OAKLAND County of ALAMEDA, CaliforniaBrief Legal Description MONUMENT AT INTERSECTION OF 4TH AVE AND 11TH ST

CORNER TYPE



☐ Government Corner ☒ Control
☐ Meander ☐ Property
☐ Rancho ☐ Other

Date of Survey November 4, 2020

COORDINATES (Optional)

N. _____ E. _____

Elevation _____

Units ☐ Metric ☒ U.S. Survey Foot

Horizontal Datum _____

Zone _____ Epoch Date _____

Vertical Datum _____

☐ Complies with Public Resources Code §§8801-8819☐ Complies with Public Resources Code §§8890-8902PLS Act Ref.: ☐ 8765(d) ☒ 8771 ☐ 8773 ☐ Other:

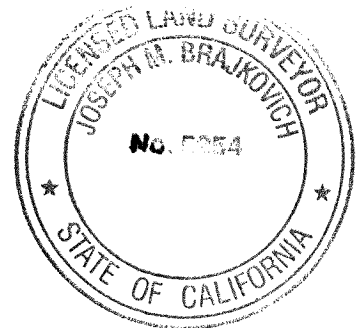
Corner/
Monument: ☐ Left as found ☐ Established ☐ Rebuilt ☒ Pre-Construction
☐ Found and tagged ☐ Reestablished ☒ Referenced ☐ Post-Construction

Narrative of corner identified and monument as found, set, reset, replaced, or removed:

☐ See sheet #2 for description(s):

SURVEYOR'S STATEMENT

This Corner Record was prepared by me or under my direction in conformance with

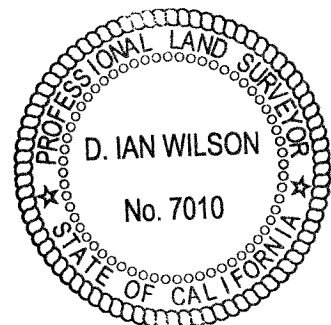
the Professional Land Surveyors' Act on November 30, 2020Signed [Signature] P.L.S. or R.C.E. No. 5254

COUNTY SURVEYOR'S STATEMENT

This Corner Record was received _____

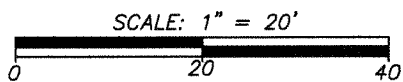
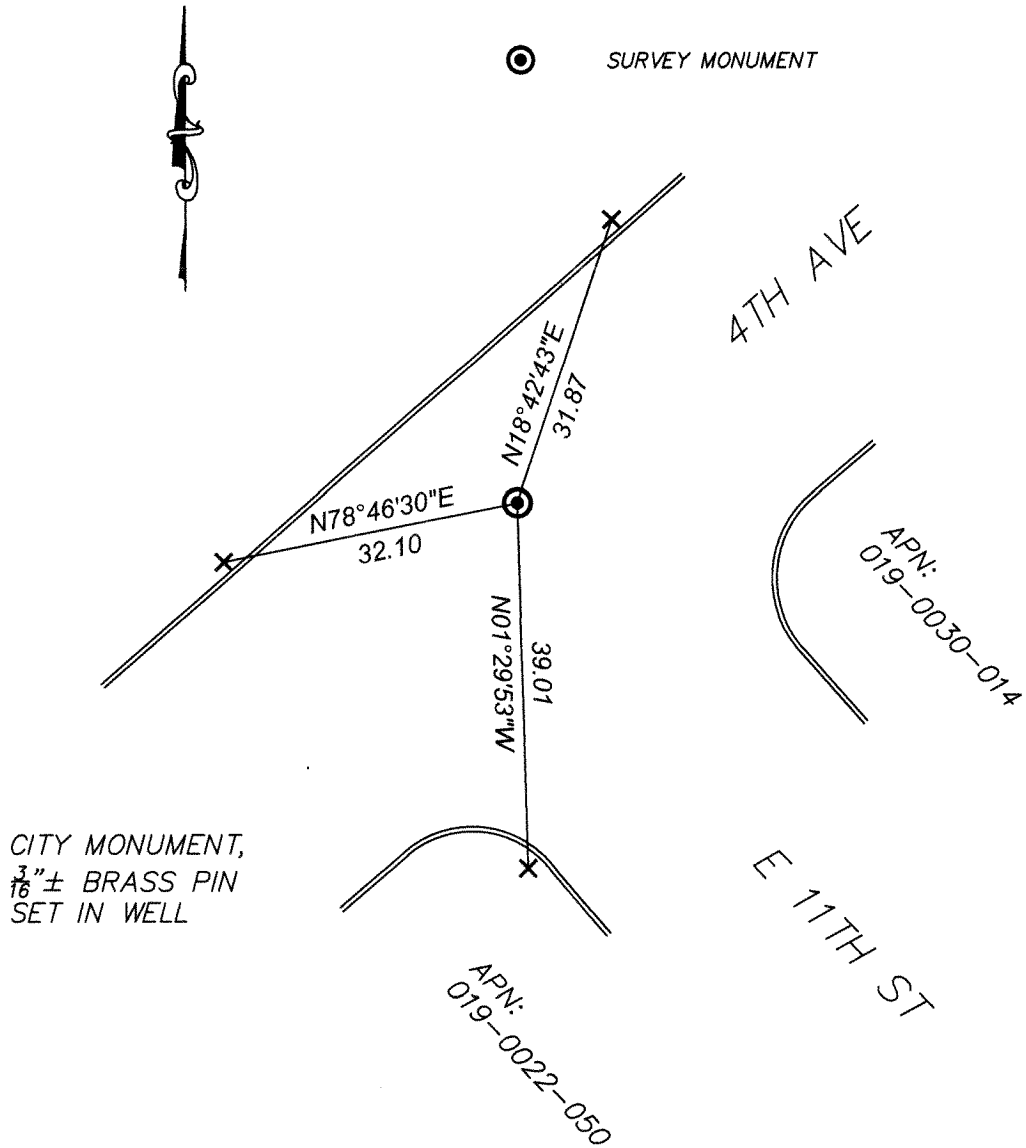
and examined and filed 11/30/2021Signed [Signature] P.L.S. or R.C.E. No. 7010Title ALAMEDA COUNTY SURVEYOR

County Surveyor's Comment _____



LEGEND

- X CUT CROSS
- ⊙ SURVEY MONUMENT



20010-012221