

CORNER RECORD

Agency Index

BK 150 PG 65

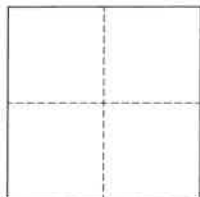
Document Number

CR 16361

City of BerkeleyCounty of Alameda, CaliforniaBrief Legal Description Intersection of Colusa Avenue and San Lorenzo Avenue

CORNER TYPE

COORDINATES (Optional)



- ☐ Government Corner ☒ Control
☐ Meander ☐ Property
☐ Rancho ☐ Other

Date of Survey 11/18/2022

N. _____ E. _____

Elevation _____

Units ☐ Metric ☐ U.S. Survey Foot

Horizontal Datum _____

Zone _____ Epoch Date _____

Vertical Datum _____

☐ Complies with Public Resources Code §§8801-8819☐ Complies with Public Resources Code §§8890-8902

PLS Act Ref.:

☐ 8765(d)☒ 8771☐ 8773☐ Other:Corner/
Monument:☐ Left as found☐ Established☐ Rebuilt☐ Pre-Construction☐ Found and tagged☒ Reestablished☐ Referenced☒ Post-Construction

Narrative of corner identified and monument as found, set, reset, replaced, or removed:

☒ See sheet #2 for description(s):

- 2" BRASS DISK, WITH PUNCH, IN WELL, STAMPED "CITY OF BERKELEY" & "UNLAWFUL TO DEFACE". REESTABLISHED USING VERTICAL AND HORIZONTAL CONTROL FROM PRE-CONSTRUCTION CORNER RECORD 16219, OF ALAMEDA COUNTY RECORDS.

SURVEYOR'S STATEMENT

This Corner Record was prepared by me or under my direction in conformance with

the Professional Land Surveyors' Act on December 9, 2022

Signed

P.L.S. or R.C.E. No.

8040

COUNTY SURVEYOR'S STATEMENT

This Corner Record was received

and examined and filed

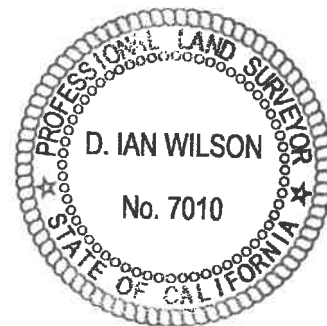
JAN 3 4 2023

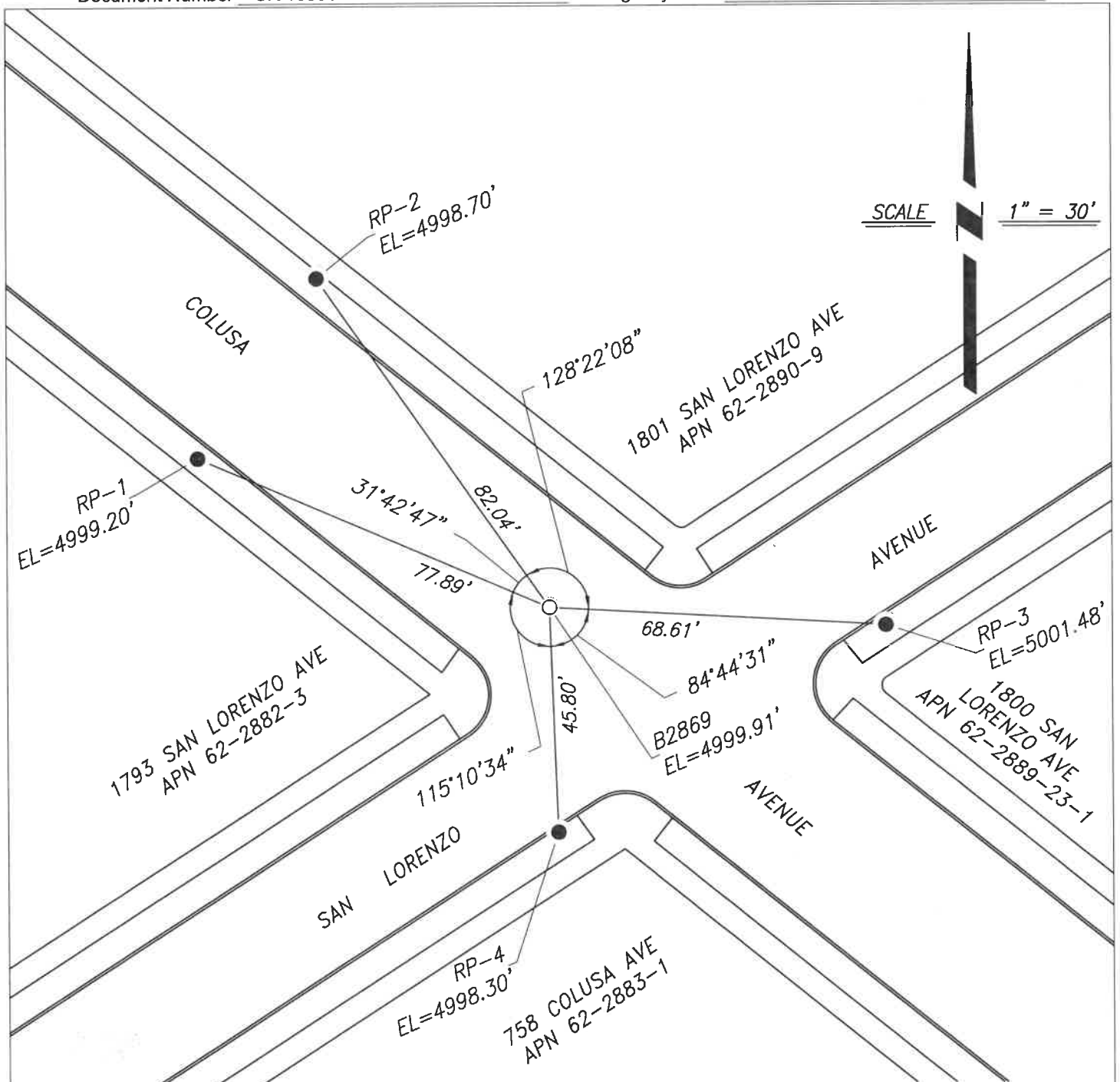
Signed

P.L.S. or R.C.E. No.

7010Title ALAMEDA COUNTY SURVEYOR

County Surveyor's Comment





REFERENCE

(A) CORNER RECORD 16219, IN THE CITY OF BERKELEY, FILED SEPTEMBER 1, 2022, ALAMEDA COUNTY RECORDS.

LEGEND

- SET MONUMENT, 2" BRASS DISK IN CONCRETE, WITH PUNCH, STAMPED "CITY OF BERKELEY" & "UNLAWFUL TO DEFACE", IN WELL
- FOUND 3/4" IRON PIPE, WITH CAP, STAMPED LS 8040, IN LANDSCAPE AREA, AS REFERENCE POINT

NOTES

1. ALL REFERENCES ARE ALAMEDA COUNTY RECORDS
2. BASIS OF ELEVATIONS: REFERENCE POINTS OF CORNER RECORD 16219
3. CITY OF BERKELEY MONUMENT B2869