

# CORNER RECORD

Agency Index

BK 100 PL-66

Document Number

CR 10426

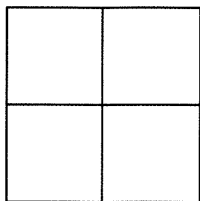
City of EDEN TOWNSHIP

County of ALAMEDA, California

Brief Legal Description BRASS DISK MONUMENT LOCATED WITHIN THE INTERSECTION OF SHAWN WAY AND LORI WAY

## CORNER TYPE

## COORDINATES (Optional)



Government Corner ☐ Control ☒  
Meander ☐ Property ☐  
Rancho ☐ Other ☐

N. 2075353± E. 6114406±

Elevation

Units Metric ☐ U.S. Survey Foot ☐

Horizontal Datum

Zone Epoch Date

Vertical Datum

☐ Complies with Public Resources Code §§8801-8819☐ Complies with Public Resources Code §§8890-8902

Date of Survey 6/6/17

PLS Act Ref: ☐ 8765(d)☒ 8771☐ 8773☐ Other:Corner/  
Monument: ☒ Left as found☐ Established☐ Rebuilt☐ Pre-Construction☐ Found and tagged☐ Reestablished☐ Referenced☒ Post-Construction

Narrative of corner identified and monument as found, set, reset, replaced, or removed:

☐ See sheet #2 for description(s) : SEE CR 9450

FOUND BRASS DISK WITH PUNCH IN MONUMENT WELL.

FOUND AND SET POINTS AS SHOWN ON PAGE 2.

THIS POINT WAS FOUND IN GOOD CONDITION AFTER A CONSTRUCTION PROJECT IN THE VICINITY.  
THE TIES SHOWN HEREON ARE FOR THE PURPOSE OF PERPETUATING FOUND MONUMENTATION.  
NO CLAIM IS MADE AS TO THE RELATIONSHIP OF THE POINTS OR LINES SHOWN HEREON TO TRUE  
BOUNDARY LOCATION.

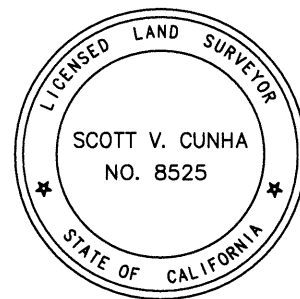
## SURVEYOR'S STATEMENT

This Corner Record was prepared by me or under my direction in conformance with

the Professional Land Surveyors' Act on JUNE 16, 2017.

Signed Scott V. Cunha P.L.S. or R.C.E. No. LS 8525

SCOTT V. CUNHA



## COUNTY SURVEYOR'S STATEMENT

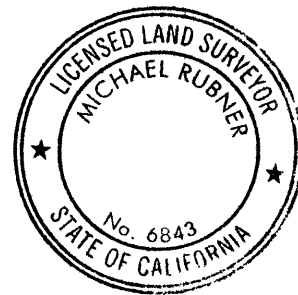
This Corner Record was received 20 JULY, 2017

and examined and filed 25 AUGUST, 2017.

Signed Michael Rubner P.L.S. or R.C.E. No. 6843

Title COUNTY SURVEYOR

County Surveyor's Comment

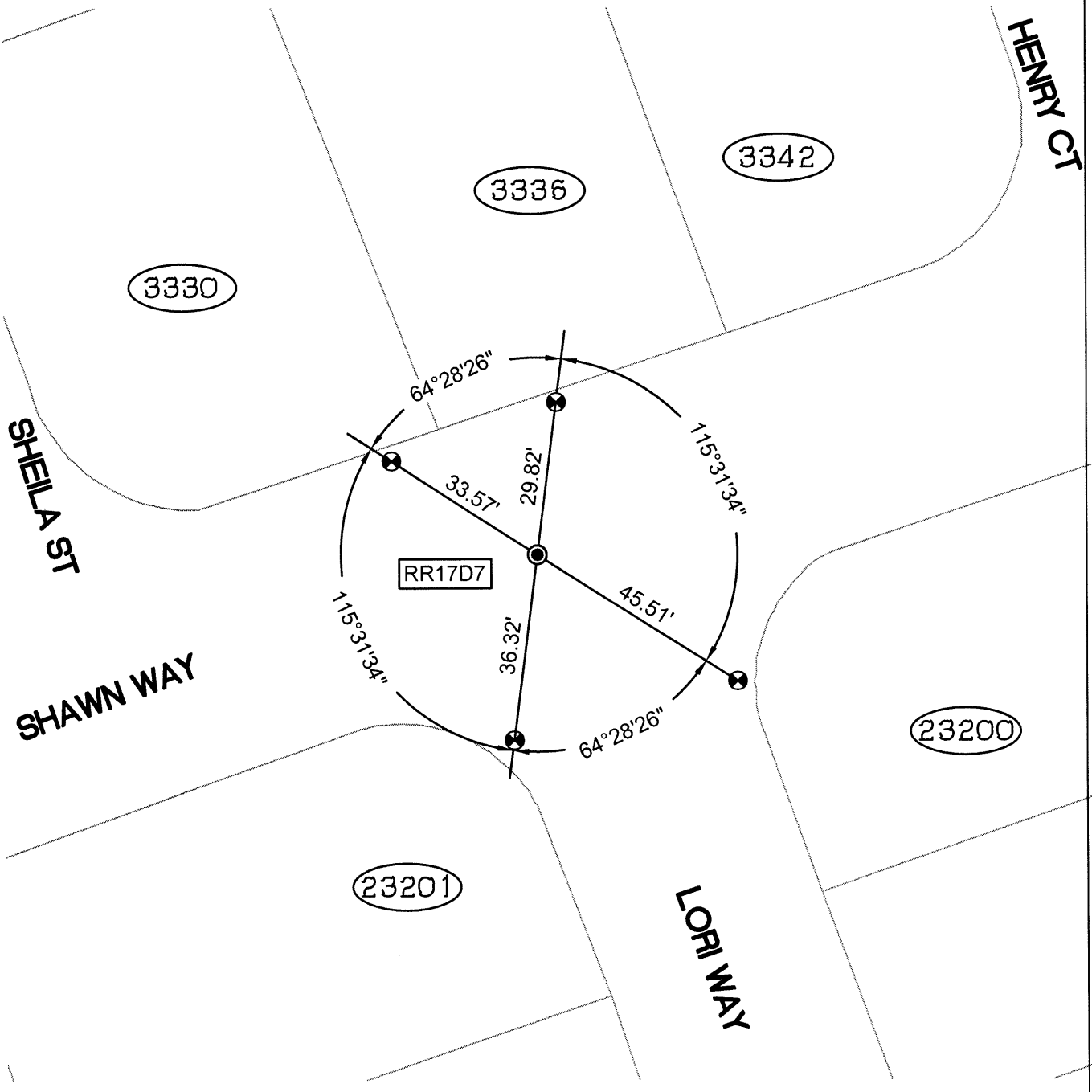


SPEC-2315-POST

SCALE: 1"=30'

## LEGEND

- FOUND BRASS DISK WITH PUNCH IN MONUMENT WELL
- ⊗ FOUND CUT CROSS IN WALK
- ✕ FOUND CUT CROSS IN CURB
- ✕ FOUND MAG AND SHINER
- FOUND REBAR & CAP STAMPED "CEI RP"
- AA### ALAMEDA COUNTY MONUMENT ID
- (19592) REFERENCE STREET ADDRESS



216178-SHAWN-CR11 post