

LEGEND

- SET "PK" NAIL & SHINER IN PUNT.
- SET 3/4" I.P. & PLUG, L.S. 3728
- 50' BUILDING SETBACK LINE FROM E GRUBBS ROAD
- (A) RECORD PER R.O.S. BK. 33, PG. 73
- (D) RECORD PER 386 O.R. 231
- (M) MEASURED

NOTES:

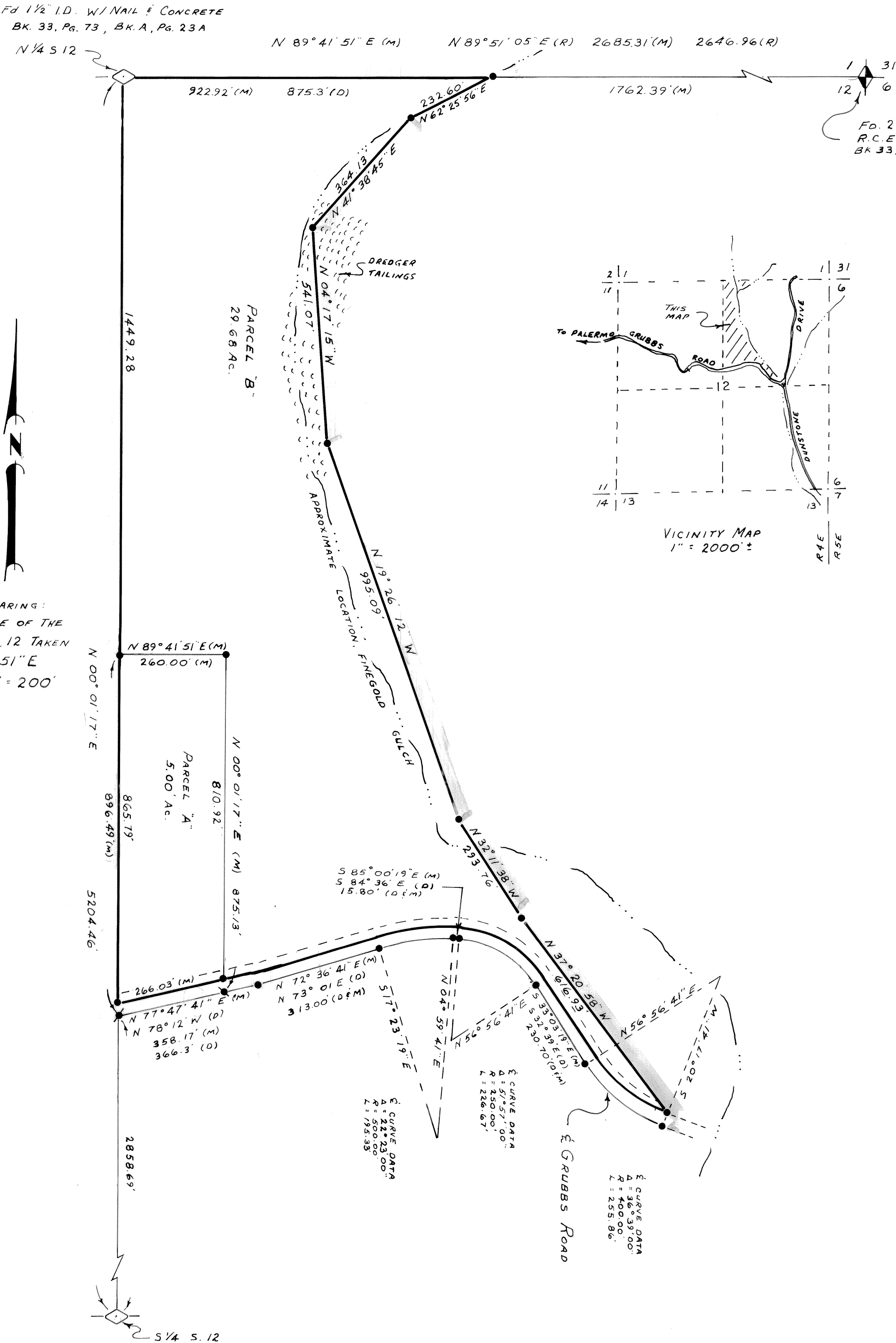
SEWAGE SETBACK: 50'
FROM FINEGOLD GULCH
AND DREDGER TAILINGS

DRAINAGE EASEMENT:
20' ON EACH SIDE
OF FINEGOLD GULCH

FD. 3/4" SQUARE NARROW TOOTH
& SCRIBED STONE PER BK. 11, PG. 7
SET 2 1/2" BRASS DISK, L.S. 3728

PARCEL MAP

OF
A PORTION OF THE NE 1/4 OF
SECTION 12, T. 18 N., R. 4 E.,
M.D.B. & M., UNINCORPORATED
AREA OF BUTTE COUNTY, CALIF.



BASIS OF BEARING:
THE NORTH LINE OF THE
NE 1/4 OF SEC. 12 TAKEN
AS N 89° 41' 51" E
SCALE: 1" = 200'

SURVEYOR'S CERTIFICATE

THIS MAP WAS PREPARED BY ME OR UNDER MY DIRECTION AND WAS COMPILED FROM RECORD DATA AND IS BASED UPON A FIELD SURVEY IN CONFORMANCE WITH THE REQUIREMENTS OF THE "SUBDIVISION MAP ACT" AT THE REQUEST OF ALLEN PALMER IN OCTOBER 1972. I HEREBY CERTIFY THAT IT CONFORMS WITH THE APPROVED TENTATIVE MAP AND THE CONDITIONS OF APPROVAL, THEREOF, THAT ALL PROVISIONS OF APPLICABLE STATE LAW AND LOCAL ORDINANCES HAVE BEEN COMPLIED WITH.

CHARLES W. MUNCY L.S. 3728

COUNTY SURVEYOR'S CERTIFICATE

THIS MAP HAS BEEN EXAMINED THIS 9 DAY OF NOVEMBER, 1972, IN CONFORMANCE WITH THE REQUIREMENTS OF SECTION 11575 OF THE "SUBDIVISION MAP ACT".

Clay Castleberry
CLAY CASTLEBERRY R.O.E. 14224
COUNTY SURVEYOR

RECORDERS CERTIFICATE

FILED FOR RECORD THIS 9 DAY OF NOVEMBER, 1972, AT 10:40 A.M. IN BOOK 44 OF MAPS AT PAGE 53, AT THE REQUEST OF "KENDALL ENGINEERING".

SERIAL NO. 13502
Louise Kluender
LOUISE KLUENDER
COUNTY RECORDER

KENDALL ENGINEERING

1751 ORO-DAM BLVD. - SUITE 2
OROVILLE, CALIFORNIA - 95965
(916) 534-7550

JOB NO. 72-576

SHEET 1 OF 1