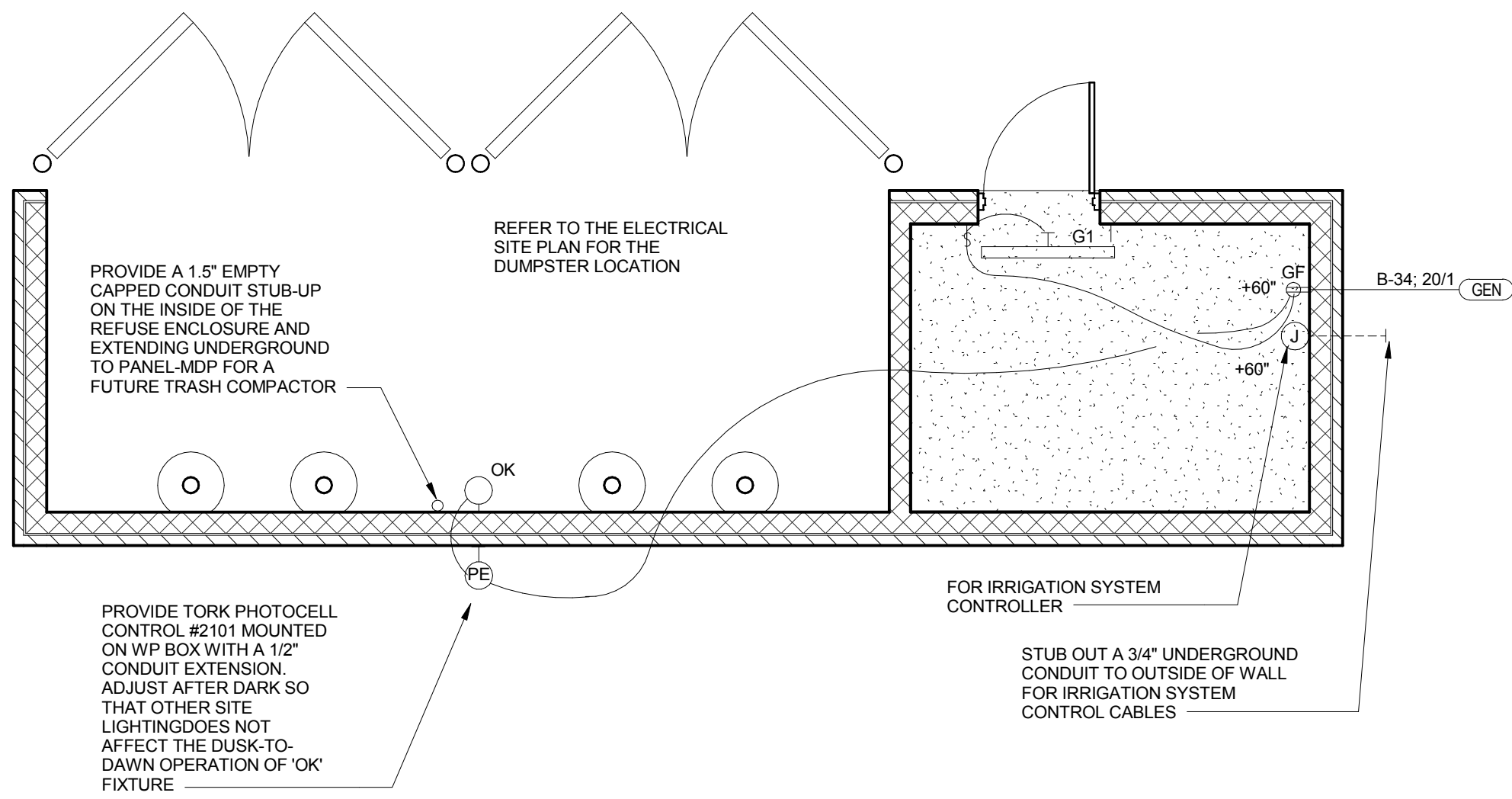


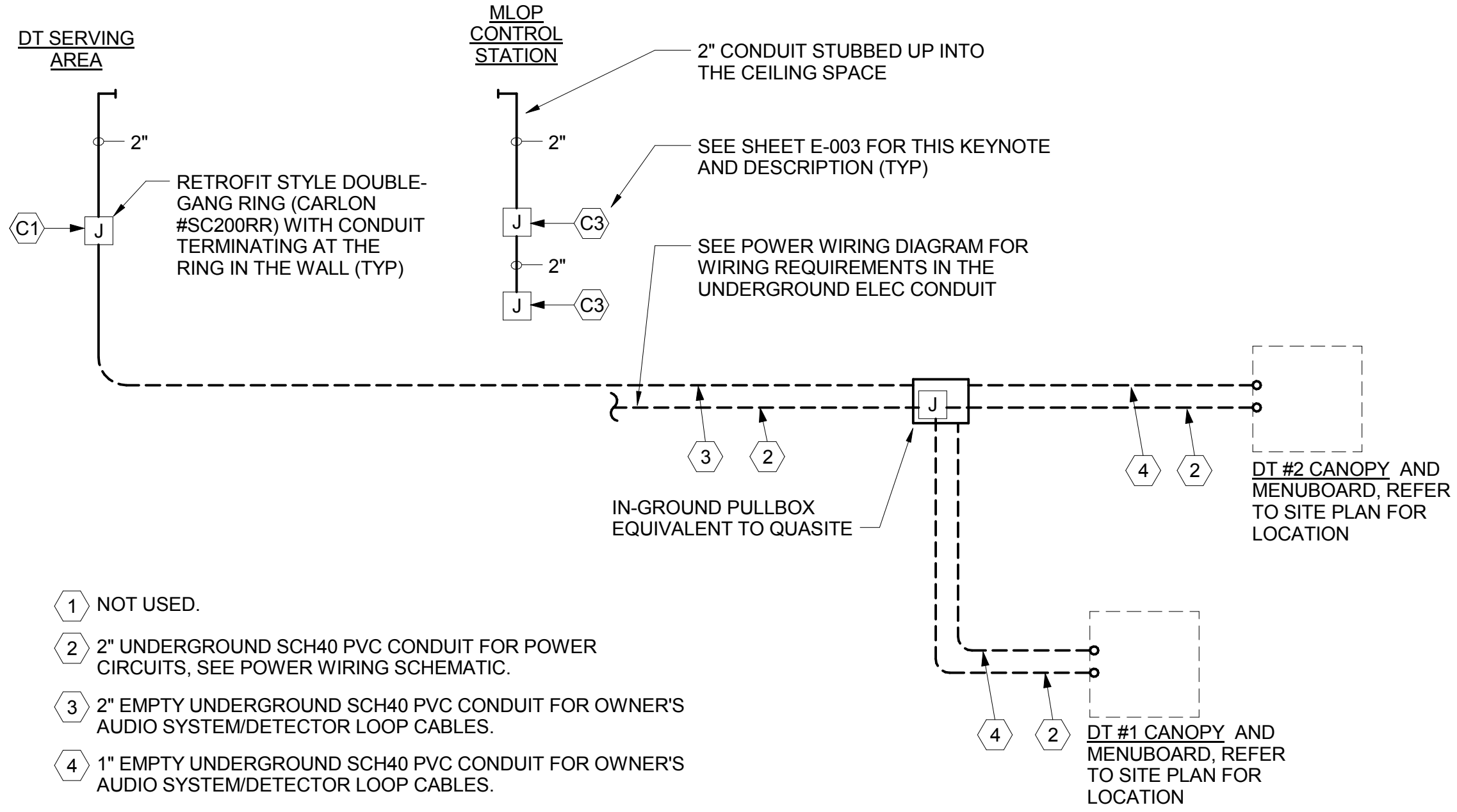
3/12/2018 4:38:49 PM

FOR BID ONLY

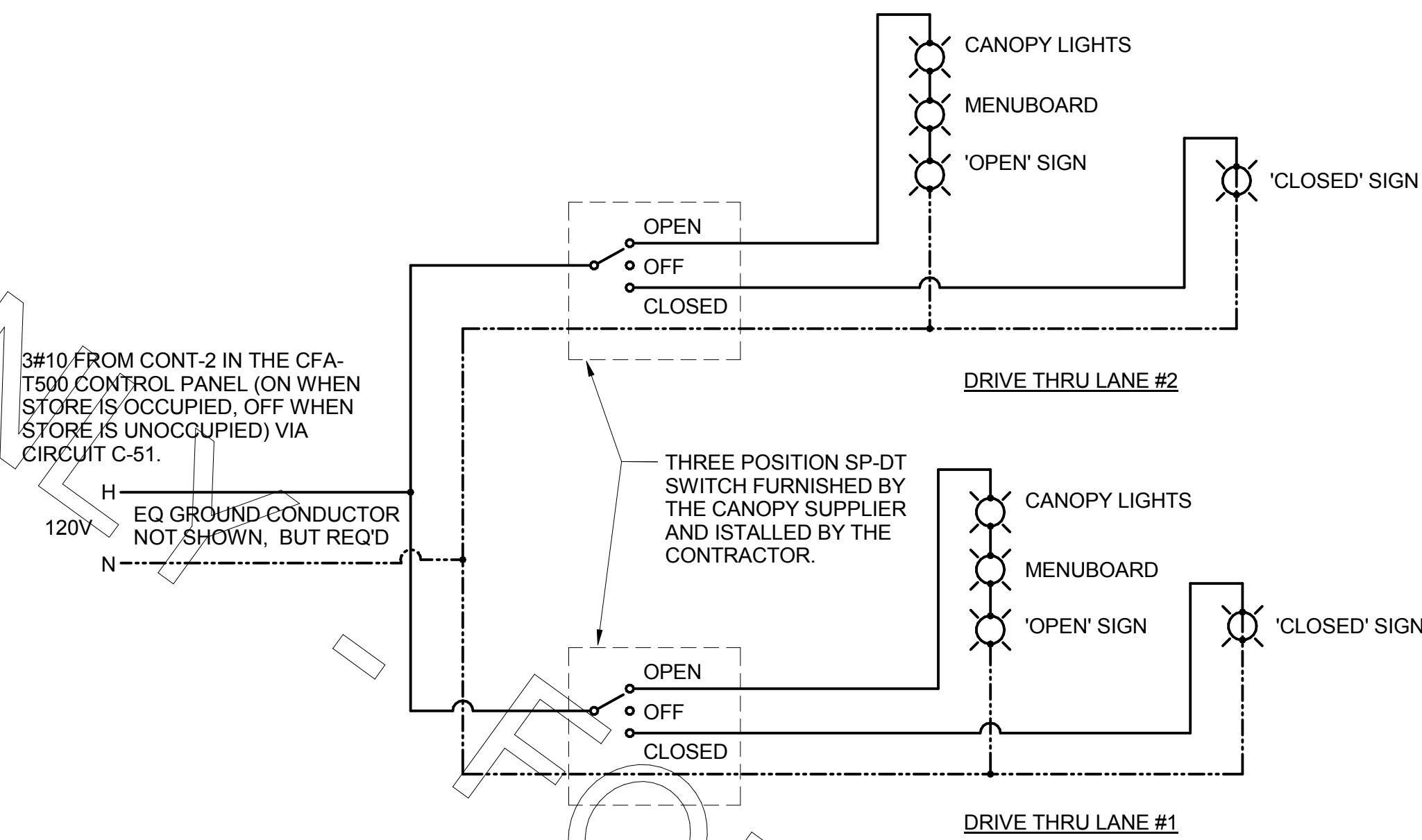
FOR BID ONLY



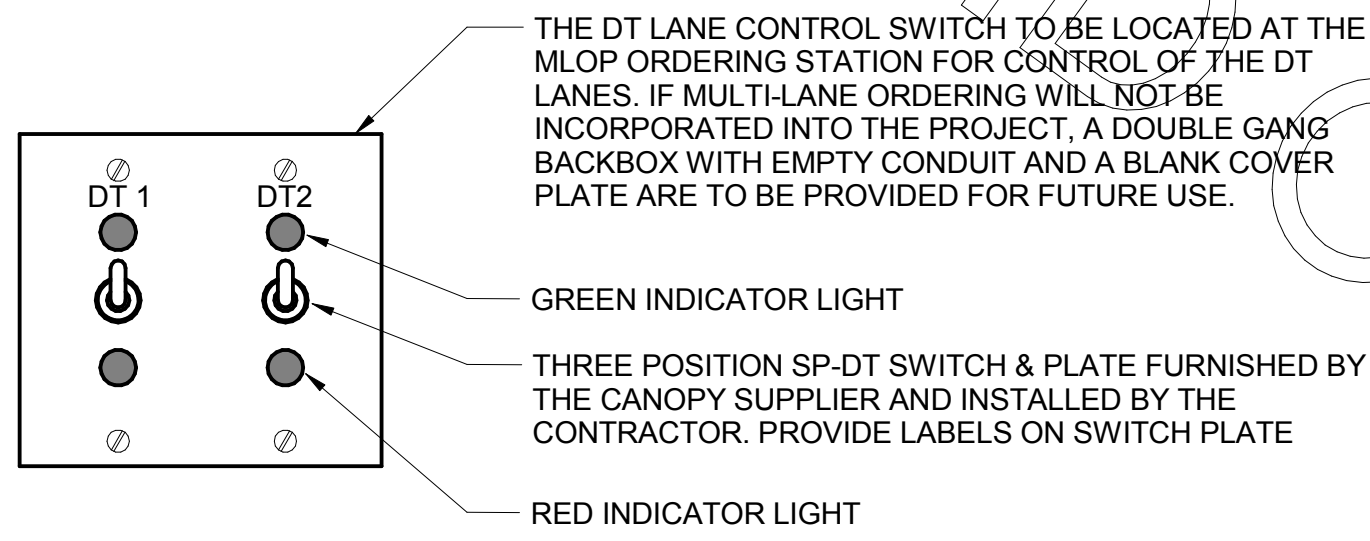
A3 REFUSE ENCLOSURE ELECTRICAL PLAN
1/4" = 1'-0"



A1 MULTI-LANE DRIVE-THRU ORDER AREA CONDUIT REQUIREMENTS



MULTI-LANE DRIVE-THRU ORDER AREA CANOPY POWER WIRING SCHEMATIC



3 POSITION DT LANE CONTROL STATION

A1 MLOP DRIVE-THRU REQUIREMENTS
NO SCALE



Chick-fil-A
5200 Buffington Road
Atlanta, Georgia 30349-2998

INTERPLAN

ARCHITECTURE
ENGINEERING
INTERIOR DESIGN
PROJECT MANAGEMENT

604 COURTLAND STREET
SUITE 100
ORLANDO, FLORIDA 32804
PH 407.645.5008
FX 407.629.9124

SEAL:
UNLESS THE WORDS "NOT FOR CONSTRUCTION"
SIGNATURE AND SEAL APPEAR BELOW:

CHICK-FIL-A

Cherokee Place

115 Cherokee Place , Cartersville, GA 30121

FSR# 00534

REVISION SCHEDULE		
NO.	DATE	DESCRIPTION

CONSULTANT PROJECT #	2017.0149
PRINTED FOR	BID
DATE	11.20.17
DRAWN BY	ME

Information contained on this drawing and in all digital files produced for above named project may not be reproduced in any manner without express written or verbal consent from authorized project representatives.

SHEET
DT ORDERING AREA
DETAILS AND REFUSE
ENCLOSURE PLAN
SHEET NUMBER

E-303

COPYRIGHT © 2017 INTERPLAN LLC. REPRODUCED OR TRANSMITTED IN ANY FORM OR BY ANY MEANS, WITHOUT PERMISSION IN WRITING, IS PROHIBITED. CHANGES OR ADDENDUMS ARE FORWARDED.