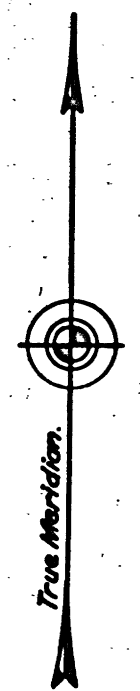
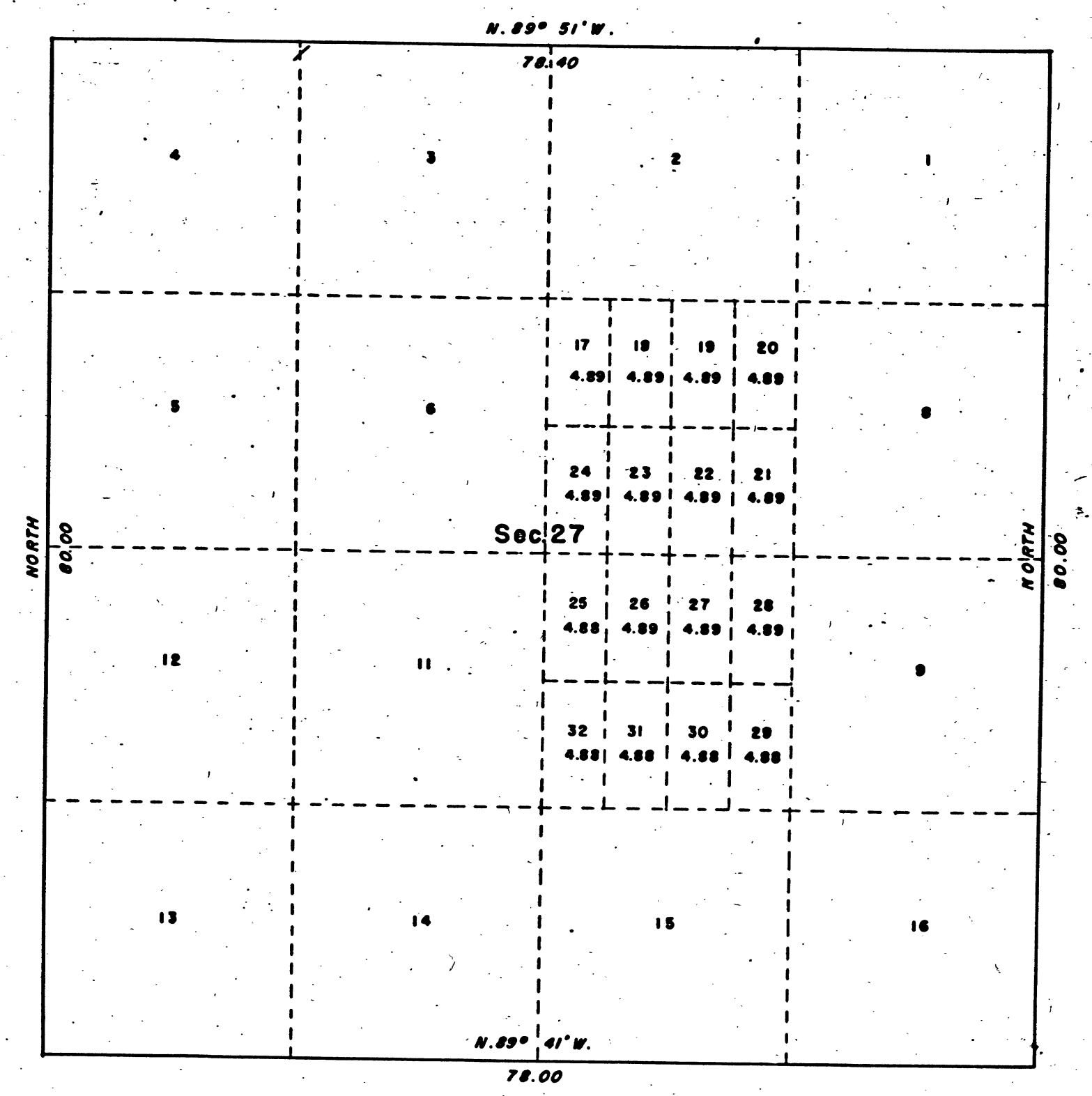


TOWNSHIP N° 4 NORTH , RANGE N° 14 EAST , MOUNT DIABLO MERIDIAN , CALIFORNIA .
SUPPLEMENTAL PLAT OF SECTION 27 .



0 5 10 15 20
Scale : 1 inch equals 10 chains.

MEMORANDUM.

THIS SUPPLEMENTAL PLAT OF SECTION 27, T. 4 N., R. 14 E., M. D. M., BASED UPON THE PLAT APPROVED APRIL 18, 1876, SHOWING A SUBDIVISION OF LOTS 7 AND 10, INTO APPROPRIATE LEASING UNITS UNDER THE FIVE ACRE ACT OF JUNE 1, 1938 (52 STAT. 609; 43 U. S. C. SEC. 682 A), IS PREPARED IN ACCORDANCE WITH INSTRUCTIONS CONTAINED IN GENERAL LAND OFFICE MEMORANDUM 1984941 "E" DATED JANUARY 6, 1945.

UNITED STATES DEPARTMENT OF THE INTERIOR
GENERAL LAND OFFICE

PUBLIC SURVEY OFFICE
GLENDALE, CALIFORNIA, JANUARY 20, 1945.
THIS SUPPLEMENTAL PLAT, SHOWING AMENDED LOTTINGS IN SECTION 27, T. 4 N., R. 14 E., MOUNT DIABLO MERIDIAN, CALIFORNIA, BASED UPON THE RECORDS OF THIS OFFICE IS HEREBY APPROVED.

A. M. B. Peterson
OFFICE CADASTRAL ENGINEER.

WASHINGTON, D. C., FEB 19 1945
THE AMENDED LOTTINGS REPRESENTED BY THIS SUPPLEMENTAL PLAT HAVING BEEN CORRECTLY MADE IN ACCORDANCE WITH THE REGULATIONS OF THIS OFFICE, THE PLAT IS HEREBY ACCEPTED.

Joel David Wolfarth
ASSISTANT COMMISSIONER.

O.S.T.

CHAINS

CHAINS
10 20 40 60 80 120

41 346

T 4 N R 14 E MD

8 454

BLM 192