

Bk 33 Pg 10

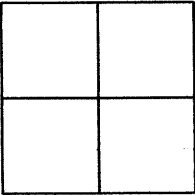
CORNER RECORD

Document Number CR 3602

City of OAKLAND

County of ALAMEDA, California

Brief Legal Description BRASS DISC IN MONUMENT WELL LOCATED WEST OF LAKE SHORE AVENUE.
(15NW26)



CORNER RECORD

Government Corner ☐ Control ☒
Meander ☐ Property ☐
Rancho ☐ Other ☐
Date of Survey 12/04/08

COORDINATES
(Optional)

N. _____
E. _____
Zone _____ Datum _____
Elev. _____

Corner — Left as found ☒ Found and tagged ☐ Established ☐ Reestablished ☐ Rebuilt ☐

Identification and type of corner found: Evidence used to identify or procedure used to establish or reestablish the corner:
FOUND BRASS DISC IN MONUMENT WELL LOCATED WEST OF LAKE SHORE AVENUE.

AS SHOWN ON CITY OF OAKLAND MONUMENT MAP, PAGE 204.

THIS POINT WAS REFERENCED PRIOR TO A CONSTRUCTION
PROJECT IN THE VICINITY.

A description of the physical condition of the monument as found and as set or reset:
FOUND AND SET POINTS AS SHOWN ON PAGE 2.

SURVEYOR'S STATEMENT

This Corner Record was prepared by me or under my direction in conformance with
the Land Surveyors' Act on DECEMBER 16, 2008.

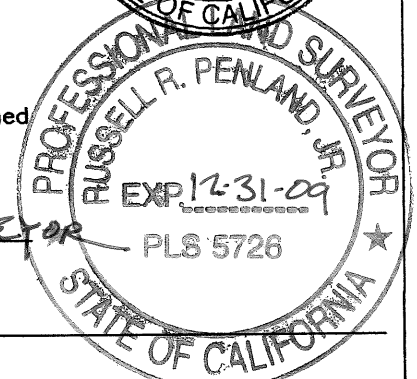
Signed VINCENT H. CUNHA L.S. Number LS 4520



COUNTY SURVEYOR'S STATEMENT

This Corner Record was received 2-3-2009 and examined
and filed 5-14-2009.

Signed Reid Penland Title COUNTY SURVEYOR



County Surveyor's Comment

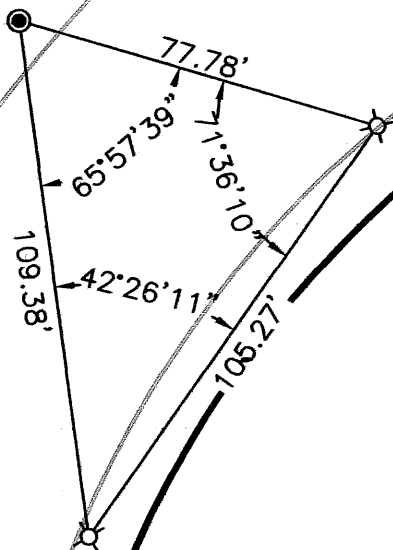
SCALE : 1"=40'

LEGEND

- FOUND BRASS DISC IN MONUMENT WELL(15NW26)
- ⊗ SET NAIL AND TAG LS 4520

LAKE MERRITT

LAKE SHORE AVENUE



333