

TAG	PART #	CFM	GPM	ZONE	COVEREDBY	SP	WEIGHT	VELOCITY	QTY	DESCRIPTION
P1	DW1829DWLT-2R-S	3400				-0.009	50.46	1924.01	1	DOUBLE WALL DUCT - 18" INNER DUCT, 29" LONG - 2 LAYERS REDUCED CLEARANCE - 22" STAINLESS STEEL OUTER SHELL.
P2	DW1847DWAJD-2R-S	3400				-0.009	107.98	1924.01	1	DOUBLE WALL ADJUSTABLE DUCT - 18" INNER DUCT - 2 LAYERS REDUCED CLEARANCE - 22" STAINLESS STEEL OUTER SHELL. MIN LENGTH = 11' / MAX LENGTH = 48.5' / ADJUSTMENT = 30.5' / ADJUSTABLE SECTION MAY NEED TO BE CUT. INCLUDES SINGLE AND DOUBLE WALL "V" CLAMPS.
P3	DW1890DWASY-2R-S	3400				-0.115	45.59	1924.01	1	DOUBLE WALL DUCT - 18" INNER 90 DUCT - 2 LAYERS REDUCED CLEARANCE - 22" STAINLESS STEEL OUTER SHELL.
P4	DW1801DWOFFSETASY-2R-S	3400				-0.003	14.66	1924.01	1	DOUBLE WALL DUCT - 18" INNER DUCT RISER & 1 DEGREE OFFSET - 2 LAYERS REDUCED CLEARANCE - 22" STAINLESS STEEL OUTER SHELL.
P5	DW1847DWAJD-2R-S	3400				-0.012	107.98	1924.01	1	DOUBLE WALL ADJUSTABLE DUCT - 18" INNER DUCT - 2 LAYERS REDUCED CLEARANCE - 22" STAINLESS STEEL OUTER SHELL. MIN LENGTH = 11' / MAX LENGTH = 48.5' / ADJUSTMENT = 30.5' / ADJUSTABLE SECTION MAY NEED TO BE CUT. INCLUDES SINGLE AND DOUBLE WALL "V" CLAMPS.
P6	DW1801DWOFFSETASY-2R-S	3400				-0.003	14.66	1924.01	1	DOUBLE WALL DUCT - 18" INNER DUCT RISER & 1 DEGREE OFFSET - 2 LAYERS REDUCED CLEARANCE - 22" STAINLESS STEEL OUTER SHELL.
P7 ASSEMBLED W/P8	DW18DWT EASY-2R-S	3400		1		-0.184	55.68	1924.01	1	DOUBLE WALL DUCT - 18" INNER TEE DUCT - 2 LAYERS REDUCED CLEARANCE - 22" STAINLESS STEEL OUTER SHELL.
P8 ASSEMBLED W/P7 D=S	DW18DWACCDORCOV-2R-S						26.16		1	DOUBLE WALL DUCT - 18" INNER ACCESS DOOR & 22" ACCESS DOOR COVER WITH CLAMPS - 2 LAYERS REDUCED CLEARANCE - 22" STAINLESS STEEL OUTER SHELL.
P9 ASSEMBLED W/P10	DW1835DWLTTP-2R-S	3400				-0.011	58.74	1924.01	1	DOUBLE WALL DUCT - 18" INNER DUCT, 35" LONG - 2 LAYERS REDUCED CLEARANCE - 22" STAINLESS STEEL OUTER SHELL - USED WITH TRANSITION PLATES
P10 ASSEMBLED W/P9	DW2618TPDBEX	3400					9.00	1924.01	1	DUCT TO CURB TRANSITION 3/4" DOWN TURN, 26 1/2" CURB TO 18" DUCT, 16 GA ALUMINIZED. USED ON NCA16FA / NCA16HPFA & NCA18FA / NCA18HPFA. TRANSITION PLATE OD IS 27.00" DESIGNED FOR USE WITH EXHAUST FAN. NON-STANDARD PART.
SYSTEM AT P10						-1.548	0.00			
P11	DW2226SADKIT						8.80		1	DUCT - HORIZONTAL SADDLE SUPPORT KIT, USED WITH 22" OD - INCLUDES UNI-STRUT CUT TO LENGTH, DW2226SAD, & HARDWARE BAG 4.
	3M-2000PLUS						0.80		3	DUCT - 3M FIRE BARRIER 2000 PLUS SILICONE - USED AS SEALANT TO SEAL DUCT JOINTS.
	DW18DWCLASY-2R-S						8.70		3	DUCT - 18" DUCT - 22" DOUBLE "V" CLAMP - 2R INSULATION & SINGLE "V" CLAMP INCLUDED - REDUCED CLEARANCE.
TOTAL WEIGHT							528.21			

- ALL DUCTWORK IS REQUIRED TO BE INSTALLED WITH THE MAXIMUM SUPPORT SPACING LISTED BELOW.
- FOR A COMPLETE LIST OF APPROVED SUPPORT METHODS, SEE THE ENTIRE INSTALLATION AND OPERATION MANUAL
- DUCTWORK SHALL SLOPE NOT LESS THAN 1/16" PER LINEAR FOOT TOWARDS THE HOOD OR AN APPROVED GREASE COLLECTION RESERVOIR.
- WHERE HORIZONTAL DUCTS EXCEED 75 FEET IN LENGTH, THE SLOPE SHALL NOT BE LESS THAN 3/16" PER LINEAR FOOT.

HORIZONTAL	
DUCT DIAMETER	SUPPORT SPACING (FT)
5'	7'
6'	7'
7'	7'
8'	7'
10'	7'
12'	7'
14'	7'
16'	7'
18'	5'
20'	5'
22'	5'
24'	5'
26'	5'
28'	5'
30'	5'
32'	5'
34'	5'
36'	5'

VERTICAL			
TYPE	WALL SUPPORT (FT)	CURB SUPPORT (FT)	FLOOR SUPPORT (FT)
2R & 2R HT (5'-16')	20'	24'	24'
2R (18')	18'	24'	24'
3R & 3Z (5'-24')	10'	24'	24'
3Z (26'- 36')	10'	20'	20'

Ductwork is responsibility of  
mechanical or general email [reg83@captiveaire.com](mailto:reg83@captiveaire.com) for pricing

NOTE: UNLESS OTHERWISE STATED, PANDA RESTAURANT GROUP SHALL PROVIDE ALL EQUIPMENT ON THE FOLLOWING CAPTIVEAIRE SHEETS, INCLUDING HOODS, FIRE SYSTEM, EXHAUST FANS, SUPPLY FAN, BATHROOM FAN AND ELECTRICAL INTERLOCK PACKAGE
DOUBLE WALL DUCT BY MECHANICAL PLEASE USE CONTACT BELOW FOR PRICING
<b>ANSUL GAS VALVE:</b>
THE ANSUL GAS VALVE IS PROVIDED BY CAPTIVEAIRE SYSTEMS. CONTACT OUR OFFICE WITH THE VALVE SIZE 3 DAYS IN ADVANCE, WHEN IT IS NEEDED ON SITE.
FOR QUESTIONS CALL THE CAPTIVEAIRE SOUTHERN CA NATIONAL ACCOUNTS OFFICE 3002 BOW AVENUE, SUITE 410 TUSTIN, CA 92780 TEL: 714-677-2963 EMAIL: REG83@CAPTIVEAIRE.COM

# CAPTIVE

## Southern CA National Accounts

3002 Dow Ave., Suite 410, Tustin, CA. 92780 PHONE: (714) 677-2983 EMAIL: reg83@captiveaire.com

[www.captiveaire.com](http://www.captiveaire.com)

**REVISIONS**

DESCRIPTION	DATE:
△	
△	
△	
△	
△	



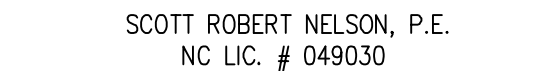




All ideas, designs, arrangement and plans indicated or represented by this drawing are the property of Panda Express Inc. and were created for use on this specific project. None of these ideas, designs, arrangements or plans may be used by or disclosed to any person, firm, or corporation without the written permission of Panda Express Inc.


CHECK SET	04-20-23
BID/PERMIT SET	06-01-23

PANDA PROJECT #: D24956  
PANDA STORE #: TBD  
ARCH PROJECT #: 239201



PANDA HOME 2600  
450 Kannapolis Parkway  
Concord, NC 28027

HOOD DETAIL PLAN

PANDA HOME 2600 R3