

CORNER RECORD

Agency Index

BOOK 105 PAGE 79

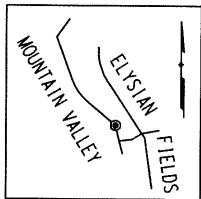
Document Number

CR 10995

City of OAKLANDCounty of ALAMEDA, California

Brief Legal Description

CITY OF OAKLAND MONUMENT AS SHOWN UPON MONUMENT MAP 1527B464_106 AND TRACT 3747 (93-MAPS-52) SOUTHEASTERLY OF 61 MOUNTAIN VALLEY (APN 48-6435-41).



CORNER TYPE

Government Corner ☐ Control
Meander ☐ Property
Rancho ☐ Other

Date of Survey 1/29/2018

COORDINATES (Optional)

N. 2106234.2 ± E. 6090604.4 ±

☒ Elevation
☐ Units Metric ☐ U.S. Survey Foot ☒
☐ Horizontal Datum CCS 83
Zone 3 Epoch Date
Vertical Datum

☐ Complies with Public Resources Code §§8801-8819
☐ Complies with Public Resources Code §§8890-8902

PLS Act Ref: ☐ 8765(d) ☒ 8771 ☐ 8773 ☐ Other:

Corner/
Monument: ☒ Left as found ☐ Established ☐ Rebuilt ☒ Pre-Construction
☐ Found and tagged ☐ Reestablished ☒ Referenced ☐ Post-Construction

Narrative of corner identified and monument as found, set, reset, replaced, or removed:

☒ See sheet #2 for description (s):

FOUND MONUMENT THAT COULD BE DAMAGED OR DESTROYED BY A PROPOSED GAS LINE CONSTRUCTION PROJECT. MONUMENT WAS REFERENCED AS SHOWN ON PAGE 2 OF 2.

THE PURPOSE OF THIS CORNER RECORD IS TO PRESERVE THE LOCATION OF THE MONUMENT PRIOR TO CONSTRUCTION. NO ATTEMPT WAS MADE TO DETERMINE THE RELATIONSHIP BETWEEN THE MONUMENT AND PROPERTY LINES, RIGHT-OF-WAY LINES, CENTERLINES OR OTHER MONUMENTS.

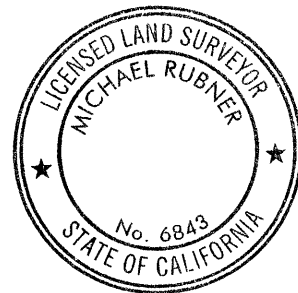
FOUND WELL MONUMENT RIM 4" BELOW A.C. FINISH SURFACE WITH NO LID.

SURVEYOR'S STATEMENT

This Corner Record was prepared by me or under my direction in conformance with
the Professional Land Surveyors' Act on MARCH 6, 2018

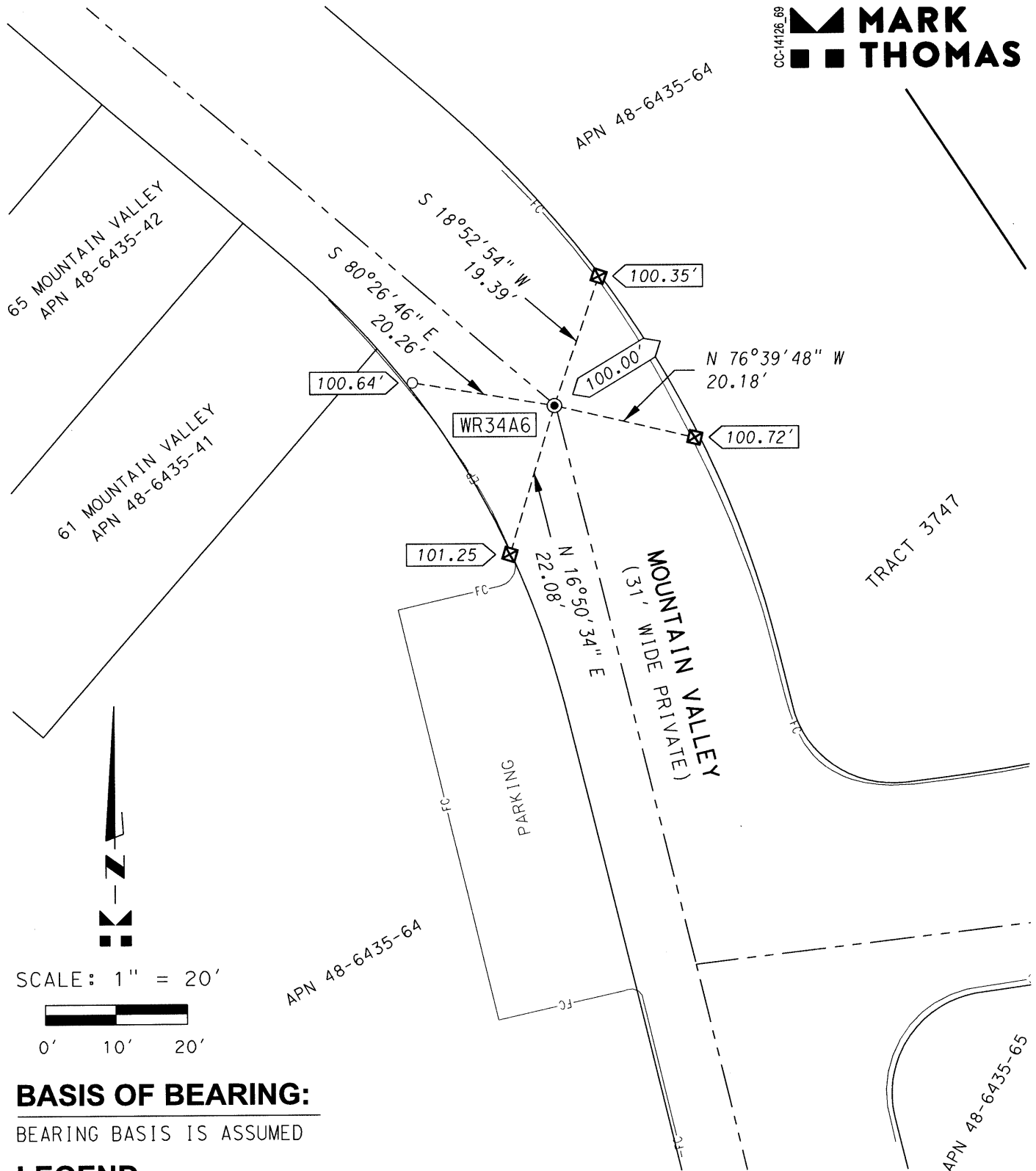
Signed E.P.K. P.L.S. or R.C.E. No. 8911

COUNTY SURVEYOR'S STATEMENT

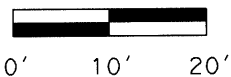
This Corner Record was received 30 JANUARY 2018and examined and filed 21 MARCH 2018Signed Michael Rubner P.L.S. or R.C.E. No. 6843Title COUNTY SURVEYOR

County Surveyor's Comment _____

CC-14126_B9
 **MARK THOMAS**



SCALE: 1" = 20'



BASIS OF BEARING:

BEARING BASIS IS ASSUMED

LEGEND:

- FOUND 2.5" BRASS DISK STAMPED RCE 9821 SET IN CONCRETE IN WELL (4" BELOW A.C.)
- ☒ SET CUT CROSS FOR REFERENCE POINT IN TOP OF CONCRETE CURB
- SET MAG NAIL FOR REFERENCE POINT IN A.C. (COUNTERSUNK)

100.00' MONUMENT ELEVATION (ASSUMED)

XXX.XX' REFERENCE POINT ELEVATION (ESTABLISHED USING A DIGITAL LEVEL)

WR34A6 ALAMEDA COUNTY MONUMENT IDENTIFICATION NUMBER