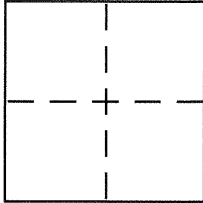


CORNER RECORDDocument Number CR 4197City of BERKELEYCounty of ALAMEDA, CaliforniaBrief Legal Description CITY OF BERKELEY MONUMENT B0495**CORNER TYPE**

Government Corner ☐ Control ☒
 Meander ☐ Property ☐
 Rancho ☐ Other ☐
 Date of Survey 5-28-2010

COORDINATES (Optional)

N. _____
 E. _____
 Zone _____ NAD27 ☐ NAD83 ☐
 NAD83 Epoch _____
 Elev. _____
 Vert. Datum: NGVD29 ☐ NAVD88 ☐
 Meas. Units: Metric ☐ Imperial ☐

Corner - Left as found ☒ Found and tagged ☐ Established ☐ Reestablished ☐ Rebuilt ☐

Identification and type of corner found: Evidence used to identify or procedure used to establish or reestablish the corner:

IN COMPLIANCE WITH SECTION 8771 OF THE PROFESSIONAL LAND

SURVEYORS' ACT, THIS CORNER RECORD IS BEING FILED TO ESTABLISH
THE POSITION OF AN EXISTING MONUMENT PRIOR TO STREET
CONSTRUCTION. (SEE PAGE 2)

A description of the physical condition of the monument as found and as set or reset:

CITY OF BERKELEY STANDARD WELL-TYPE MONUMENT, FOUND IN
GOOD CONDITION

SURVEYOR'S STATEMENT

This Corner Record was prepared by me or under my direction in conformance with
 the Land Surveyors Act on MAY 28 2010

Signed [Signature] P.L.S or R.C.E. No. PLS 5003

COUNTY SURVEYOR'S STATEMENT

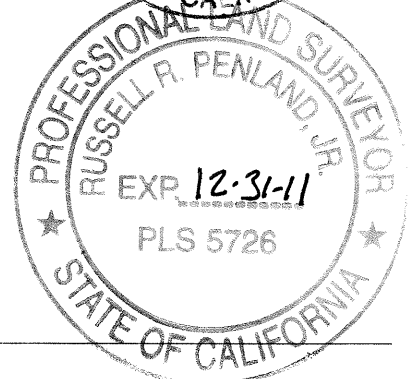
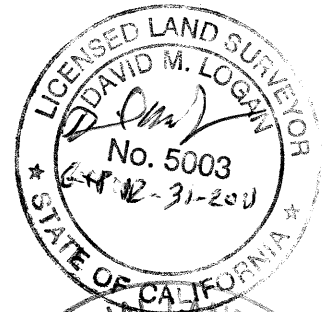
This Corner Record was received 6-21-10

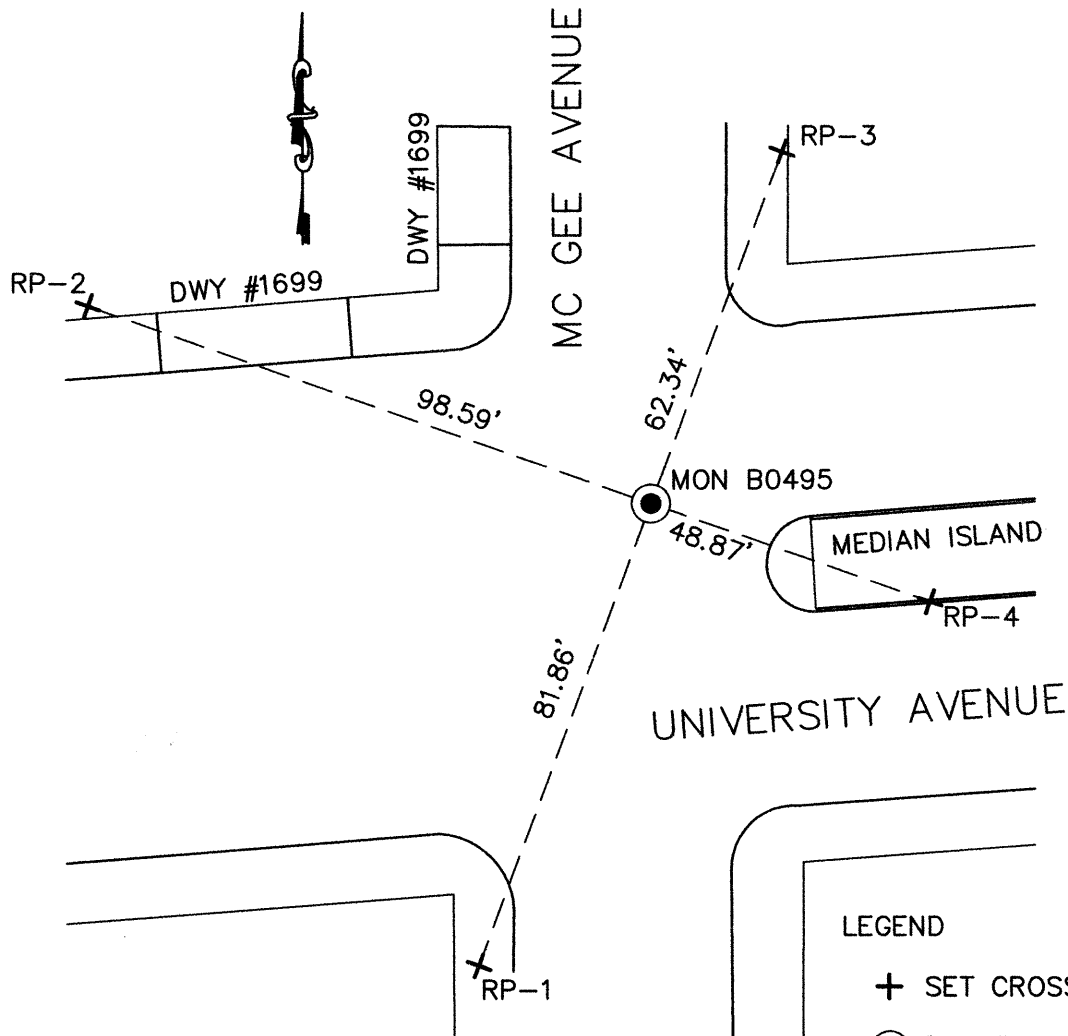
and examined and filed 7-5-10

Signed [Signature] P.L.S or R.C.E. No. 5726

Title COUNTY SURVEYOR

County Surveyor's Comment _____





NOTE:
 THE EXISTING MONUMENT AS
 SHOWN ~~IS~~ REFERENCED BY
 STRAIGHT LINES BETWEEN
 RP-1 TO RP-3 AND RP-2 TO
 RP-4.

LEGEND

- + SET CROSS IN CONCRETE
- FOUND BRASS DISK IN A WELL-TYPE CASING