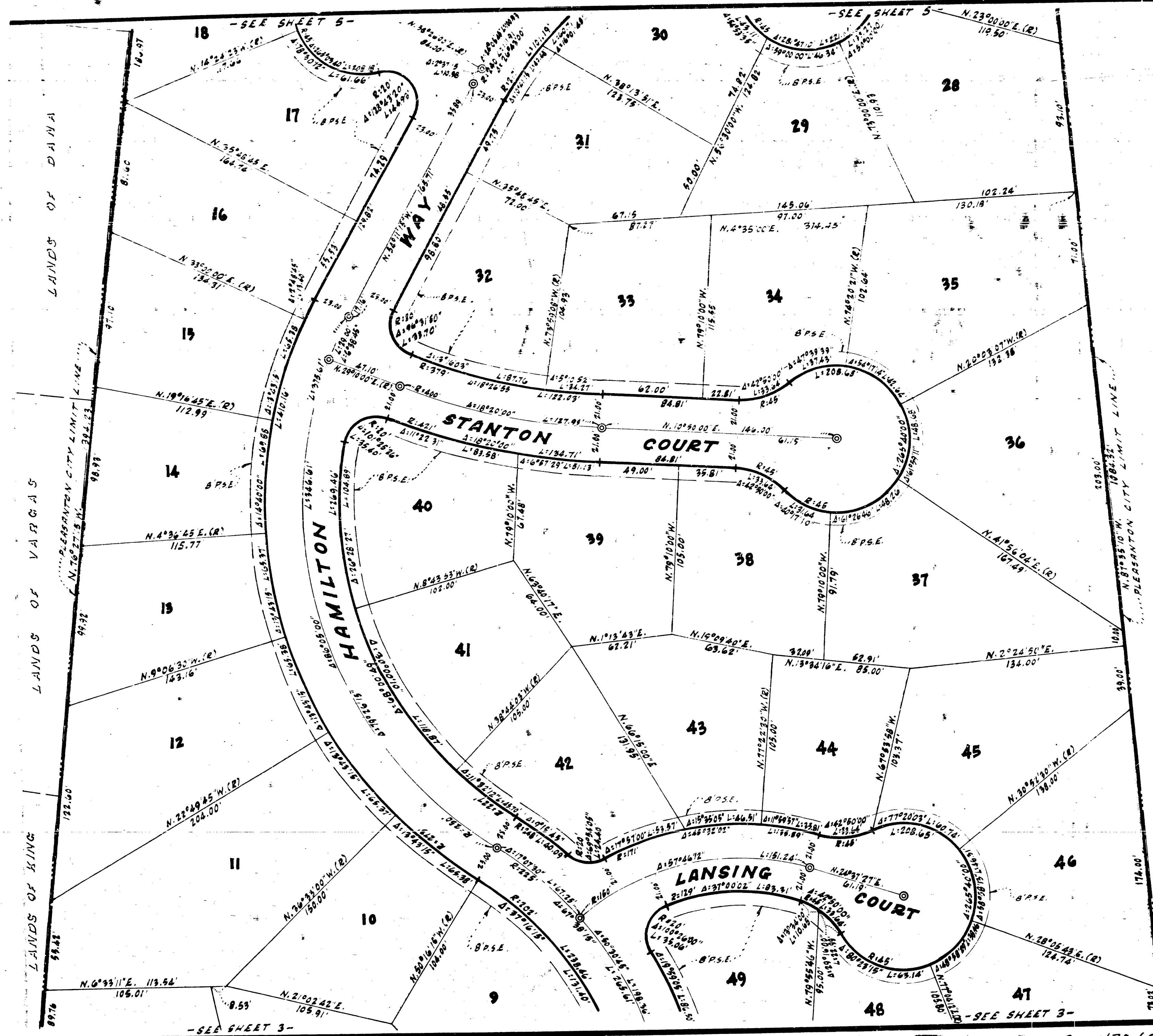


50-1820

50-18-20



BASIS OF BEARINGS NOTES & LEGEND

The bearing of N. 15° 00' 00" E. along the Easterly line of lots 13 & 14 as said lots are shown on that certain Map entitled "PLEASANTON TRACT," filed for record in Bk. 16 of Maps at Page 72 Alameda County Records was taken as the Basis of Bearings as shown hereon.

All distances & dimensions are expressed in feet & decimals thereof.

The blue border indicates the boundary of land subdivided by this map.

Building setback lines to be as required by the zoning ordinance of the City of Pleasanton.

The side lot lines will be marked by an appropriate mark on the back of the sidewalk at the front lot line.

- ⊙ = Indicates City Monument Found.
- ⊙ = Indicates City Monument to be set.
- = Indicates 3/4" I.P. found or as otherwise noted.
- = Indicates 3/4" I.P. to be set.
- P.S.E. = Public Service Easement.
- Δ = Indicates Angle Point.

This is a copy of a map on file in the Recorder's Office of Alameda County. No representation of any kind is made as to the accuracy of the original official map from which this is copied, and this copy carries with it no representation of any kind other than that it is a copy.

Any questions concerning this map should be directed to the Recorder's Office of Alameda County.
DIETRICH POST COMPANY

25B2650M

TRACT 2659 "ROSEPOINTE" CITY OF PLEASANTON ALAMEDA COUNTY, CALIFORNIA

SCALE: 1"=40'

JANUARY 1965

MACKAY & SOMPS

CIVIL ENGINEERS - PLEASANTON

17140

1667

SHEET 4 OF 5 SHEETS

AX 47069 FILED APRIL 7, 1965 BOOK 50 PAGES 18 to 20

477