

RECORD OF SURVEY

BEING ALL THAT LAND DESCRIBED IN THAT
CERTAIN GRANT DEED RECORDED APRIL 11, 2006
AS DOCUMENT NUMBER 18880749, BEING IN THE

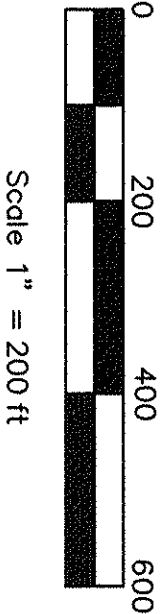
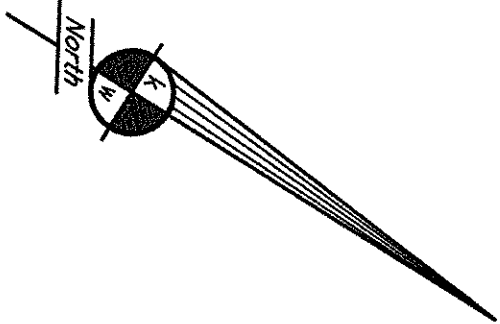
UNINCORPORATED AREA OF
COUNTY OF SANTA CLARA
STATE OF CALIFORNIA

SCALE: 1" = 200' DECEMBER, 2006
CONSISTING OF 6 SHEETS

KIER & WRIGHT
CIVIL ENGINEERS & SURVEYORS, INC.
3350 Scott Boulevard, Building 22 (408) 727-6665
Santa Clara, California 95054 FAX (408) 727-5641

REFERENCES

- 1 GRANT DEED (DOC. NO. 18880749)
- 2 ELIZABETH-H-MARTIN-TRACT (F M 31)
- 3 GRANT DEED (DOC. NO. 14399930)
- 4 GRANT DEED (DOC. NO. 18644551)
- 5 QUITCLAIM DEED (DOC. NO. 18765243)
- 6 INDIVIDUAL QUITCLAIM DEED (DOC. NO. 18145718)
- 7 RECORD OF SURVEY (544 M 53)
- 8 PARCEL MAP (653 M 6 & 7)
- 9 RECORD OF SURVEY (609 M 15 & 16)
- 10 RECORD OF SURVEY (483 M 16)
- 11 RECORD OF SURVEY (580 M 42)
- 12 TRACT MAP NO. 7190 (498 M 47-49)
- 13 PARCEL MAP (637 M 2-4)



Scale 1" = 200 ft

LEGEND

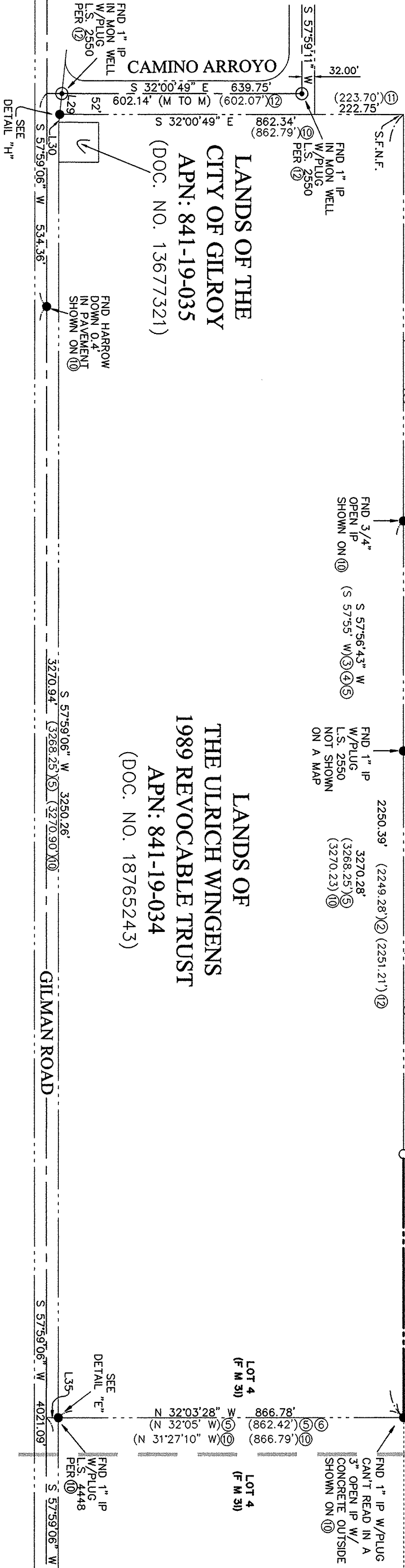
- PROPERTY LINE
- ADJACENT PROPERTY LINE
- EASEMENT LINE
- CALCULATED TIE
- FOUND IRON PIPE AS NOTED
- SET 3/4" IP & PLASTIC PLUG L.S. 8134
- OR AS NOTED
- SET 3/4" IP & PLASTIC PLUG AND TACK
- KIER & WRIGHT CONTROL POINT
- FND MON AS NOTED
- RECORD INFORMATION
- SEARCHED FOR NOT FOUND
- REFERENCE NUMBER
- UNKNOWN ORIGIN
- COUNTY OF SANTA CLARA
- ROAD COMMISSION
- C.O.S.C.R.C.
- (213.50') S.F.N.F. U.O.
- (3) (3)

LANDS OF
ULRICH WINGENS & EVA MERG
APN: 841-19-033
(DOC. NO. 14399930)

LANDS OF
GILROY INVESTMENT
GROUP (GIG) LLC
APN: 841-19-008
(DOC. NO. 18644551)

LANDS OF THE
CITY OF GILROY
APN: 841-19-035
(DOC. NO. 13677321)

LANDS OF
THE ULRICH WINGENS
1989 REVOCABLE TRUST
APN: 841-19-034
(DOC. NO. 18765243)



SEE SHEET 3

SEE SHEET 2

PARCEL ONE
(DOC. NO. 18880749)
AREA 95.188 ± ACRES

PARCEL FOUR
(DOC. NO. 18880749)
AREA 21.217 ± ACRES

SEE SHEET 5

CURVE TABLE:				
CURVE	RADIUS	DELTA	LENGTH	
C1	750.00'	22°40'33"	296.83'	
C2	750.00'	12°26'32"	162.87'	
C3	450.00'	1°09'14"	9.06'	
C4	450.00'	5°02'52"	39.64'	
C5	(450.00')	5°00'57"	39.39'	
C6	650.00'	25°57'41"	294.32'	
	450.00'	4°26'59"	34.95'	

LINE TABLE:		
LINE	BEARING	DISTANCE
L1	N 64°40'00" E	334.12'
L2	(N 65°18'14" E 334.13') (2)	
L3	S 57°56'43" W	163.18'
L4	(S 58°32'50" W 163.18') (1)	
L5	N 25°20'00" W	30.00'
L6	S 00°52'40" W	240.59'
L7	S 00°18'00" W	27.73'
L8	(S 00°18'00" W 27.73') (1)	
L9	(S 00°18'00" W 27.73') (1)	
L10	(S 00°18'00" W 27.73') (1)	
L11	(S 00°18'00" W 27.73') (1)	
L12	(S 00°18'00" W 27.73') (1)	
L13	(S 00°18'00" W 27.73') (1)	
L14	(S 00°18'00" W 27.73') (1)	
L15	(S 00°18'00" W 27.73') (1)	
L16	(S 00°18'00" W 27.73') (1)	
L17	(S 00°18'00" W 27.73') (1)	
L18	(S 00°18'00" W 27.73') (1)	
L19	(S 00°18'00" W 27.73') (1)	
L20	(S 00°18'00" W 27.73') (1)	
L21	(S 00°18'00" W 27.73') (1)	
L22	(S 00°18'00" W 27.73') (1)	
L23	(S 00°18'00" W 27.73') (1)	
L24	(S 00°18'00" W 27.73') (1)	
L25	(S 00°18'00" W 27.73') (1)	
L26	(S 00°18'00" W 27.73') (1)	
L27	(S 00°18'00" W 27.73') (1)	
L28	(S 00°18'00" W 27.73') (1)	
L29	(S 00°18'00" W 27.73') (1)	
L30	(S 00°18'00" W 27.73') (1)	
L31	(S 00°18'00" W 27.73') (1)	
L32	(S 00°18'00" W 27.73') (1)	
L33	(S 00°18'00" W 27.73') (1)	
L34	(S 00°18'00" W 27.73') (1)	
L35	(S 00°18'00" W 27.73') (1)	
L36	(S 00°18'00" W 27.73') (1)	
L37	(S 00°18'00" W 27.73') (1)	
L38	(S 00°18'00" W 27.73') (1)	
L39	(S 00°18'00" W 27.73') (1)	
L40	(S 00°18'00" W 27.73') (1)	
L41	(S 00°18'00" W 27.73') (1)	

19 23 8310

19