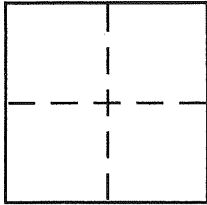


**CORNER RECORD**Document Number CR 1912  
City of FREMONT County of ALAMEDA, CaliforniaBrief Legal Description BRASS DISK MONUMENT - CUSHING PARKWAY AND NORTHPORT LOOP WEST AS SHOWN ON THAT CERTAIN PARCEL MAP 5001, (168 M 24-26)**CORNER TYPE**

Government Corner ☐ Control ☐  
 Meander ☐ Property ☐  
 Rancho ☐ Other ☒  
 Date of Survey 6-3-02

**COORDINATES (Optional)**

N. \_\_\_\_\_  
 E. \_\_\_\_\_  
 Zone \_\_\_\_\_ NAD27 ☐ NAD83 ☐  
 NAD83 Epoch \_\_\_\_\_  
 Elev. \_\_\_\_\_  
 Vert. Datum: NGVD29 ☐ NAVD88 ☐  
 Meas. Units: Metric ☐ Imperial ☐

Corner - Left as found ☐ Found and tagged ☐ Established ☐ Reestablished ☒ Rebuilt ☐

Identification and type of corner found: Evidence used to identify or procedure used to establish or reestablish the corner:  
REESTABLISHED CITY MONUMENT USING FOUND REFERENCE POINTS  
AND FIELD NOTES PROVIDED TO US BY OVERLAND CONTRACTING  
INC.

A description of the physical condition of the monument as found and as set or reset:  
SET 2 1/2" BRASS DISK IN MONUMENT BOX, STAMPED "CITY  
OF FREMONT" L.S. 6256

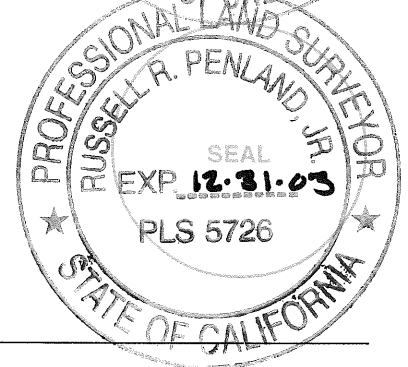
**SURVEYOR'S STATEMENT**

This Corner Record was prepared by me or under my direction in conformance with  
 the Land Surveyor's Act on JULY 14, 2003  
 Signed J. R. Vigil (P.L.S. or R.C.E. No. 6256)

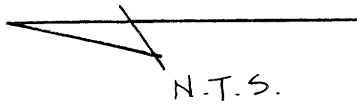
**COUNTY SURVEYOR'S STATEMENT**

This Corner Record was received 7-15-03  
 and examined and filed 8-27-03  
 Signed Russell R. Penland, Jr. P.L.S. or R.C.E. No. 5726  
 Title COUNTY SURVEYOR

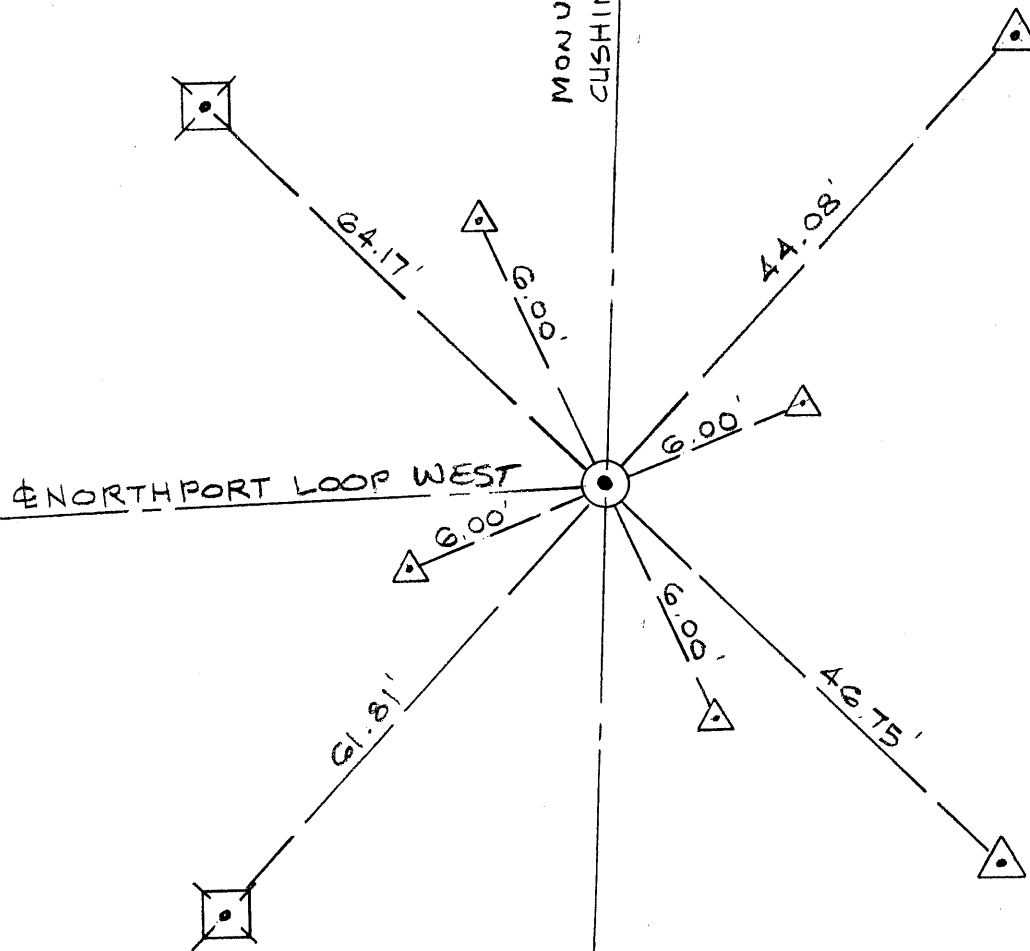
County Surveyor's Comment \_\_\_\_\_



NORTHPORT LOOP EAST



MONUMENT LINE  
CUSHING PARKWAY



### LEGEND

- ⊙ = 2 1/2" BRASS DISK MONUMENT SET LS 6256, CITY OF FREMONT
- △ = FOUND REFERENCE POINT, PK NAIL
- ⊠ = FOUND REFERENCE POINT, SCRIBED "X"