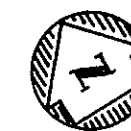
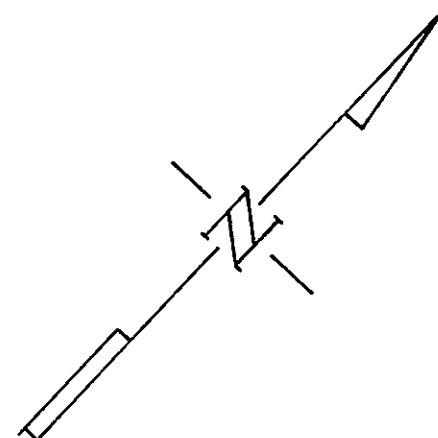


# TRACT 2553

PLEASANTON TOWNSHIP, ALAMEDA COUNTY, CALIFORNIA  
IN THE UNINCORPORATED TERRITORY IN THE COUNTY OF ALAMEDA

KENNETH Q. VOLK & ASSOCIATES—CONSULTING ENGINEERS

MAY 1965

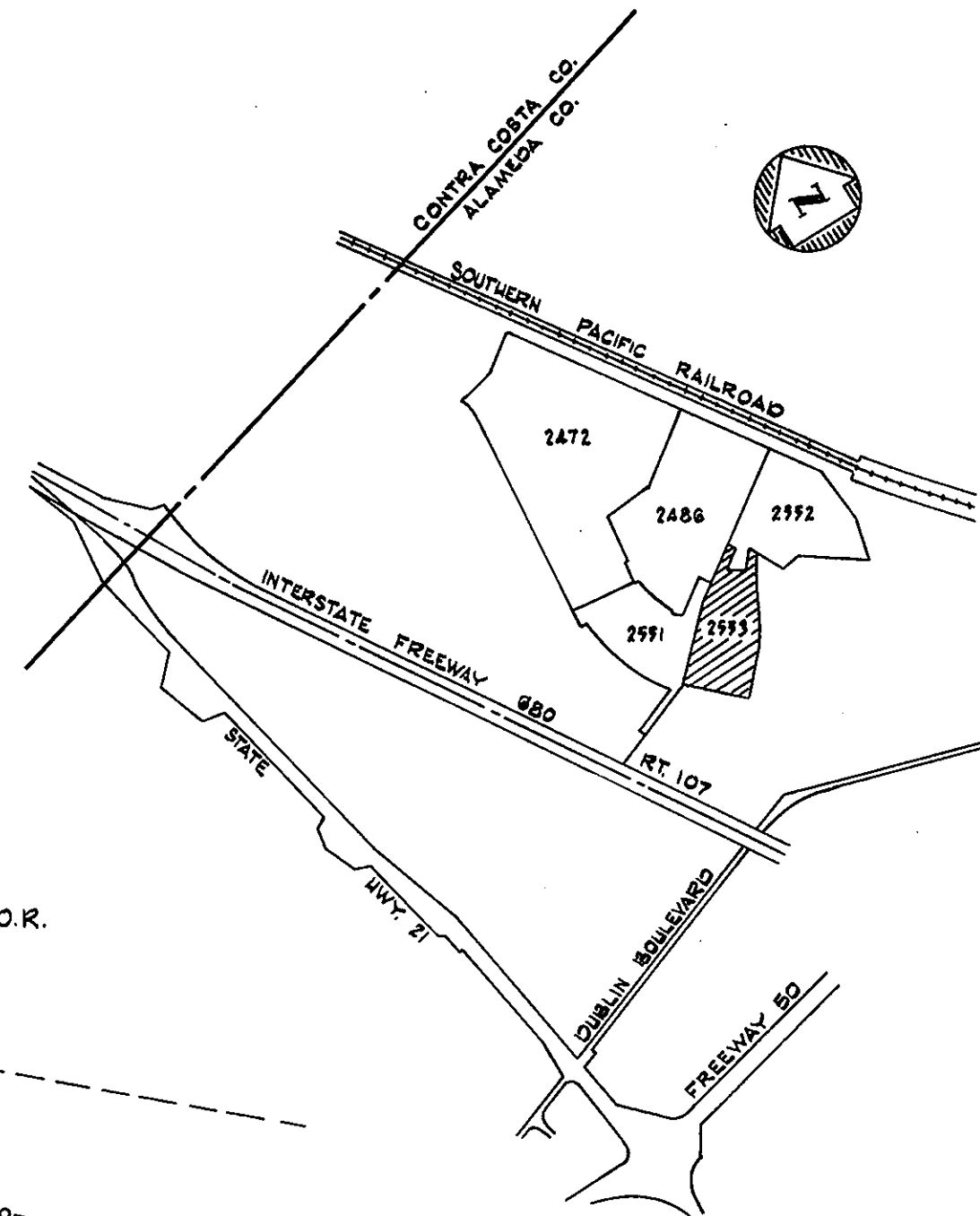
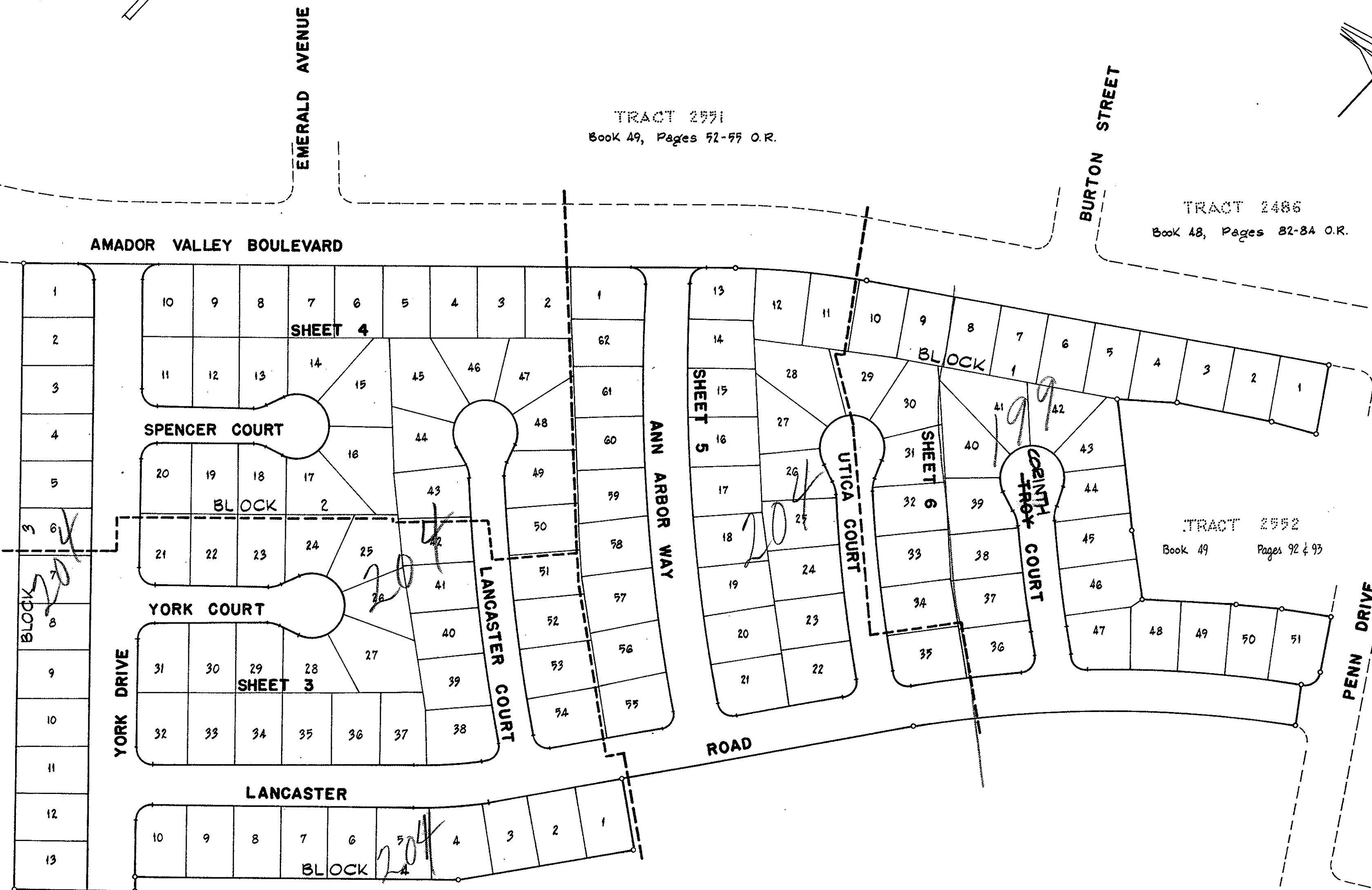


TRACT 2551  
Book 49, Pages 52-55 O.R.

TRACT 2486  
Book 48, Pages 82-84 O.R.

TRACT 2552  
Book 49, Pages 92 & 93

LANDS OF VOLK-McLAIN COMMUNITIES, INC.



VICINITY MAP  
SCALE: 1" = 2000'

### BASIS OF BEARINGS

THE BEARING OF THE LINE BETWEEN THE MONUMENTS AT THE INTERSECTIONS OF BURTON STREET AND BRIGHTON DRIVE WITH AMADOR VALLEY BOULEVARD AS SAID MONUMENTS ARE SHOWN UPON THE MAP OF TRACT 2486, PLEASANTON TOWNSHIP, ALAMEDA COUNTY, CALIFORNIA, IS TAKEN AS N. 55° 09' 54" E.

### BUILDING SETBACK

BUILDING SETBACK LINES TO BE AS REQUIRED BY THE ORDINANCE CODE OF THE COUNTY OF ALAMEDA TITLE 9, CHAPTER 2, AND AMMENDMENTS THERETO.

### NOTE

ALL DISTANCES SHOWN UPON THESE MAPS ARE GROUND DISTANCES. MULTIPLY GROUND DISTANCE BY .9999075

This is a copy of a map on file in the Recorder's Office of Alameda County. No representation of any kind is made as to the accuracy of the original official map from which this is copied, and this copy carries with it no representation of any kind other than that it is a copy.

Any questions concerning this map should be directed to the Recorder's Office of Alameda County.  
DIETERICH POST COMPANY

KING DRIVE

RECEIVED  
JUN 8 1965

COUNTY ASSessor

TRACT  
2553