
 <b>The Nau Company</b> Consulting Civil Engineers PO Box 810 Rolesville, NC 27571 919-435-6395 NCBELS License P-0751		CLIENT:  MOUNT OAK CAPITAL, LLC 500 6TH STREET SAN ANTONIO, TX 78215	
REVISIONS		TOWN COMMENTS	
		1	2023-10-16
<b>DUNKIN'</b>  1400 WESTERN BOULEVARD TARBORO, NC		<b>SITE PLAN</b>	
			
PROJECT NO: ---			
DESIGN BY: JJB			
DRAWN BY: JJB			
SCALE: 1"=20'			
DATE: 2023-08-30			
SHEET NO: C2.0			





Luminaire Schedule								
Symbol	Qty	Label	Arrangement	Description	LLF	Luminaire Lumens	Luminaire Watts	Total Watts
	6	P4	Single	PRV-C40-D-UNV-T4-BZ-HSS	1.000	15518	131	786

Calculation Summary								
Label	CalcType	Units	Avg	Max	Min	Avg/Min	Max/Min	
PARKING LOT	Illuminance	Fc	3.10	4.9	1.3	2.38	3.77	
PROPERTY LINE	Illuminance	Fc	1.81	3.4	0.2	9.05	17.00	

Luminaires & Lamps Furnished By Villa Lighting Inc. St Louis, MO. 63103  
 (800)325-0693  
 www.villalighting.com

GC to field verify ceiling heights for stem/cord mounted fixtures.

Refer to architectural interior elevations for fixture mounting heights.

The electrical contractor shall be responsible for receiving, storage, installation and wiring of light fixtures.

The electrical contractor shall report any damaged light fixtures or missing parts to Villa Lighting within 48 hours of receipt of light fixture package.

Design is based on current information provided at the time of request. Any changes in mounting height, mounting location, lamp wattage, lamp type, and existing field conditions that effect any of the previously mentioned will void the current layout and require a change request and recalculation. Calculations are based upon a computer simulation and actual field calculations may vary.

Fixtures mounted on 20' pole & 3' base  
 Light level calculated on the ground

Revisions		Comments
#	Date	

Drawn By:	Checked By:	Date:
		10/20/2023

Dunkin Donuts	TARBORO, NC
---------------	-------------





- COLORS:

**NOTE:**  
SEE DUNKIN' BRANDS WEBSITE, <http://extranet.dunkinbrands.com>,  
FOR COMPLETE INFORMATION AND DETAILS

## 2 DIRECTIONAL SIGNAGE

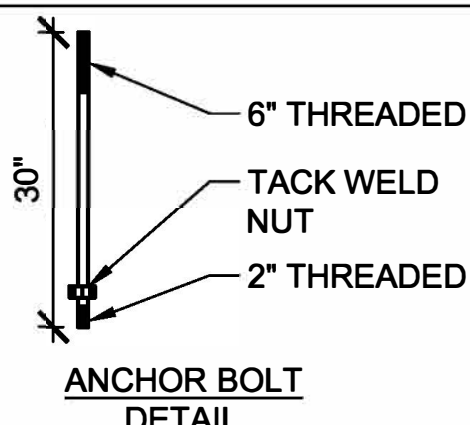
## NOTICE TO CONTRACTOR

**GC SHALL COORDINATE WITH TENANT'S FIELD REPRESENTATIVE AND LANDLORD'S GC REGARDING FINAL LOCATION AND COORDINATION OF INSTALL FOR ALL SITE ELEMENTS**



- NOTES:**
1. GC SHALL PROVIDE PVC CONDUIT FOR ALL NEW LOCATIONS; SAW-CUT AT EXISTING LOCATION WHERE NECESSARY.
  2. SEE ADDSR WEBSITE, [www.odrus.com/extranet](http://www.odrus.com/extranet), FOR COMPLETE INSTALLATION INFORMATION AND DETAILS.

**FOUNDATION:**  
ASTM A615 GR 60 REBAR  
3000 PSI CONCRETE @ 28 DAYS  
CLASS 5 SOIL  
1500 PSF SOIL BEARING  
100 PSF/ LF SOIL LATERAL BEARING  
UNDISTURBED SOIL



- (4) ANCHOR RODS WITH DOUBLE NUTS EMBEDDED BOLTS ON 6" X 6" SQUARE PATTERN.
  - REFER TO WIND SPEED TABLE (BELOW) FOR ANCHOR BOLTS REQUIRED.
- VERTICAL REINFORCEMENT.
  - REFER TO WIND SPEED TABLE (BELOW) FOR VERTICAL BARS REQUIRED.
- HORIZONTAL TIE REINFORCEMENT
  - REFER TO WIND SPEED TABLE (BELOW) FOR HORIZONTAL TIES REQUIRED.
  - (MAINTAIN MIN. 3" COVER)
- DRILLED, CAST-IN-PLACE, CONCRETE PIER

**4 DIGITAL MENU BOARD**  
SCALE: N.T.S.

dukin' brands<sup>sm</sup>

C + H ARCHITECTS, P.C.

50 OLD HICKORY BLVD.,  
SUITE 150-2  
BRENTWOOD, TN 37027

**p|615.377.3111**

**www.EandHArch.com**

# h+ ARCHITECTS

[illegible]

**1402 WESTERN BOULEVARD  
TARBORO, NORTH CAROLINA**

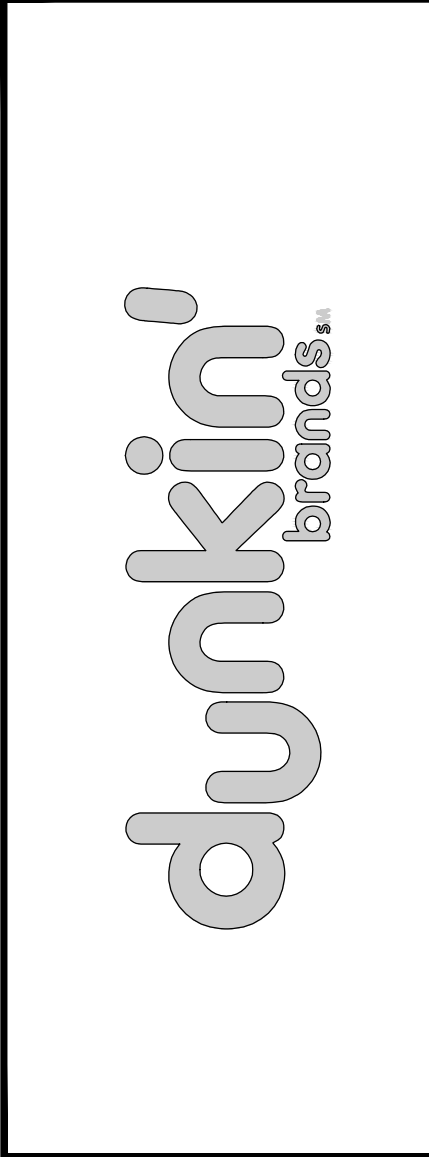
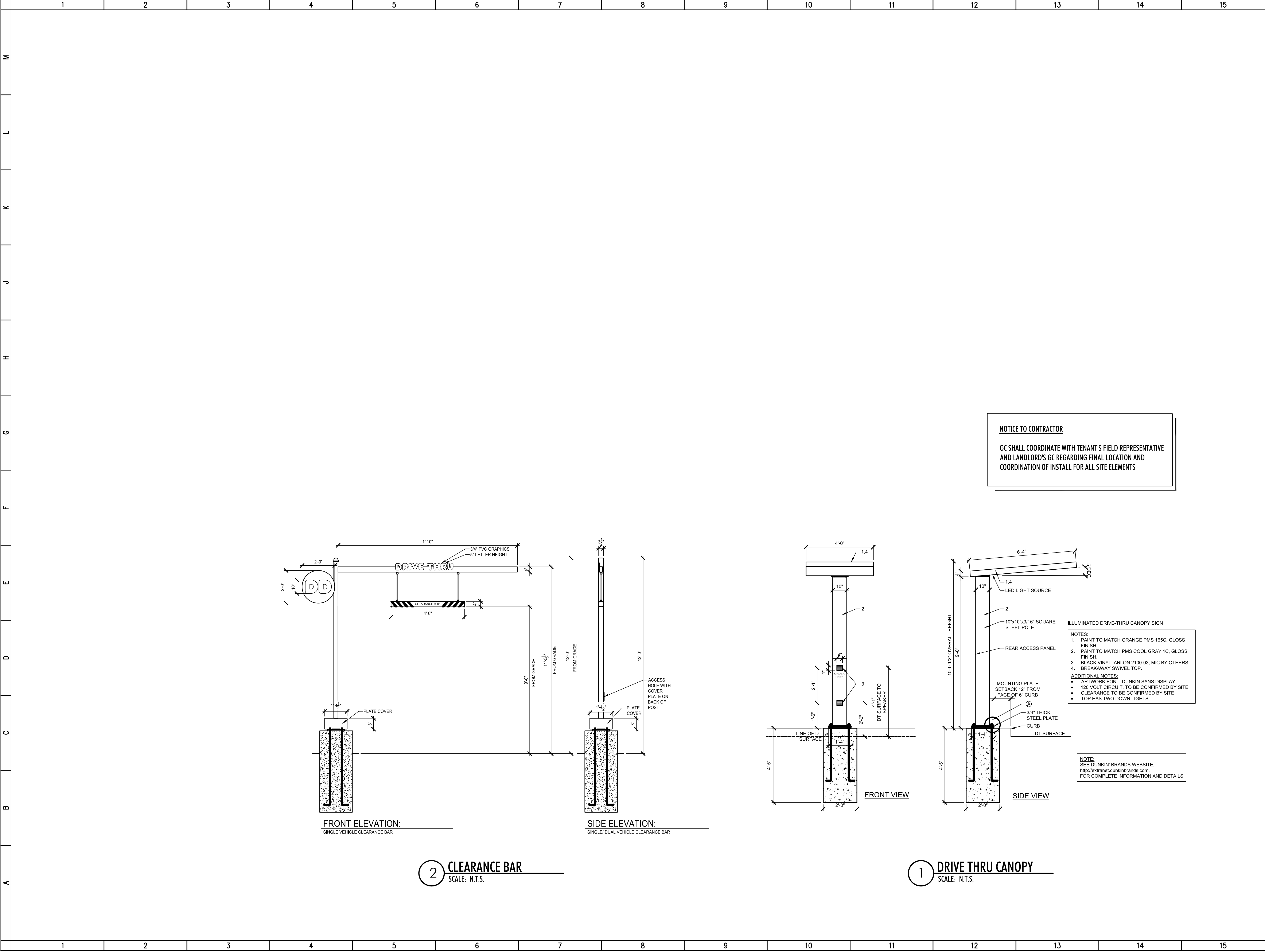
## SITE ELEMENTS

PC #365111



# AS1.0





E + H ARCHITECTS, P.C.  
750 OLD HICKORY BLVD.,  
SUITE 150-2  
BRENTWOOD, TN 37027  
p615.377.3111  
www.EandHArch.com

**E + H ARCHITECTS**

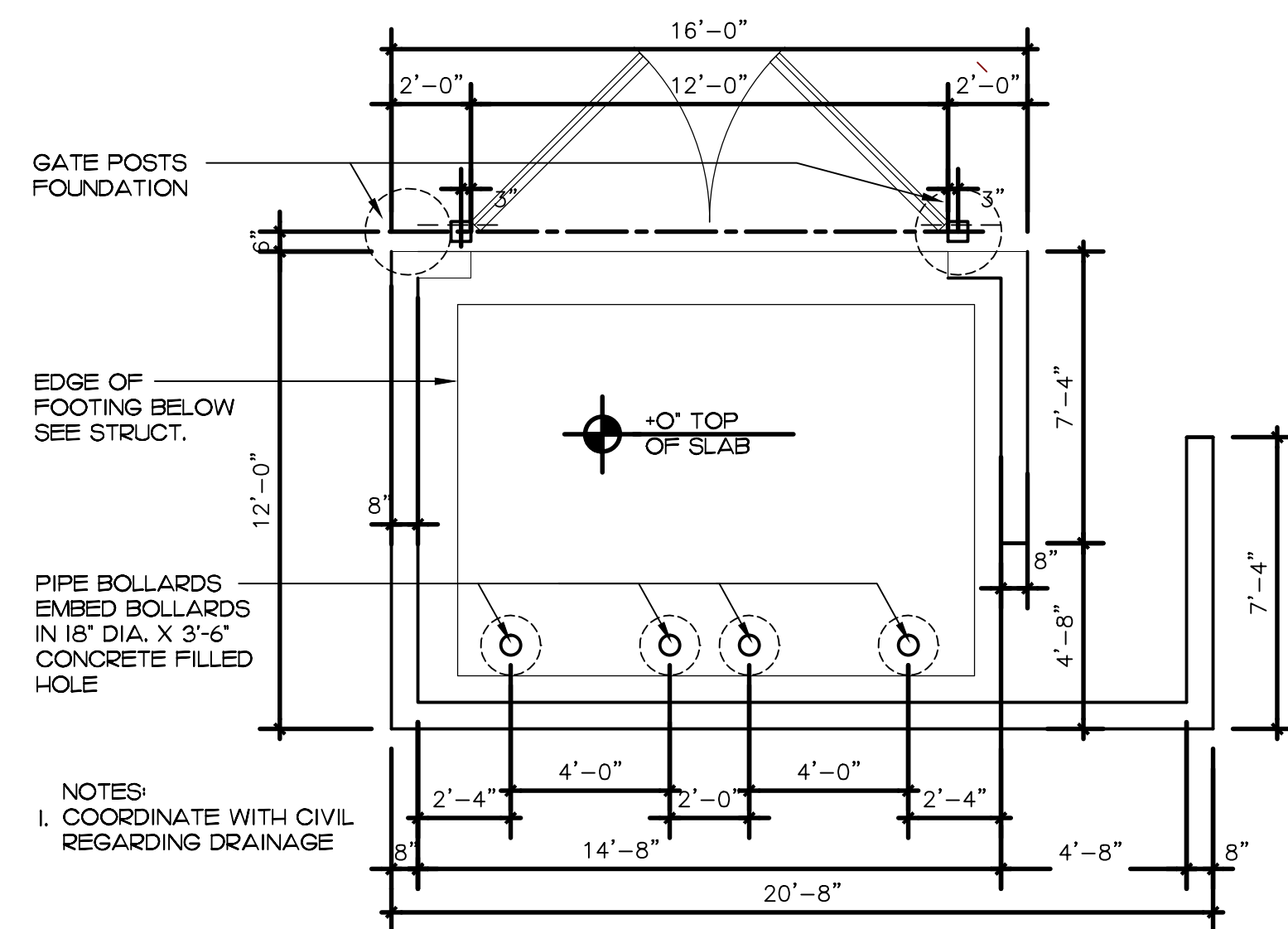
NO	DESCRIPTION	DATE
	REVISIONS	

1402 WESTERN BOULEVARD  
TARBORO, NORTH CAROLINA

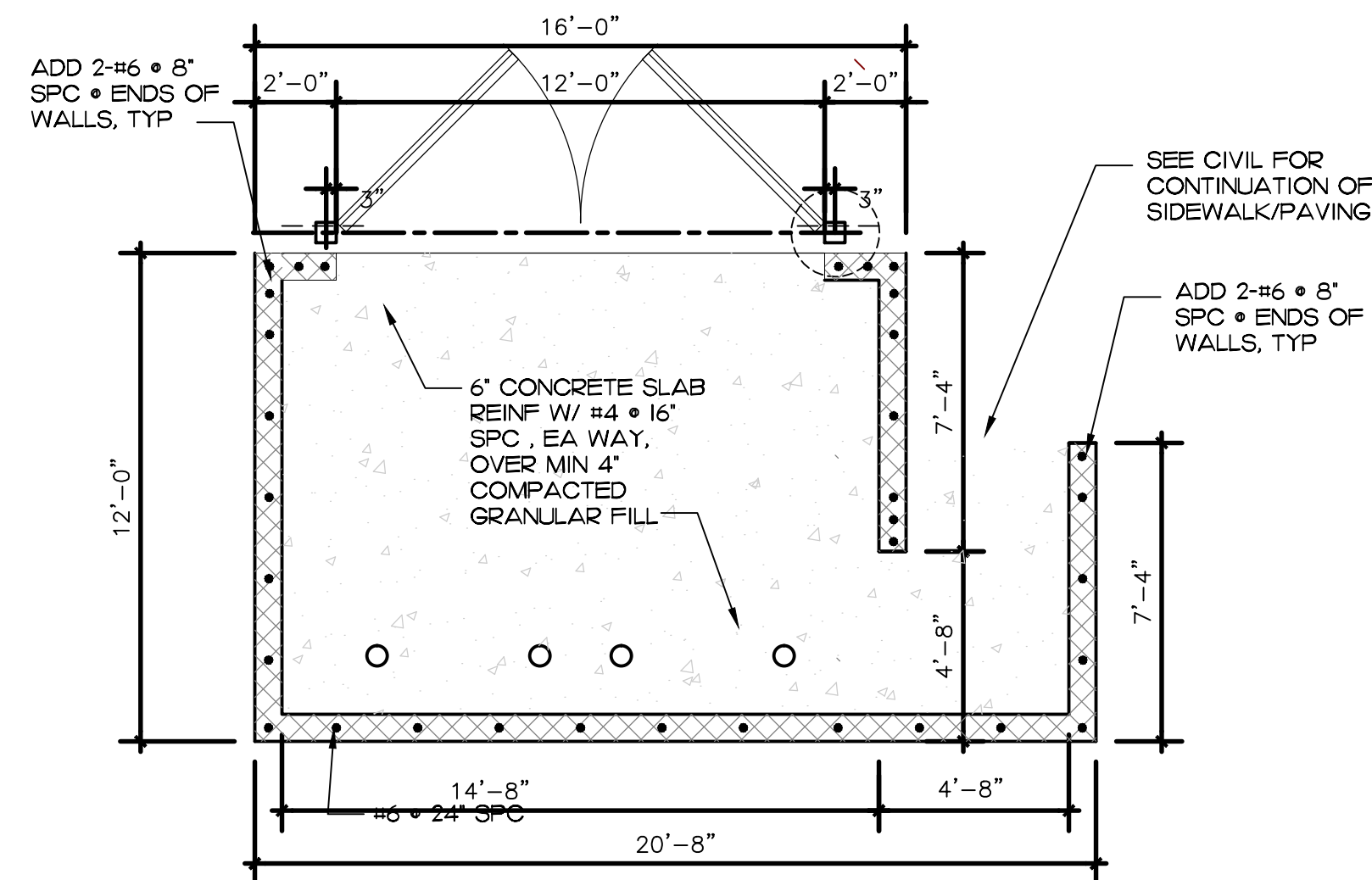
**SITE ELEMENTS**

P C # 3 6 5 1 1 1

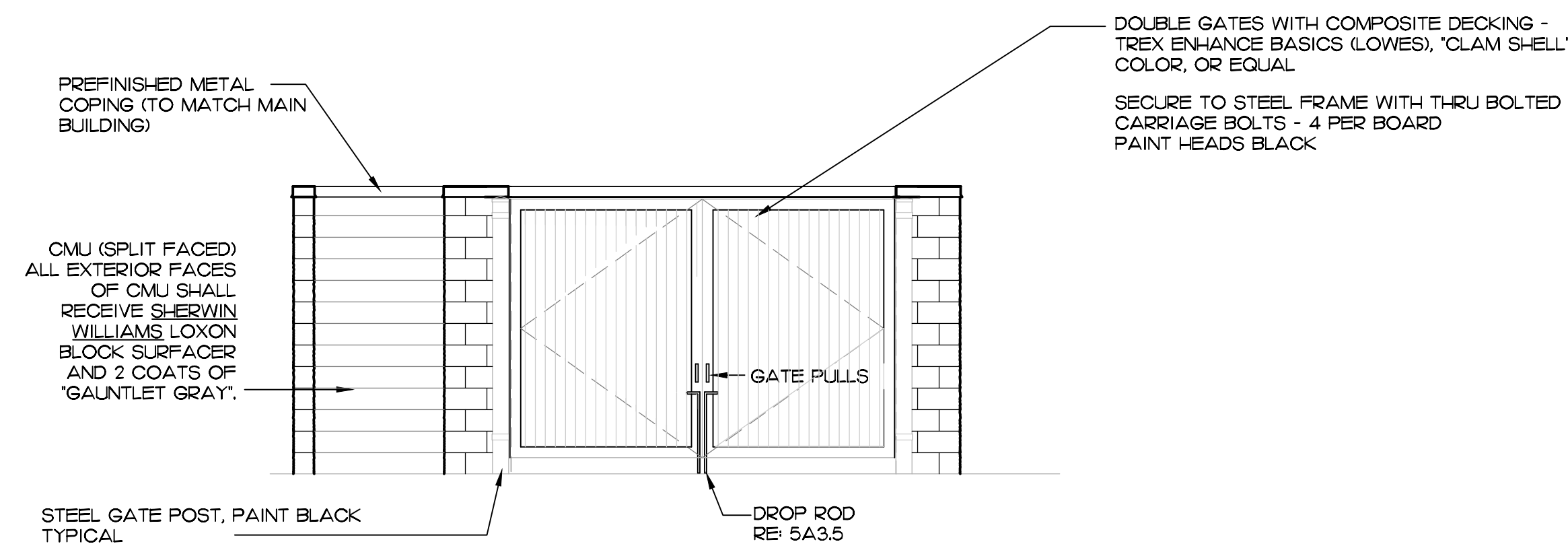




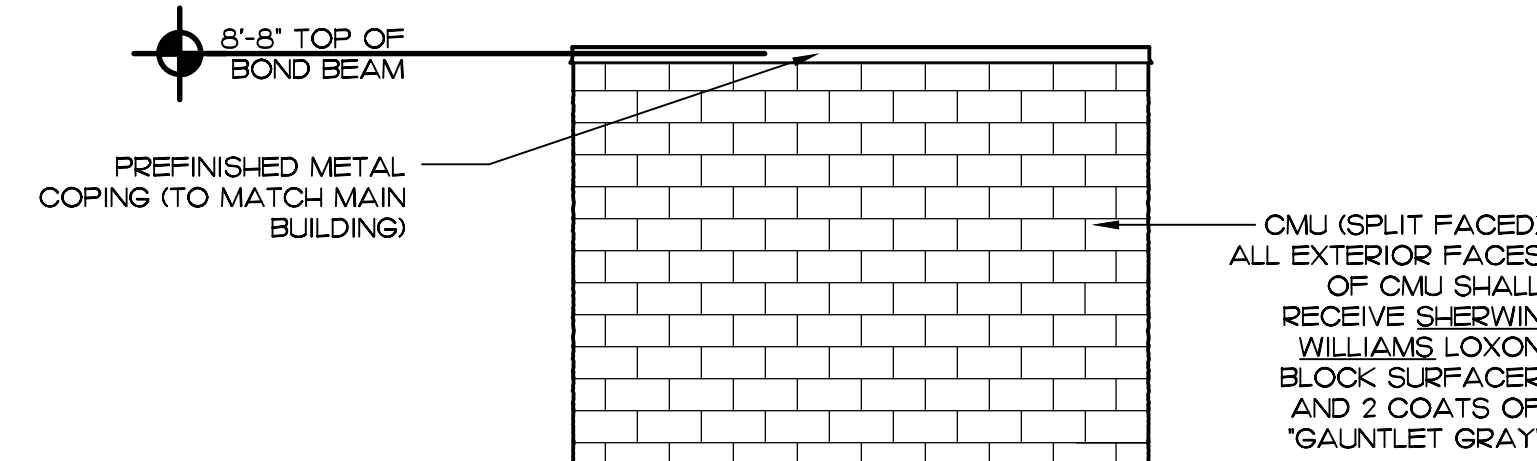
## FOUNDATION PLAN



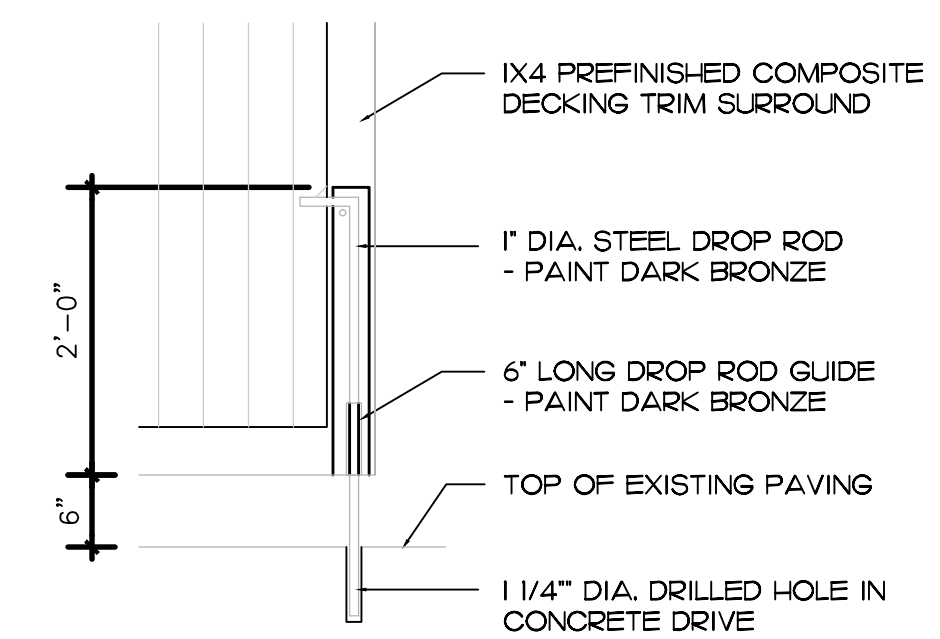
## 3 FLOOR PLAN



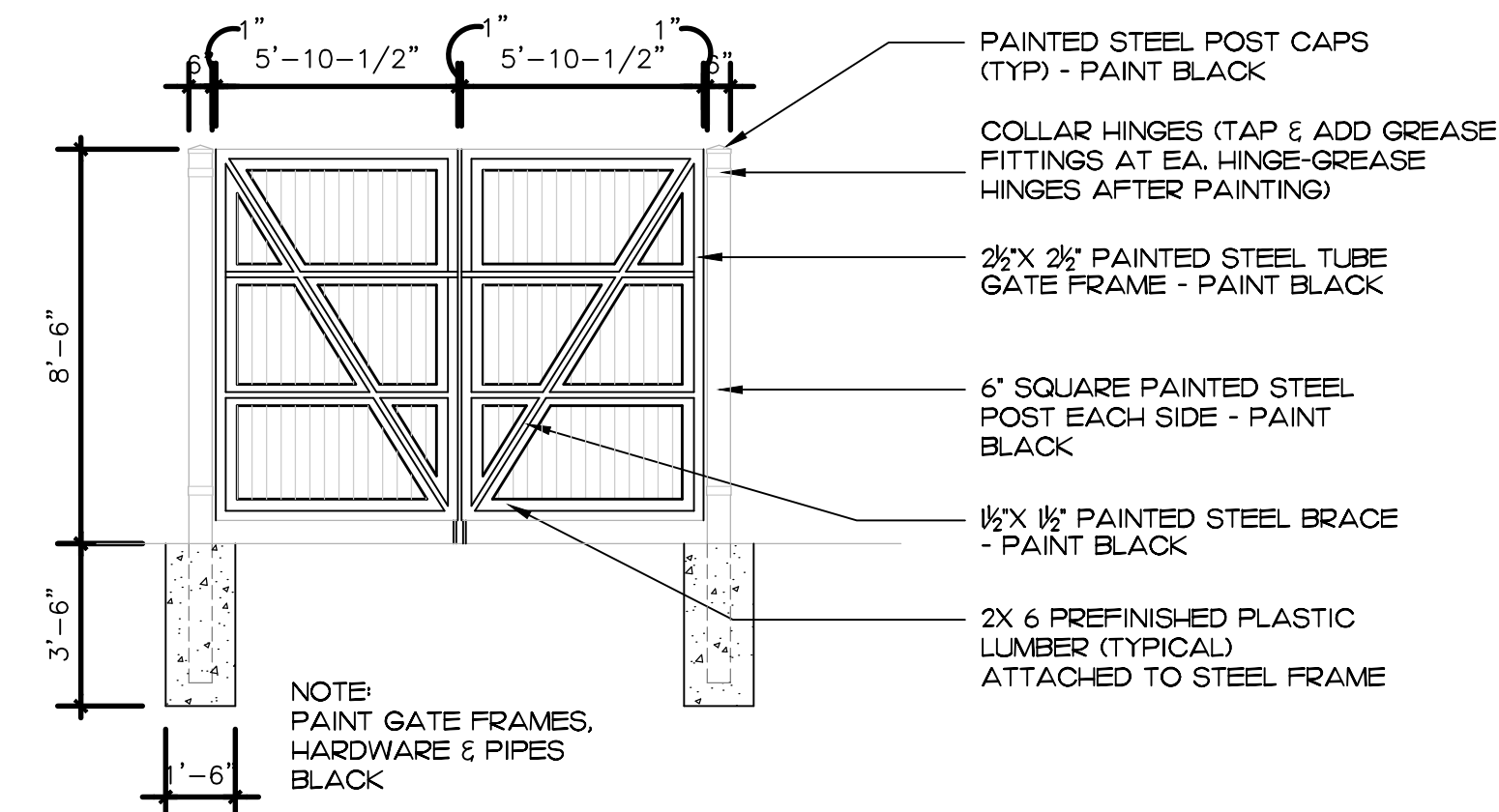
**FRONT ELEVATION**



## 4 SIDE ELEVATION



## 5 DROP ROD DETAIL



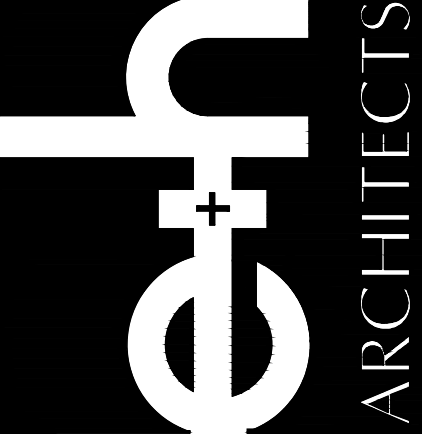
### F TYPICAL GATE ELEVATION

dunkin' brands<sup>sm</sup>

L + H ARCHITECTS, P.C.

750 OLD HICKORY BLVD.,  
SUITE 150-2  
BRENTWOOD, TN 37027

p|615.377.3111  
www.EandHArch.com

[illegible]

1402 WESTERN BOULEVARD  
TARBORO, NORTH CAROLINA

REFUSE ENCLOSURE

PC #365111



## AS1.2

PERMIT ISSUE DATE: 10-20-2023