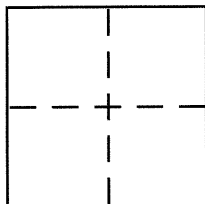


CORNER RECORD

City of HAYWARDCounty of ALAMEDA, CaliforniaBrief Legal Description PARCEL 1, PARCEL MAP 5708, FILED IN BOOK 189 OF MAPS, AT PAGE 81

CORNER TYPE

Government Corner	Control	
Meander	Property	X
Rancho	Other	
Date of Survey	<u>JULY 12, 2016</u>	

COORDINATES (Optional)

N.		
E.		
Zone	<u>NAD27</u>	<u>NAD83</u>
NAD83 Epoch		
Elev.		
Vert. Datum:	<u>NGVD29</u>	<u>NAVD88</u>
Meas. Units:	<u>Metric</u>	<u>Imperial</u>

Corner – Left as found Found and tagged Established Reestablished **X** Rebuilt

Identification and type of corner found: Evidence used to identify or procedure used to establish or reestablish the corner:

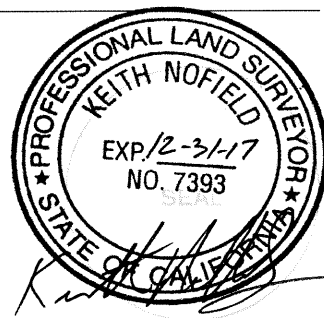
FOUND: 2.5" DIAMETER BRASS DISC WITH PUNCH IN MONUMENT WELLS, STAMPED "CITY OF HAYWARD"**IN PARKSIDE DRIVE, PER (189 MAPS 81)****SEE SKETCH ON PAGE 2 OF 2**

A description of the physical condition of the monument as found and as set or reset:

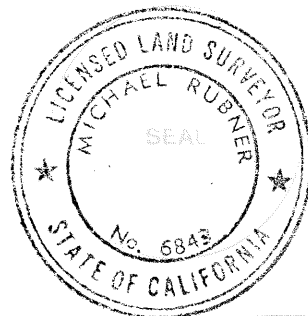
SET: 1/2" DIAMETER REBAR WITH PLASTIC CAP "PLS 7393", OR NAIL AND 3/4" BRASS TAG "PLS7393"**SEE SKETCH ON PAGE 2 OF 2**

SURVEYOR'S STATEMENT

This Corner Record was prepared by me or under my direction in conformance with

the Land Surveyor's Act on JULY 16, 2016Signed [Signature] P.L.S. or P.C.E. No. PLS 7393

COUNTY SURVEYOR'S STATEMENT

This Corner Record was received 20 JULY, 2016and examined and filed 10 AUGUST, 2016Signed [Signature] P.L.S. or P.C.E. No. 6843Title COUNTY SURVEYOR

County Surveyor's Comment

