

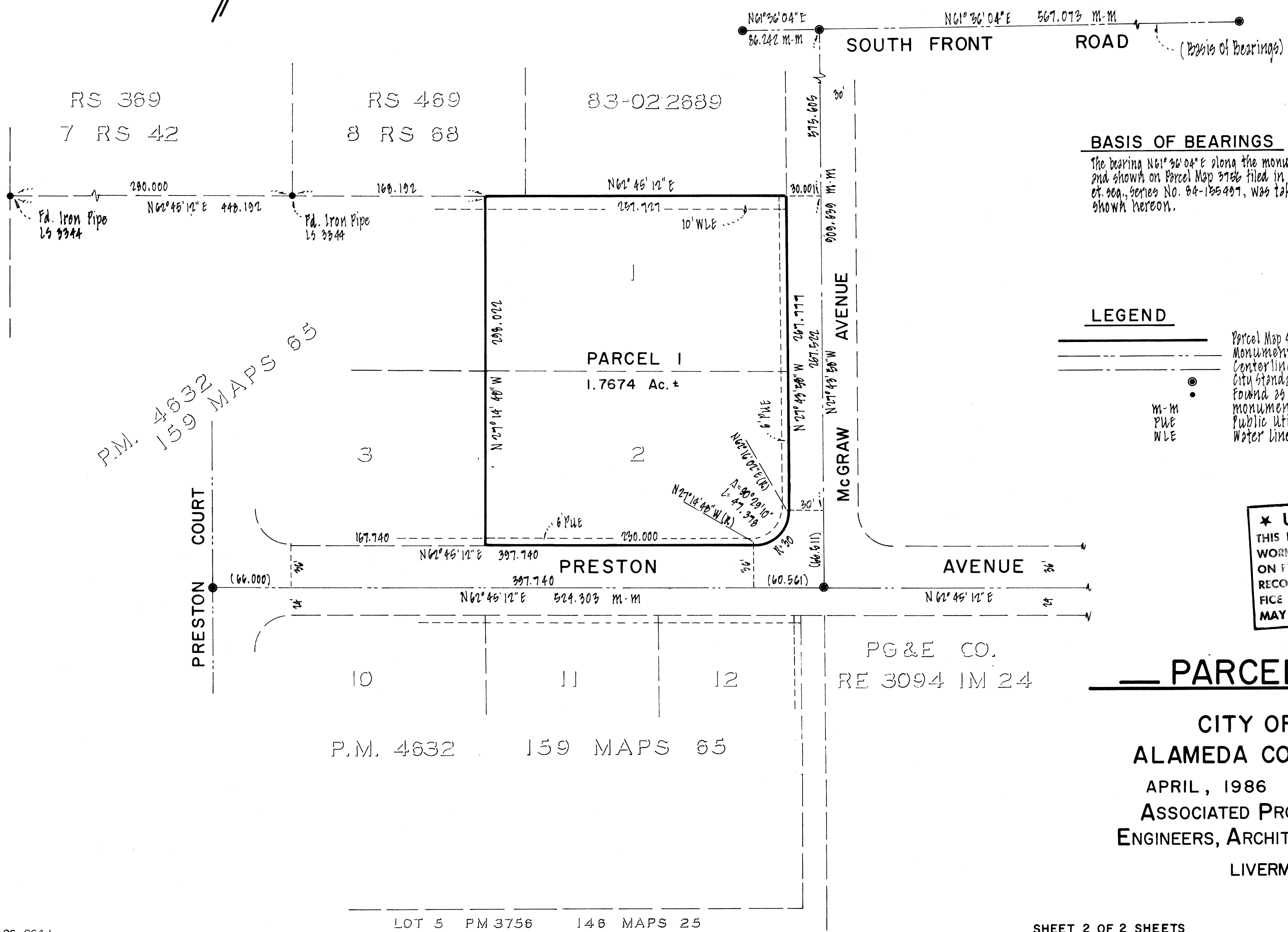
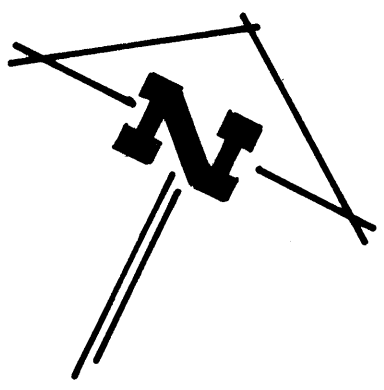
pg 46

Map BK 161

PM 4877

PM 4877  
9/5/19  
MAP BK 161

PAGE 46



**BASIS OF BEARINGS**

The bearing N61°36'04"E along the monument line of South Front Road and shown on Parcel Map 3756 filed in Book 146 Parcel Maps at Page 25 of seq., series No. 84-135497, was taken as the basis of bearings shown hereon.

**LEGEND**

- Parcel Map 4677 Boundary Line
  - Monument Line
  - Centerline
  - City Standard Monument Found
  - Found as noted
  - monument to monument
  - Public Utility Easement
  - Water Line Easement
- M-M  
PUE  
WLE

**★ USE WITH CAUTION ★**  
THIS IS A PUBLIC WORKS MAP. ANY WORK OR COPY OF THIS MAP ON FILE IN THE OFFICE OF THE COUNTY RECORDER, COUNTY OF ALAMEDA, MAY HAVE BEEN ADDED HEREON.

**— PARCEL MAP 4877 —**

**CITY OF LIVERMORE**  
**ALAMEDA COUNTY, CALIFORNIA**  
APRIL, 1986      SCALE: 1" = 60'  
**ASSOCIATED PROFESSIONS INCORPORATED**  
**ENGINEERS, ARCHITECTS, SURVEYORS, PLANNERS**  
**LIVERMORE, CALIFORNIA**

filed 6-23-86 161/46