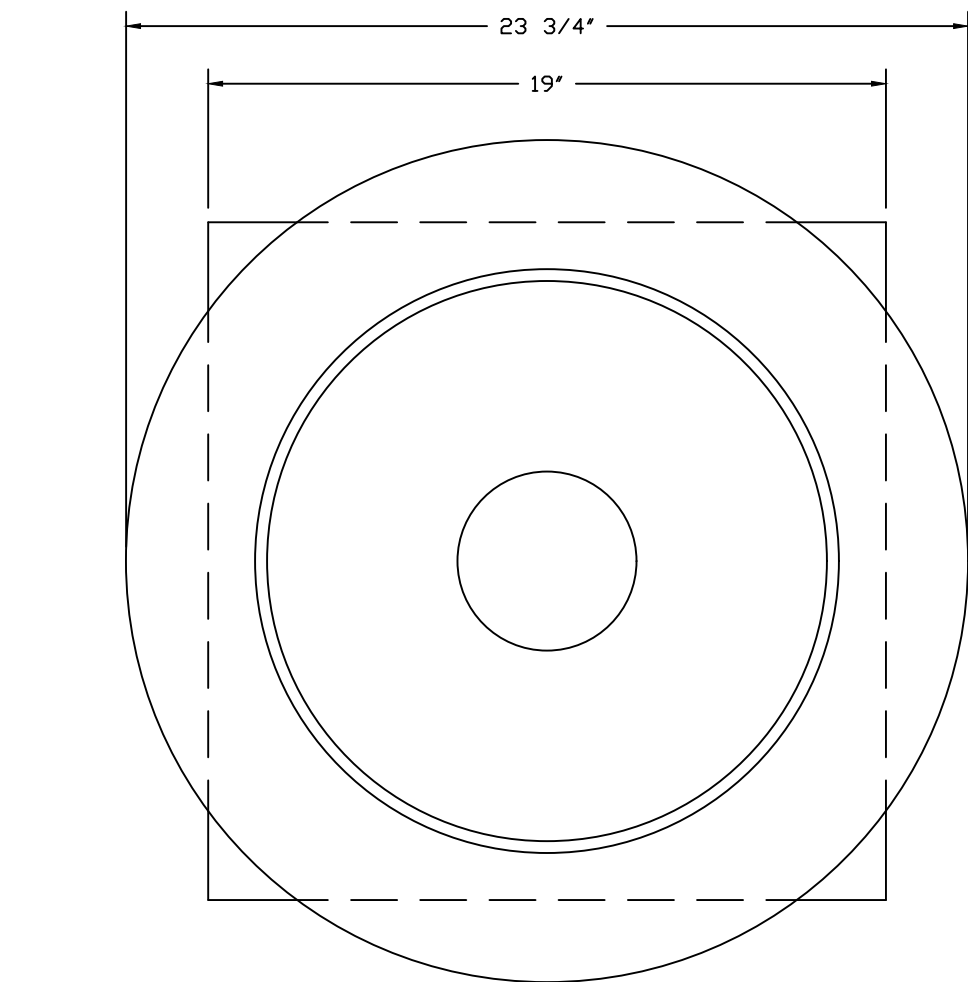
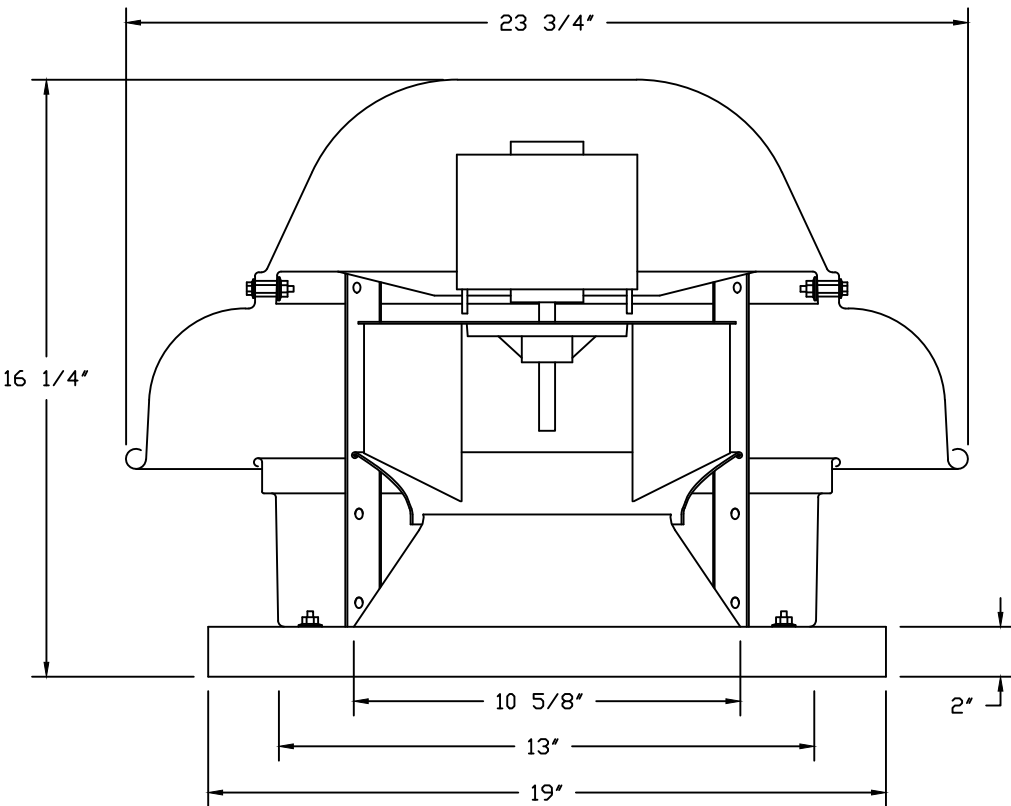


FAN #3 DR12HFA - EXHAUST FAN



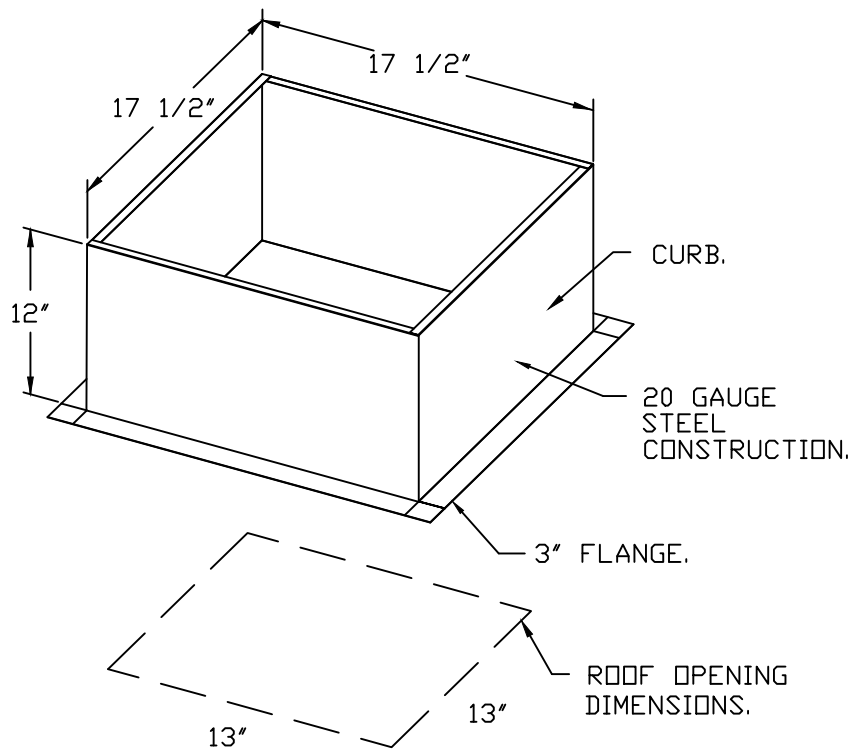
TOP VIEW

FEATURES:

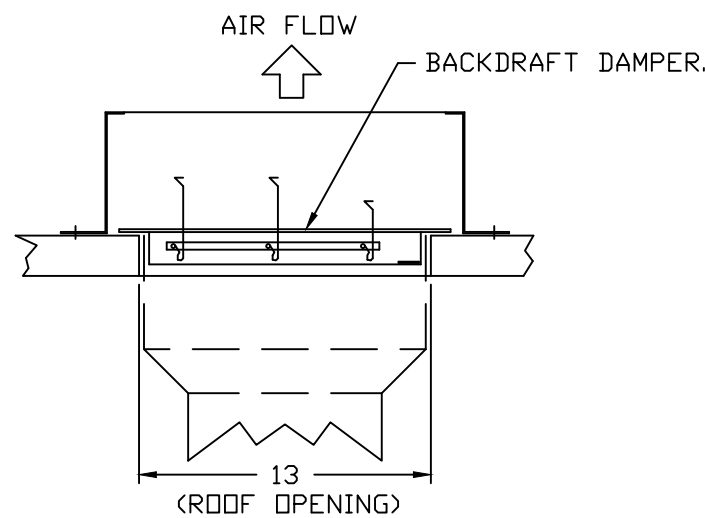
- DIRECT DRIVE CONSTRUCTION (NO BELTS/PULLEYS).
- ROOF MOUNTED FANS.
- UL705.
- SAFETY DISCONNECT.
- STANDARD BIRD SCREEN.
- SPEED CONTROL.

OPTIONS

- ECM WIRING PACKAGE - MANUAL OR 0-10VDC REFERENCE SPEED CONTROL.
- RTC - (THERMISTOR MOTOR), CCW ROTATION.
- 1 12" BDD DAMPER.
- 2 YEAR PARTS WARRANTY.



BACKDRAFT DAMPER INSTALLATION



NOTE: UNLESS OTHERWISE STATED, PANDA RESTAURANT GROUP SHALL PROVIDE ALL EQUIPMENT ON THE FOLLOWING CAPTIVEAIRE SHEETS, INCLUDING: HOODS, FIRE SYTEM, EXHAUST FANS, SUPPLY FAN, BATHROOM FAN AND ELECTRICAL INTERLOCK PACKAGE.

DOUBLE WALL DUCT BY MECHANICAL PLEASE USE CONTACT BELOW FOR PRICING

ANSUL GAS VALVE:

THE ANSUL GAS VALVE IS PROVIDED BY CAPTIVEAIRE SYSTEMS. CONTACT OUR OFFICE WITH THE VALVE SIZE 3 DAYS IN ADVANCE OF WHEN IT IS NEEDED ON SITE.

FOR QUESTIONS CALL THE CAPTIVEAIRE SOUTHERN CALIFORNIA OFFICE  
3002 DOW AVENUE, SUITE 410  
TUSTIN, CA 92780  
TEL: 714-957-1500 EMAIL: REG86@CAPTIVEAIRE.COM

REVISIONS

DESCRIPTION	DATE:
Δ	
Δ	
Δ	
Δ	

**Southern California Office**  
3002 Dow Ave., Suite 410, Tustin, CA 92780  
PHONE: (714) 957-1500 FAX: (919) 227-5975 EMAIL: reg86@captiveaire.com

Panda Express - Oklahoma City OK (D21040)  
OKLAHOMA CITY, OK, 73162

**DATE:** 12/24/2022  
**DWG.#:** 5784117  
**DRAWN BY:** AH-86  
**SCALE:** 3/4" = 1'-0"  
**MASTER DRAWING**

**SHEET NO.**  
5



PANDA EXPRESS, INC.  
1683 Walnut Grove Ave.  
Rosemead, California  
91770  
Telephone: 626.799.9898  
Facsimile: 626.372.8288

All ideas, designs, arrangement and plans indicated or represented by this drawing are the property of Panda Express Inc. and were created for use on this specific project. None of these ideas, designs, arrangements or plans may be used by or disclosed to any person, firm, or corporation without the written permission of Panda Express Inc.

REVISIONS:


ISSUE DATE:

ISSUE FOR PERMIT	01-16-23

DRAWN BY: AE

PANDA PROJECT #: D21040

ARCH PROJECT #: 261-415



MPW ENGINEERING, LLC  
CERTIFICATE OF AUTHORIZATION #2040 • EXP 06/2023  
110 W. 7TH STREET • SUITE 800 • TULSA, OK 74106  
(918) 582-4088 • (918) 582-4087 FAX

FOR INFORMATION ONLY

PANDA EXPRESS

PANDA HOME 2600  
KILPATRICK TURNPIKE & ROCKWELL AVE  
OKLAHOMA CITY, OK 73162

M-404

HOOD DETAIL PLAN

PANDA HOME 2600 R4