

PARCEL MAP

CONSISTING OF ONE SHEET
BEING A PORTION OF THE PUEBLO LANDS OF
THE CITY OF SAN JOSE AND
LYING ENTIRELY WITHIN THE CITY OF
SAN JOSE, CALIFORNIA
SANTA CLARA COUNTY, CALIFORNIA
SCALE: 1" = 50' JANUARY, 1973

SURVEYOR'S CERTIFICATE

THIS MAP WAS PREPARED BY ME OR UNDER MY DIRECTION AND WAS COMPILED FROM
RECORD DATA IN CONFORMANCE WITH THE REQUIREMENTS OF THE SUBDIVISION MAP
ACT AT THE REQUEST OF WM. LYON DEVELOPMENT CO. INC. IN JANUARY, 1973. I HEREBY
CERTIFY THAT IT CONFORMS TO THE APPROVED TENTATIVE MAP AND THE CONDITIONS
OF APPROVAL THEREOF; THAT ALL PROVISIONS OF APPLICABLE STATE LAW AND
LOCAL ORDINANCES HAVE BEEN COMPLIED WITH.

HENRY O. YOUNG - L.L.S. No 30556 *Henry O. Young*

CITY ENGINEER'S CERTIFICATE

THIS MAP HAS BEEN EXAMINED THIS 1st DAY OF February 1973, FOR CONFORMANCE
WITH THE REQUIREMENTS OF SECTION 11515 OF THE SUBDIVISION MAP ACT.

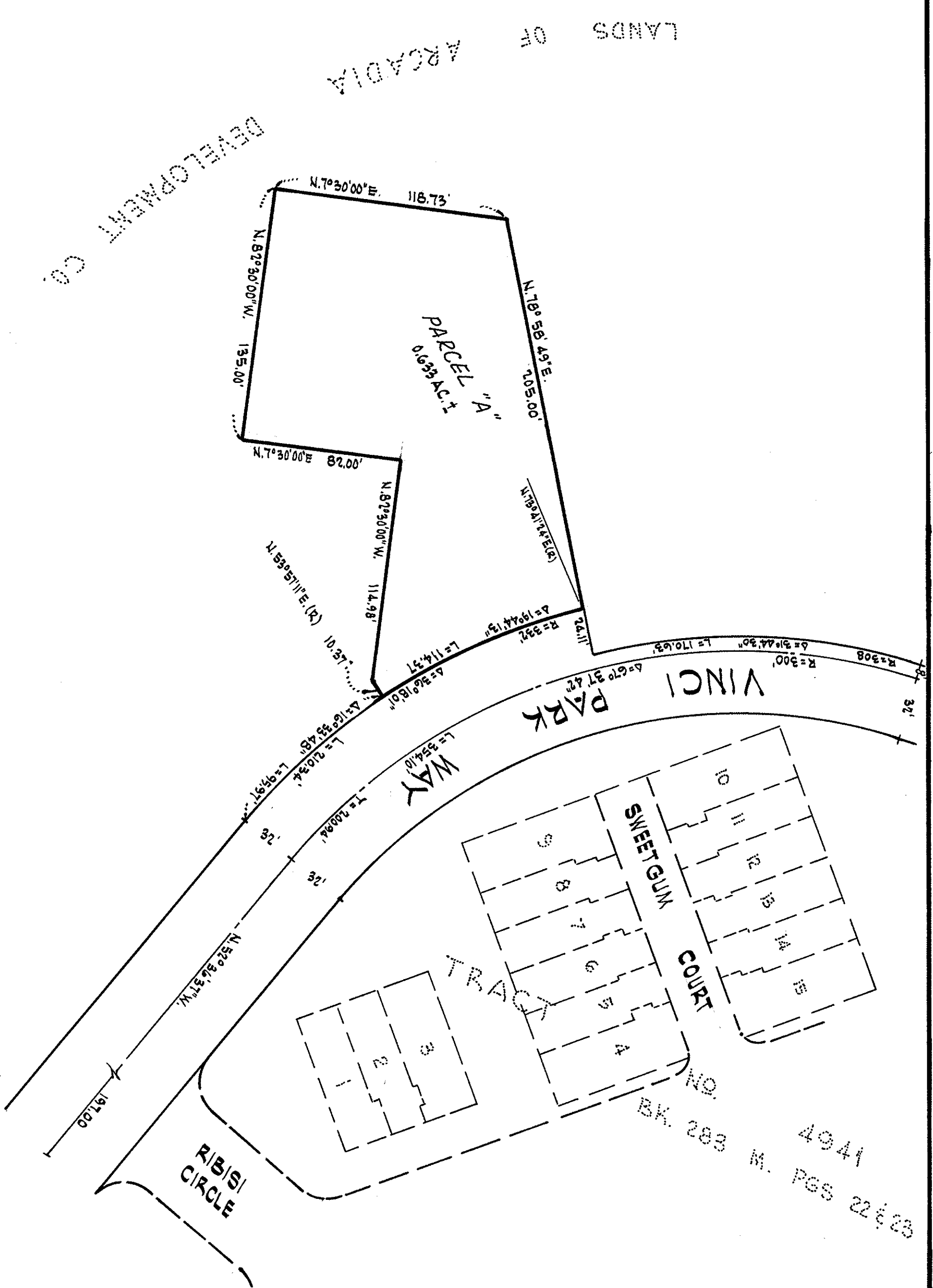
A.R. TURTURICI CITY ENGINEER *A.R. Turturici* Deputy

RECORDER'S CERTIFICATE

FILE NO. *444856* FEE \$5.00 PAID
FILED THIS 2nd DAY OF February 1973, AT 2:42 P.M., IN BOOK 316 OF MAPS, AT
PAGE 12, AT THE REQUEST OF WM. LYON & SONS,
#5.00 *GEORGE R. MANN*

COUNTY RECORDER BY: *Bernice Lione* DEPUTY

Mac Kay & Son
CIVIL ENGINEERS
3000 GORDON AVE. SANTA CLARA, CALIFORNIA



BASIS OF BEARINGS

THE BEARING OF N.52°36'37\"W. ALONG THE CENTERLINE OF VINCI PARK WAY
AS SHOWN ON TRACT NO. 4941, FILED FOR RECORD IN BOOK 123 OF MAPS,
AT PAGES 22 & 23, SANTA CLARA COUNTY RECORDS, WAS TAKEN AS THE
BASIS OF BEARINGS SHOWN HEREON.

NOTES

ALL DISTANCES AND DIMENSIONS ARE GIVEN IN FEET AND DECIMALS THEREOF.
THE AREA WITHIN THE BLUE BORDER IS 0.633 AC. ±