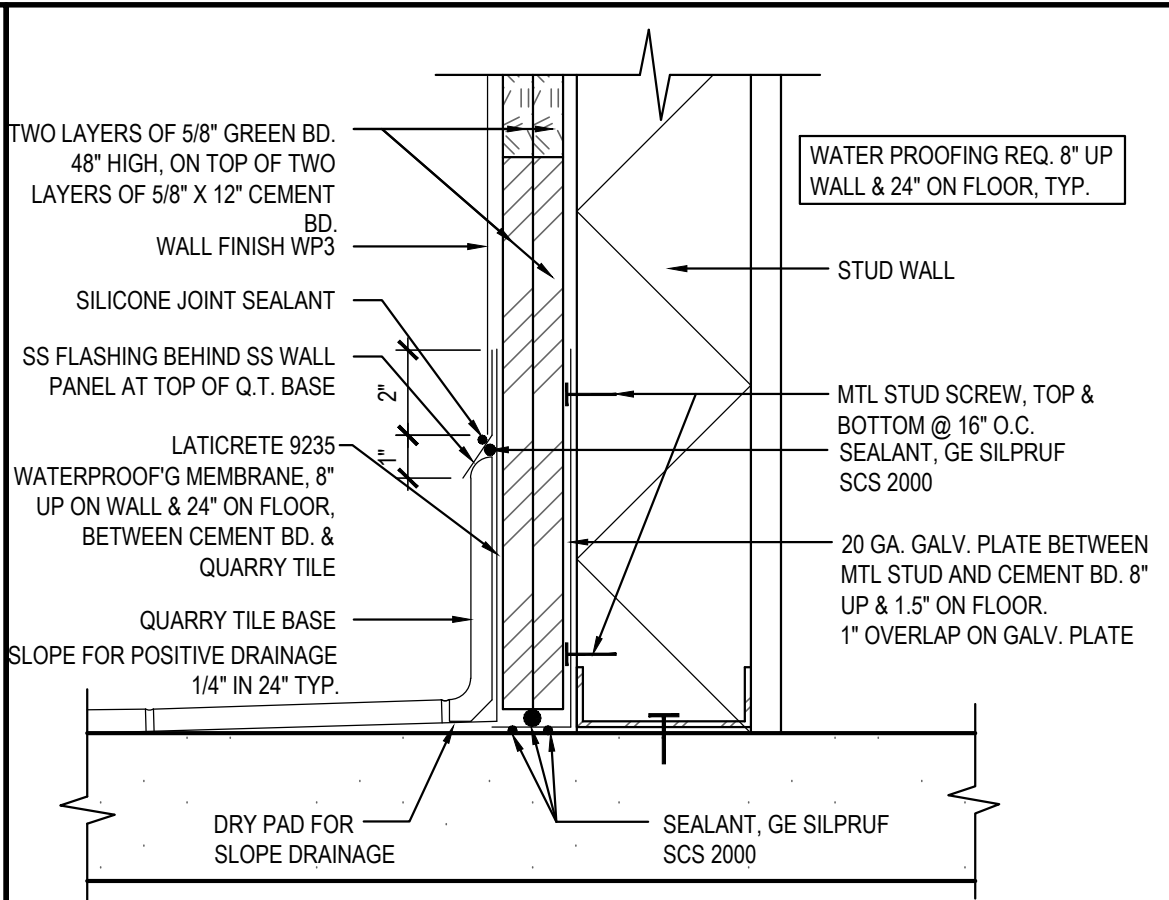


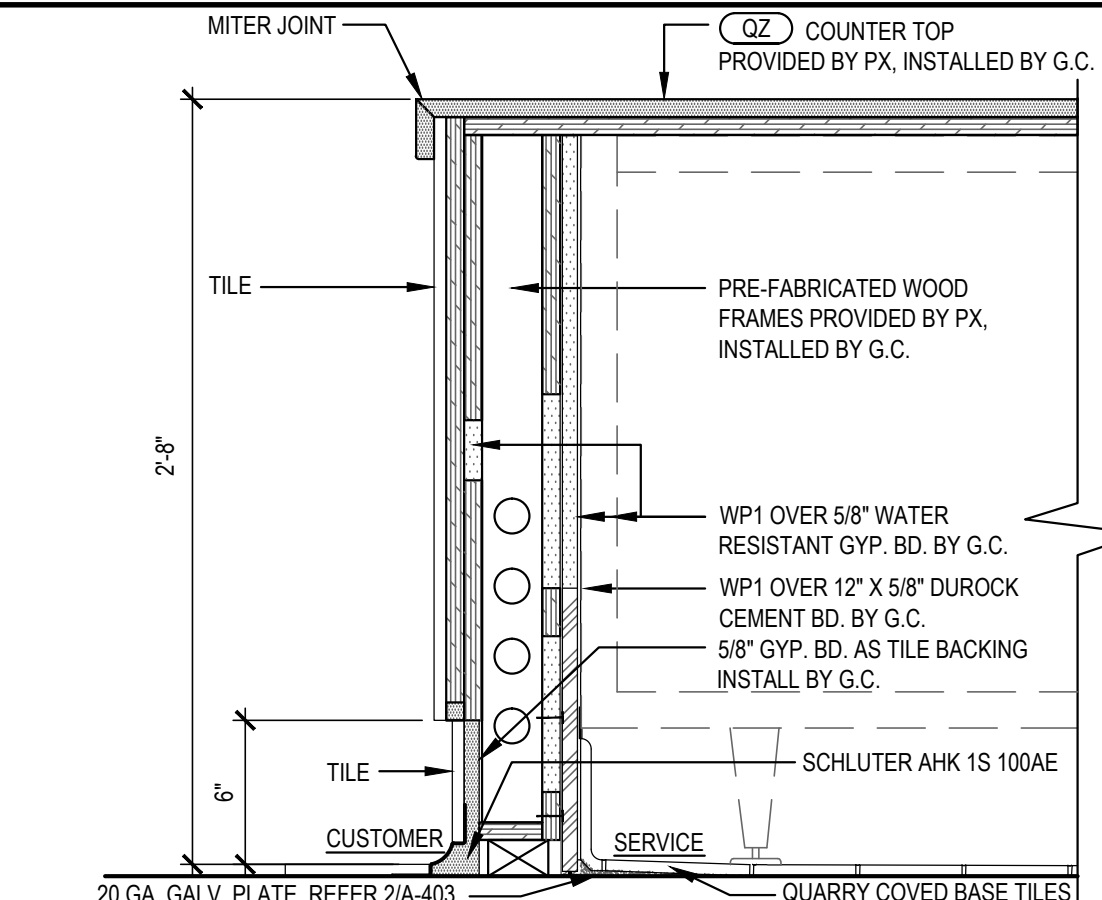
ELECTRIC PANELS DETAIL 19

Scale= 3/4" = 1'-0" A-403



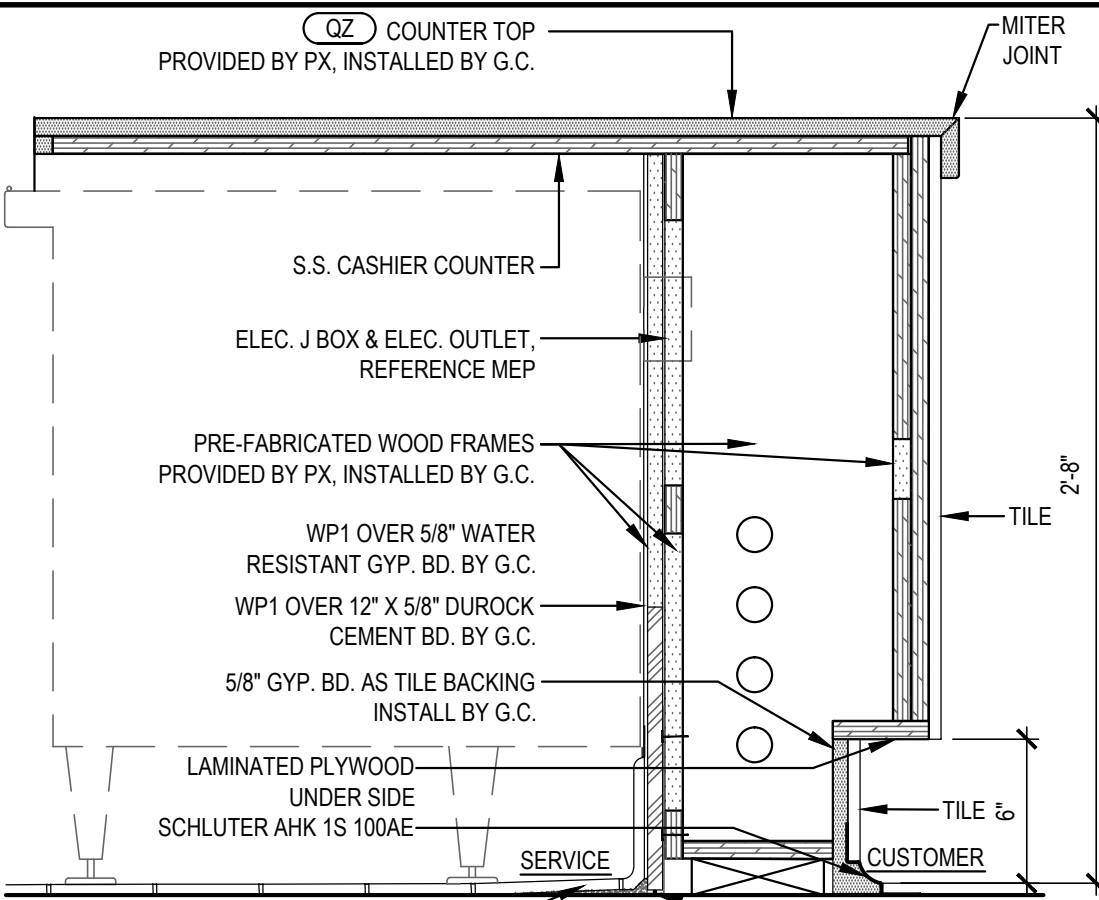
WALL BASE @ COOKLINE 16

Scale= NTS A-403



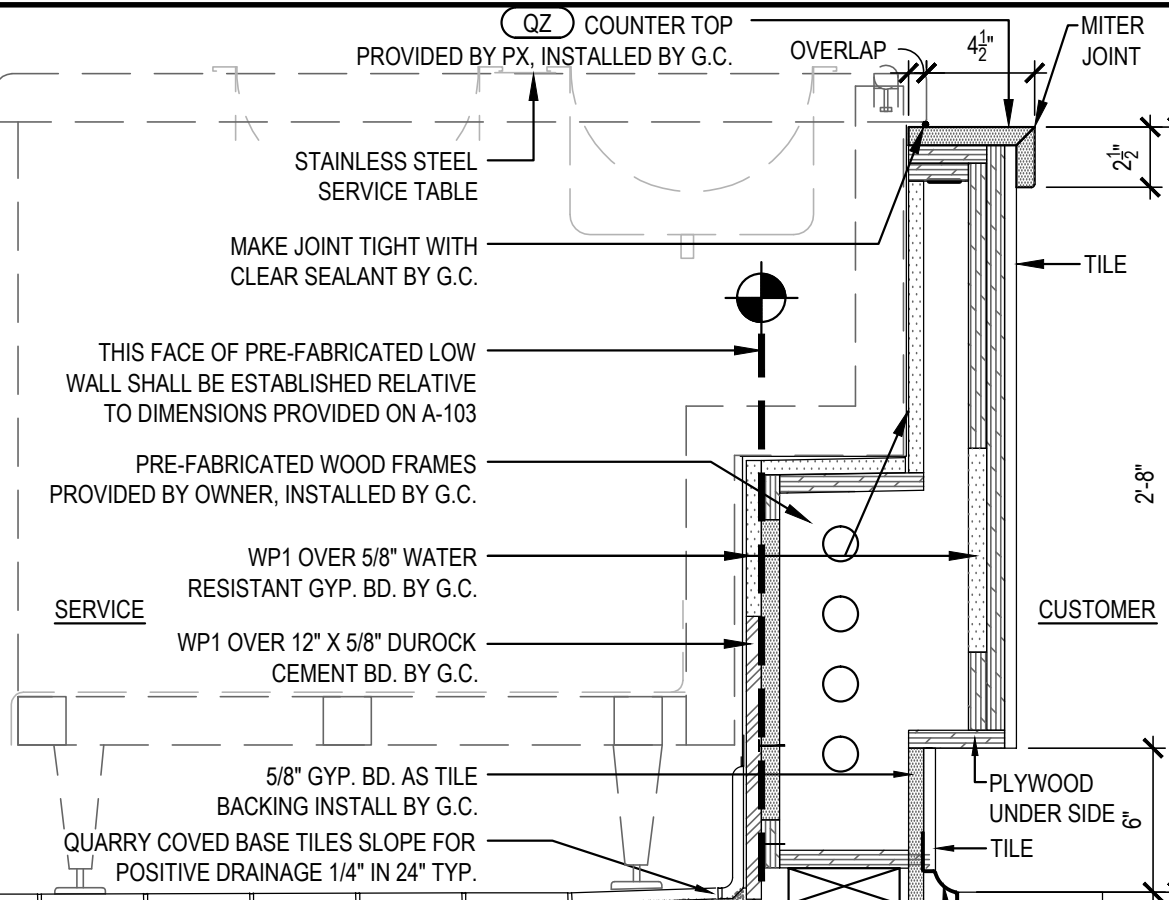
CASHIER COUNTER PLAN & DETAIL 12

Scale= 1 1/2" = 1'-0" A-403



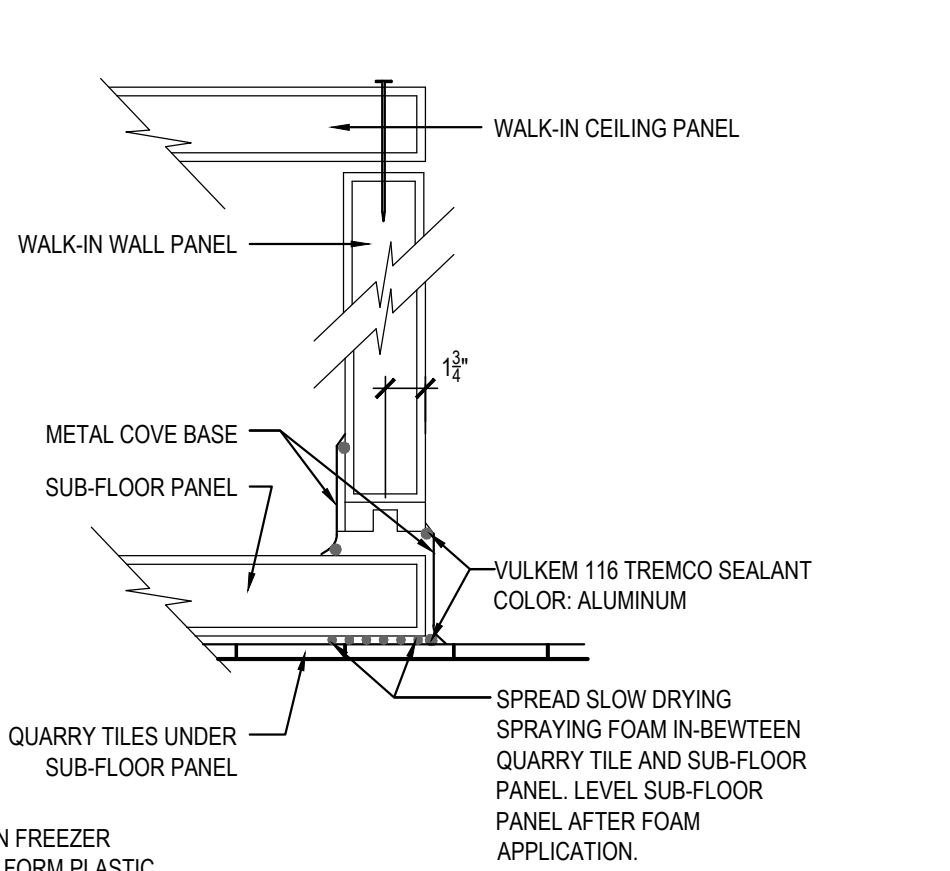
SERVICE COUNTER DETAIL 8

Scale= 1 1/2" = 1'-0" A-403



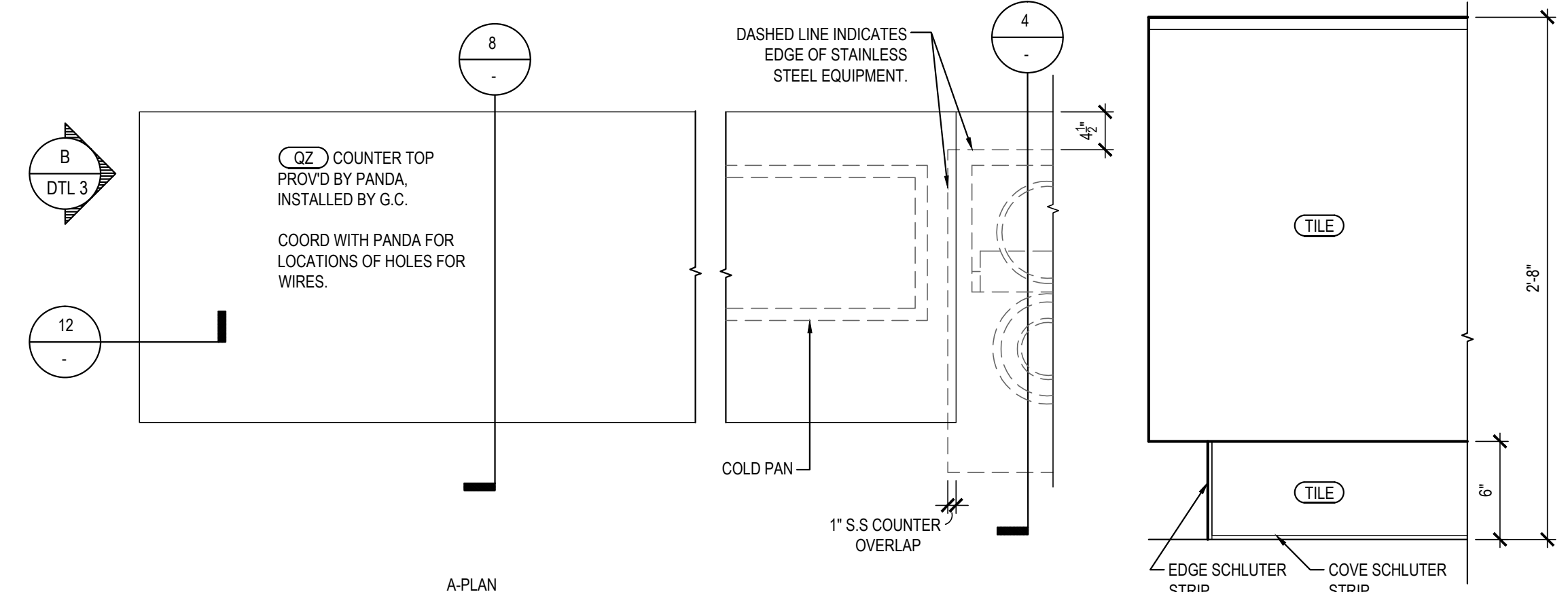
SERVICE COUNTER DETAIL 4

Scale= 1 1/2" = 1'-0" A-403



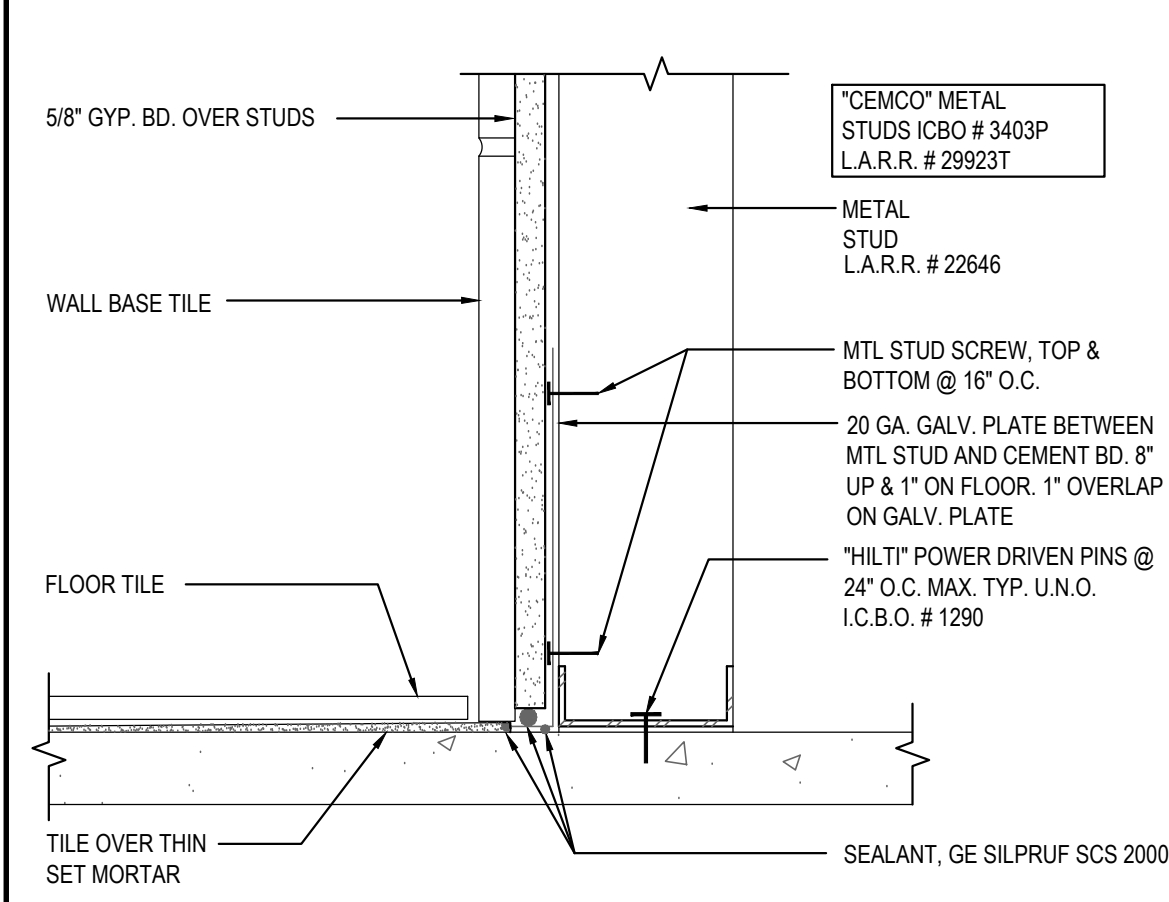
TYP. WALK-IN FREEZER SECTION 11

Scale= 1 1/2" = 1'-0" A-403



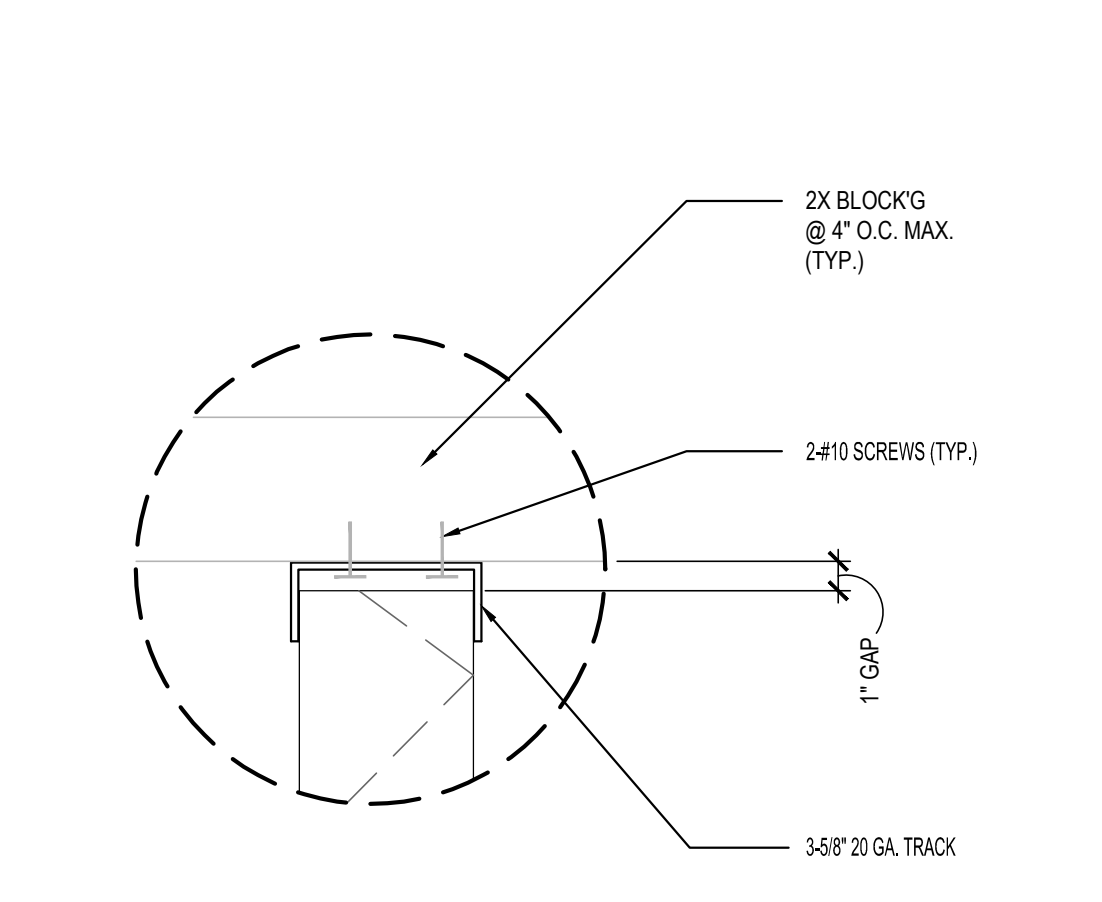
SERVICE COUNTER PLAN AND ELEVATION 3

Scale= 3/4" = 1'-0" A-403



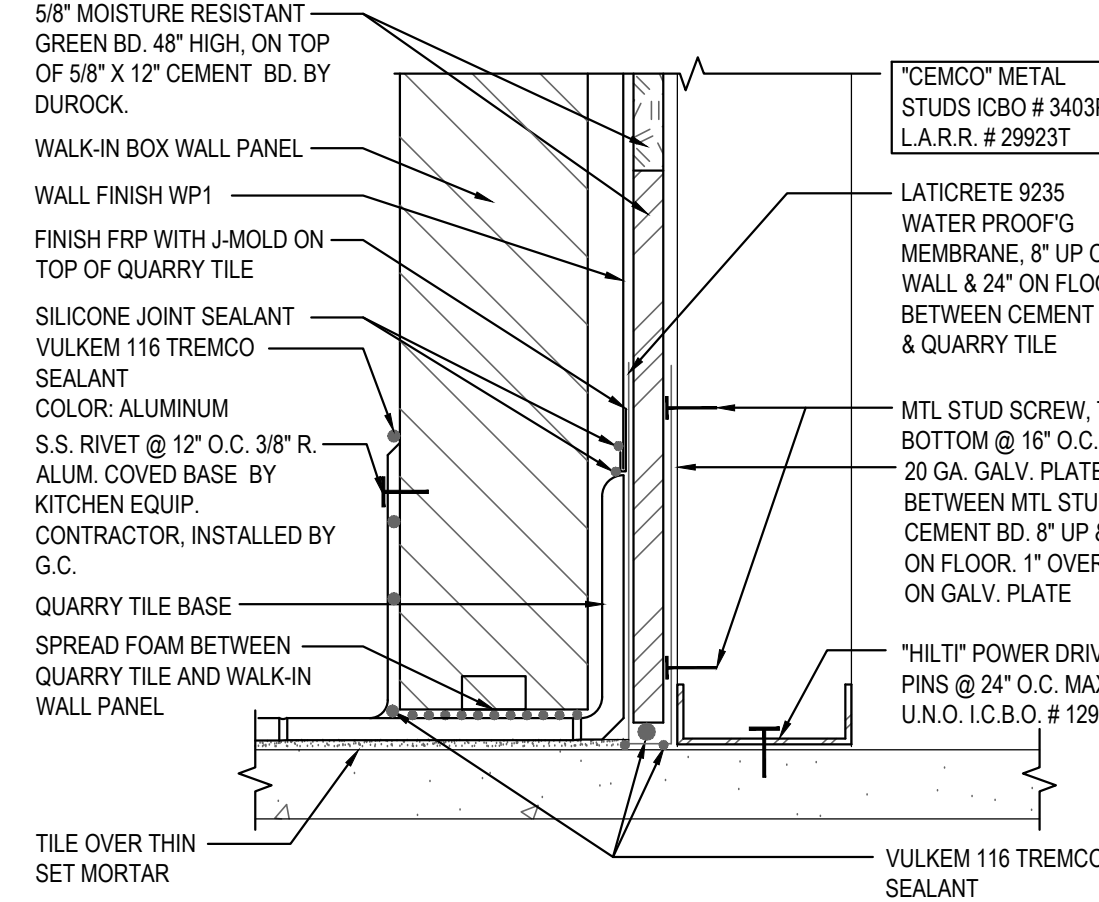
WALL BASE @ DINING ROOM 14

Scale= 3" = 1'-0" A-403



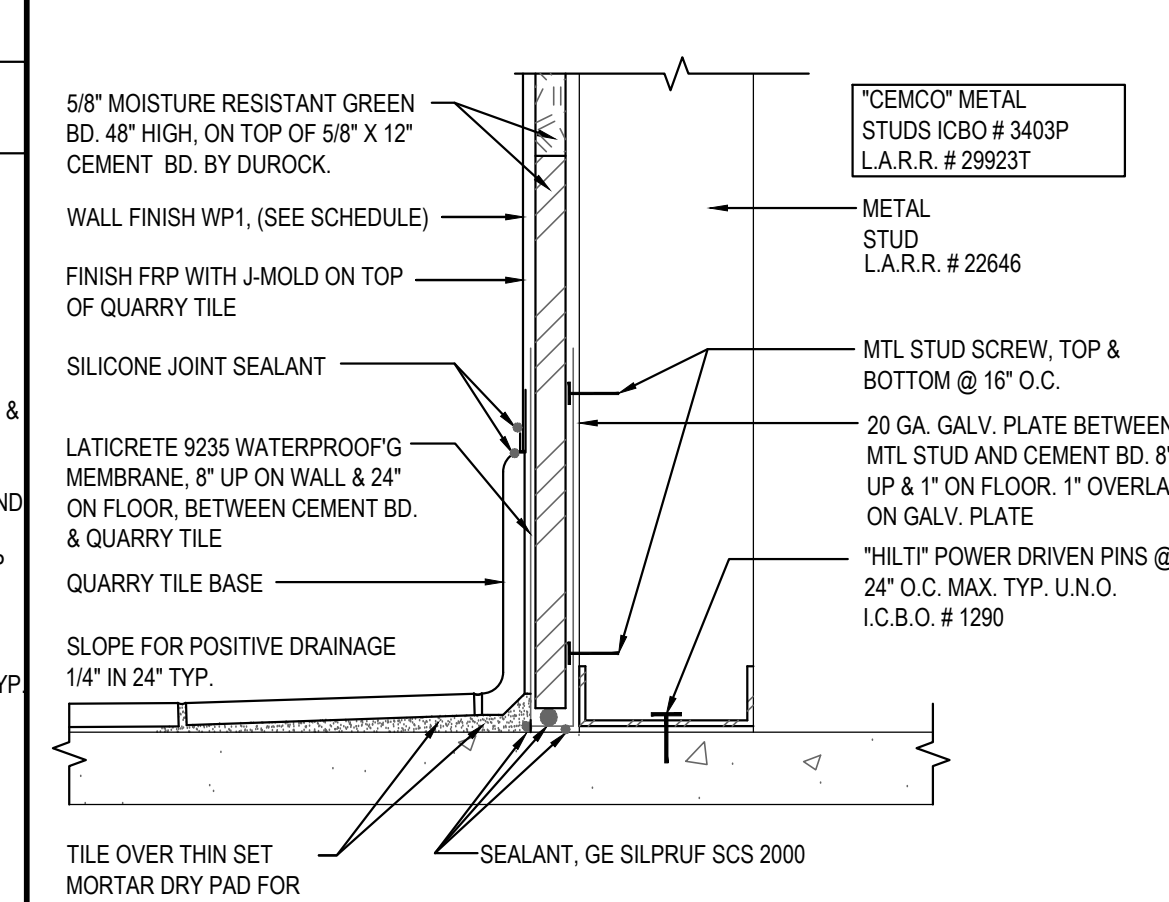
METAL STUD CONNECTION 10

Scale= 1 1/2" = 1'-0" A-403



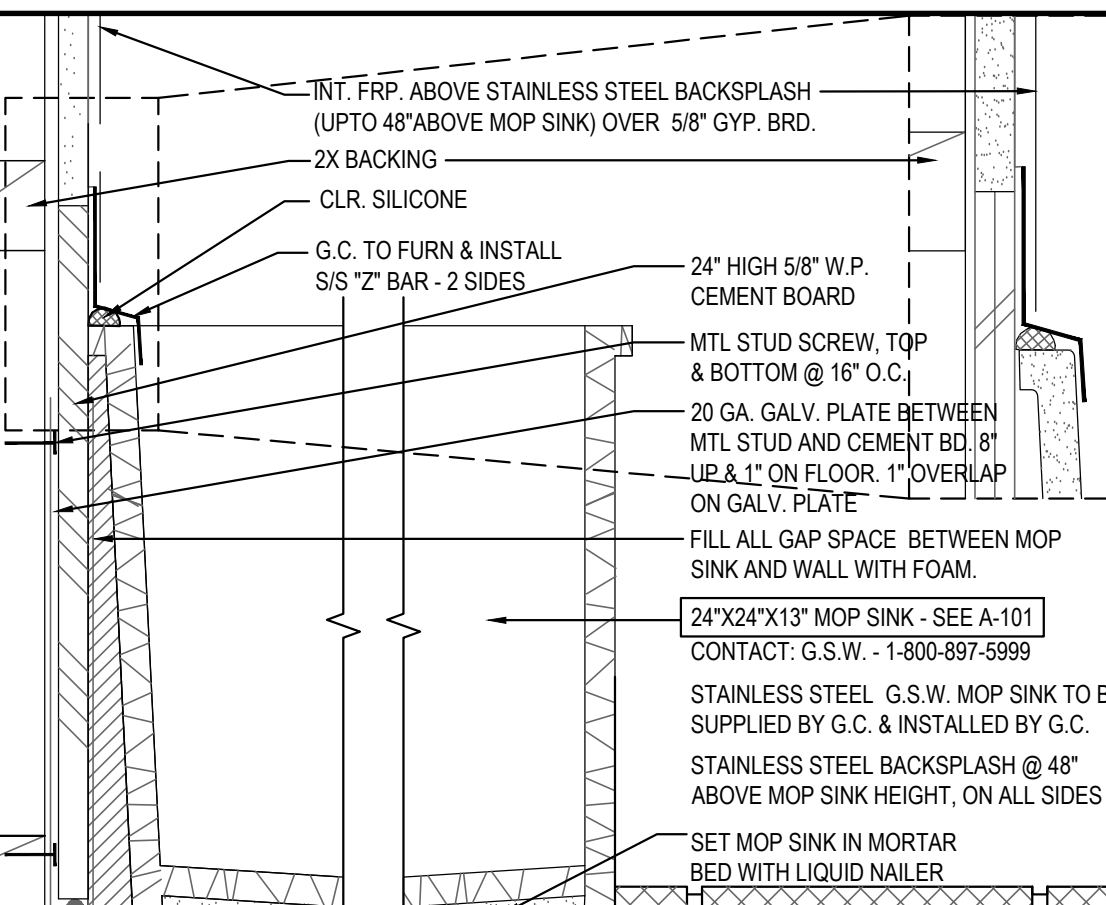
WALL BASE@WALK-IN & STUD WALL 6

Scale= 3" = 1'-0" A-403



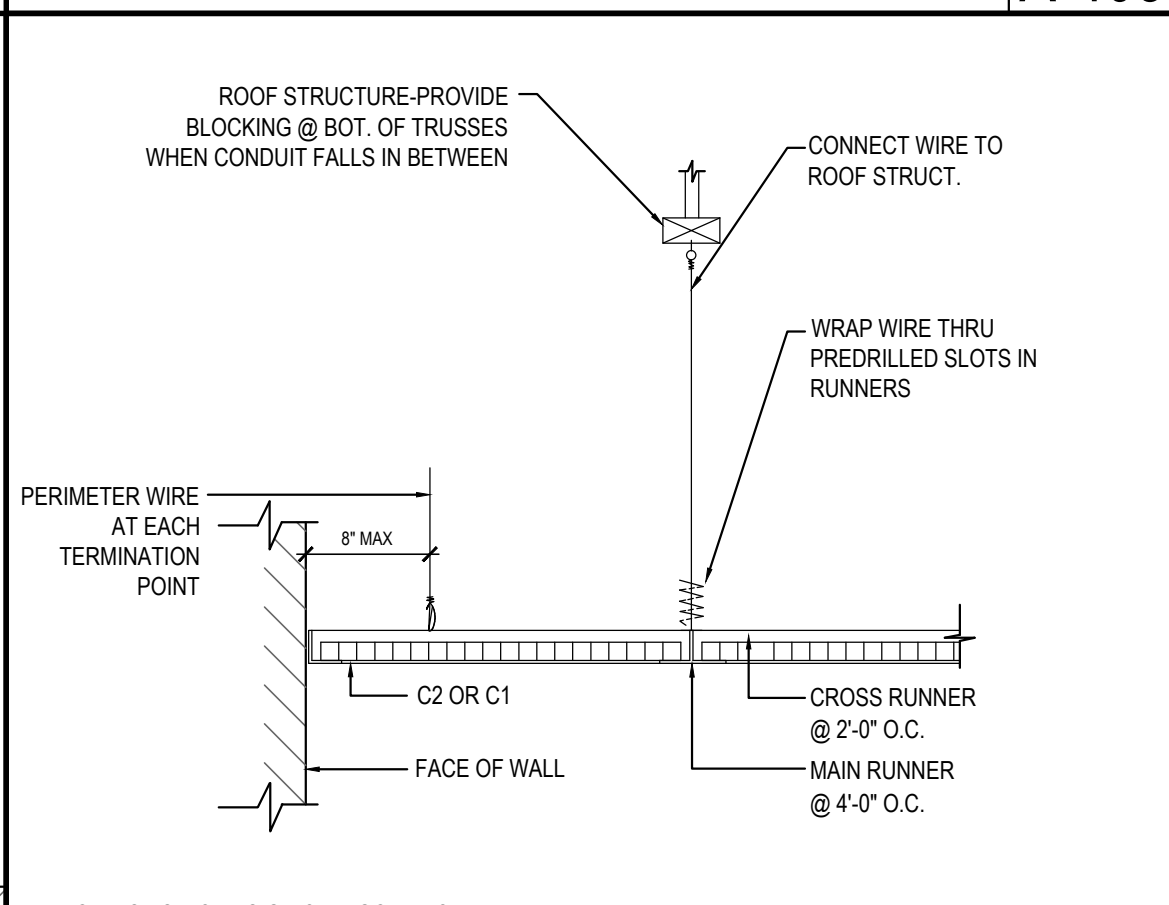
WALL BASE @ KITCHEN 2

Scale= 3" = 1'-0" A-403



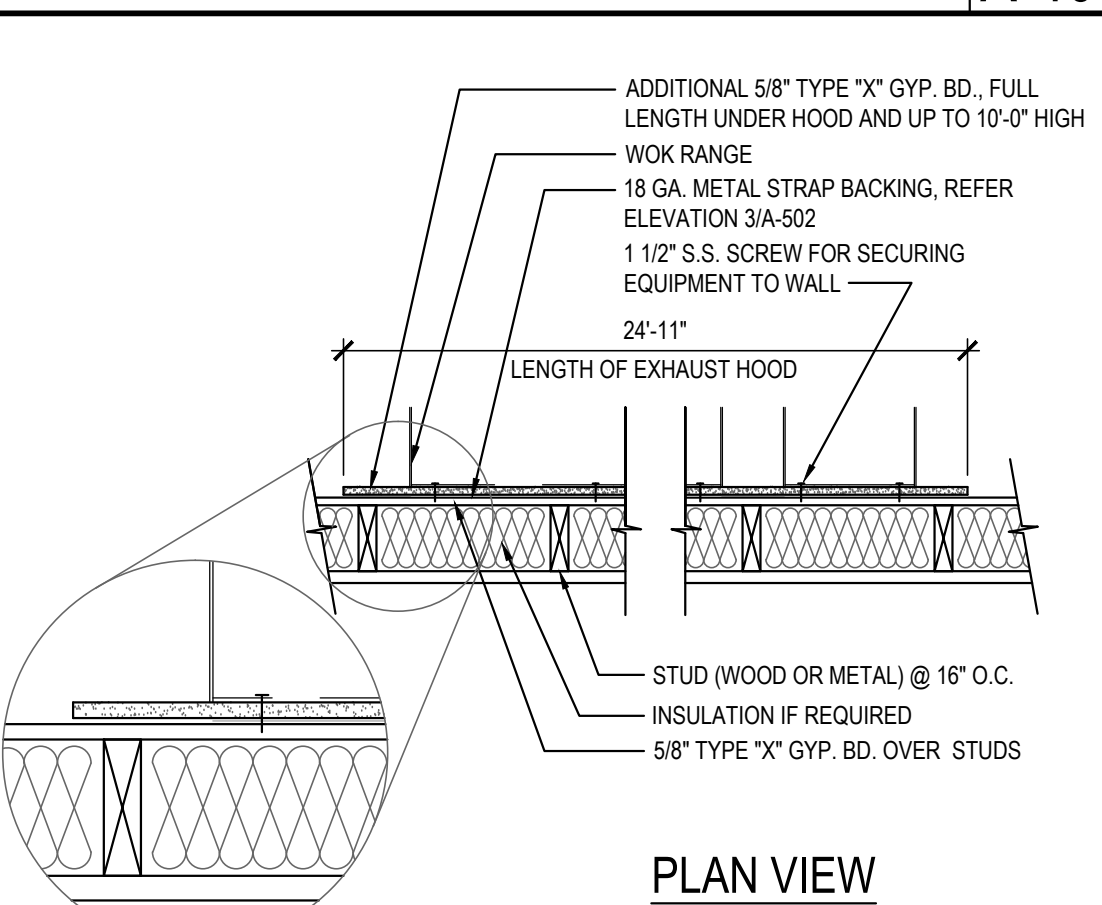
MOP SINK 17

Scale= 3" = 1'-0" A-403



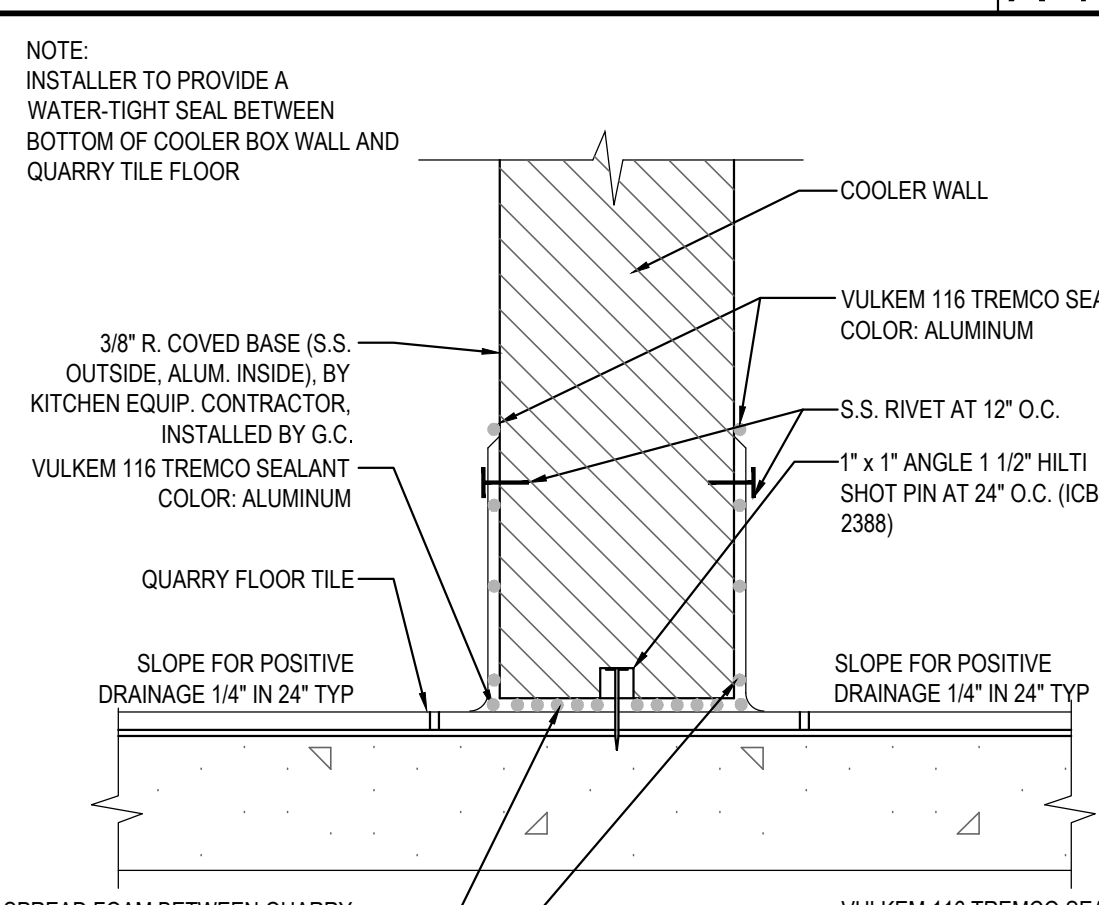
CEILING DETAIL 13

Scale= 3/4" = 1'-0" A-403



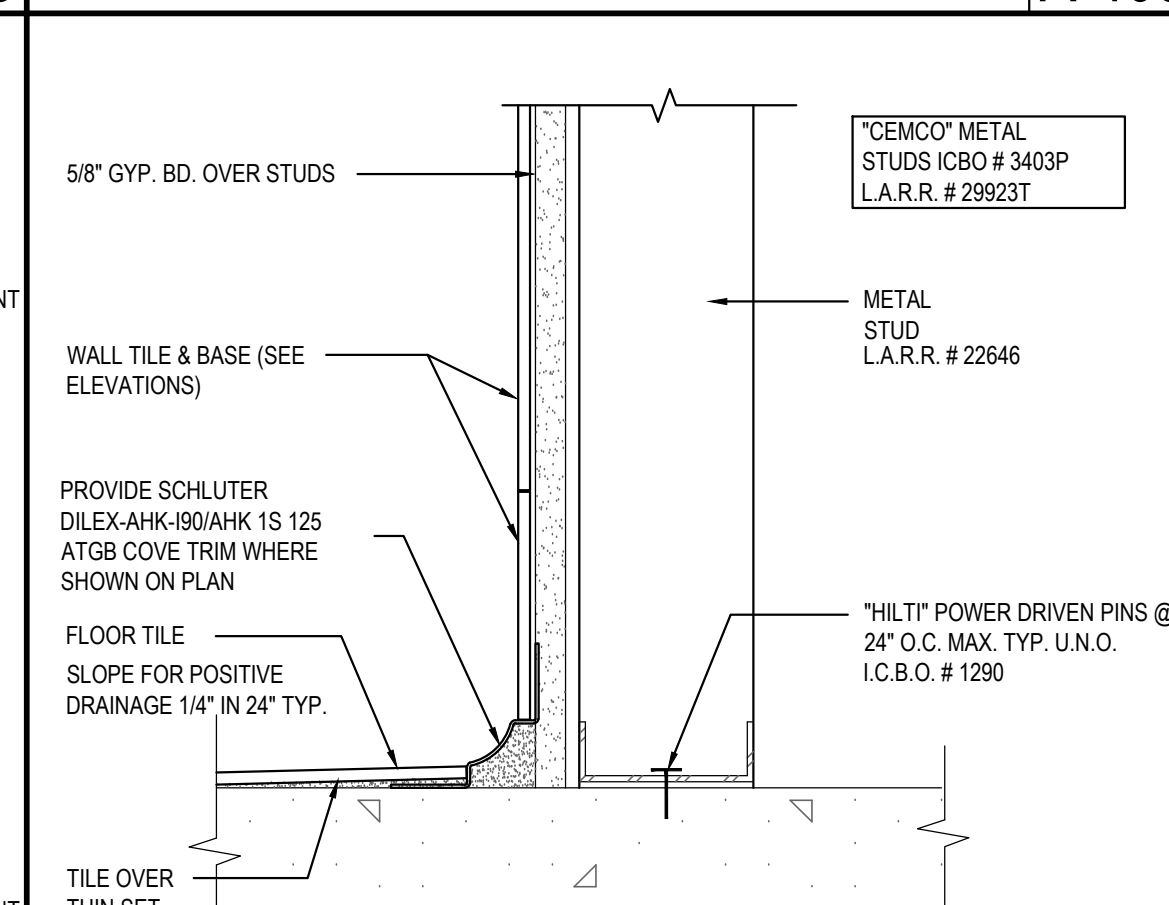
GYP. BOARD BEHIND COOKLINE 9

Scale= NTS A-403



WALK-IN COOLER BASE 5

Scale= 1/4" = 1'-0" A-403



WALL BASE @ RESTROOM 1

Scale= 3" = 1'-0" A-403



PANDA RESTAURANT GROUP INC.
1683 Walnut Grove Ave.
Rosemead, California
91770
Telephone: 626.799.9898
Facsimile: 626.372.8288

All ideas, designs, arrangement and plans indicated or represented by this drawing are the property of Panda Express Inc. and were created for use on this specific project. None of these ideas, designs, arrangements or plans may be used by or disclosed to any person, firm, or corporation without the written permission of Panda Express Inc.

REVISIONS:

ISSUE DATE:

1ST	CHECKSET	09-23-2016
2ND	PERMIT SET	09-30-2016
3RD	BID SET	12-21-2016

DRAWN BY: SHANTIA RAEESI

PANDA PROJECT #: S8-17-D5084
ARCH PROJECT #: 20160806

GreenbergFarrow

1430 West Peachtree St. NW, Suite 200
Atlanta, GA 30309
t: 404.601.4000

PROFESSIONAL SEAL

PANDA EXPRESS

SILVER BLUFF RD & PINE LOG RD
1065 PINE LOG ROAD
AIKEN, SC 29801

A-403

ARCHITECTURAL
DETAILS