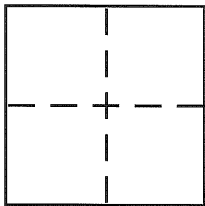


CORNER RECORDDocument Number CP 2222City of FremontCounty of Alameda, CaliforniaBrief Legal Description Lot 10, Block 4, Tract 1580, Bk. 36 Maps, P's 9-10**CORNER TYPE**

Government Corner ☐ Control ☐
 Meander ☐ Property ☒
 Rancho ☐ Other ☐
 Date of Survey July 30, 2004

COORDINATES (Optional)

N. _____
 E. _____
 Zone _____ NAD27 ☐ NAD83 ☐
 NAD83 Epoch _____
 Elev. _____
 Vert. Datum: NGVD29 ☐ NAVD88 ☐
 Meas. Units: Metric ☐ Imperial ☐

Corner – Left as found ☐ Found and tagged ☐ Established ☐ Reestablished ☒ Rebuilt ☐

Identification and type of corner found: Evidence used to identify or procedure used to establish or reestablish the corner:

Found concrete monument in standard city monument
handhole at locations shown on page 2.

A description of the physical condition of the monument as found and as set or reset:

Set nail and brass tag marked "PLS 7779" or
5/8" rebar with 1" plastic cap marked "PLS 7779" at
locations shown on page 2.

SURVEYOR'S STATEMENT

This Corner Record was prepared by me or under my direction in conformance with
 the Land Surveyor's Act on Oct. 19 2004

Signed Daniel J. Westover P.L.S. or R.C.E. No. 7779

COUNTY SURVEYOR'S STATEMENT

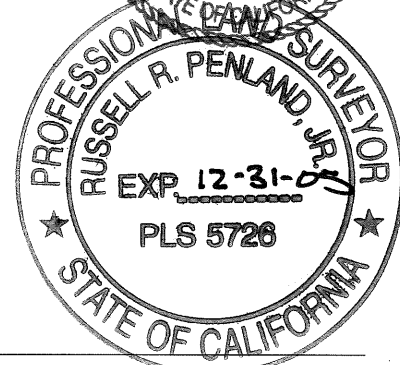
This Corner Record was received 10-25-04

and examined and filed 11-27-04

Signed Russell R. Penland P.L.S. or R.C.E. No. 5726

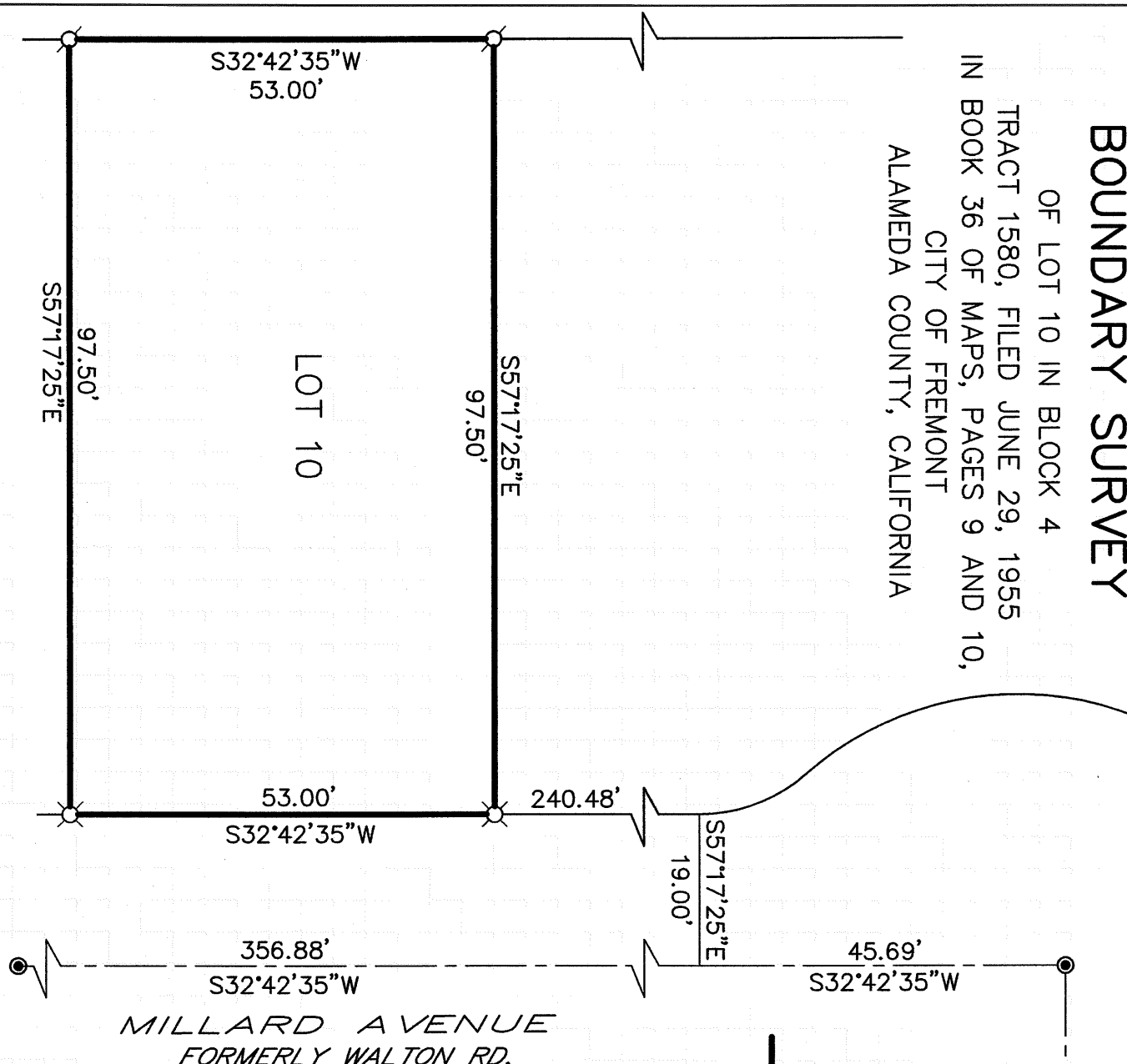
Title COUNTY SURVEYOR

County Surveyor's Comment _____



BOUNDARY SURVEY

OF LOT 10 IN BLOCK 4
TRACT 1580, FILED JUNE 29, 1955
IN BOOK 36 OF MAPS, PAGES 9 AND 10,
CITY OF FREMONT
ALAMEDA COUNTY, CALIFORNIA



SCALE: 1" = 20'

LEGEND

- RC REBAR & PLASTIC CAP
- NT NAIL & BRASS TAG
- PROPERTY LINE
- SET NT PLS 7779
- SET RC PLS 7779
- FOUND MONUMENT PER (36 M 9)

SURVEY DATE: JULY 30, 2004

TRUE NORTH
SURVEYING, INC.

4096 - 17TH STREET, #106
SAN FRANCISCO, CALIFORNIA 94114
(415) 558-9803

1343 FRANCISCO STREET,
BERKELEY, CALIFORNIA 94702
(510) 849-3676